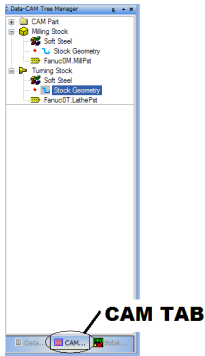
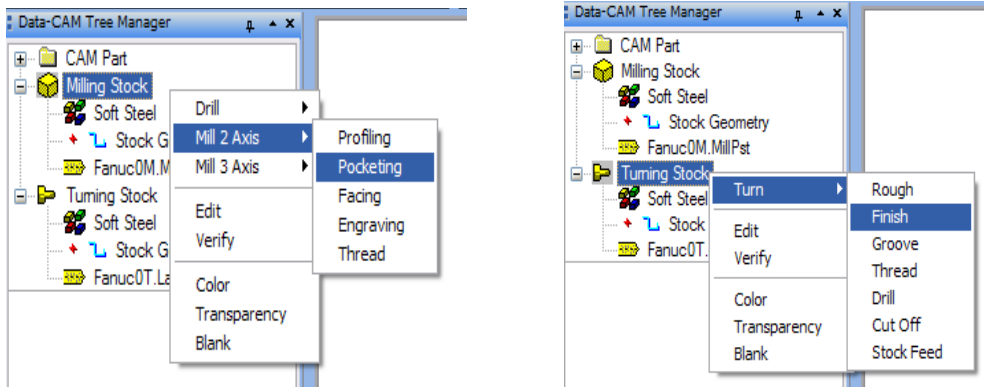


How to generate a toolpath

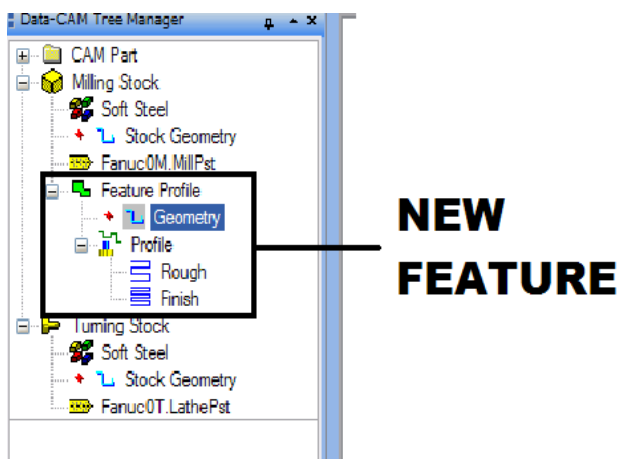
1. Left click on the **CAM** tab in the Data-CAM tree manager.



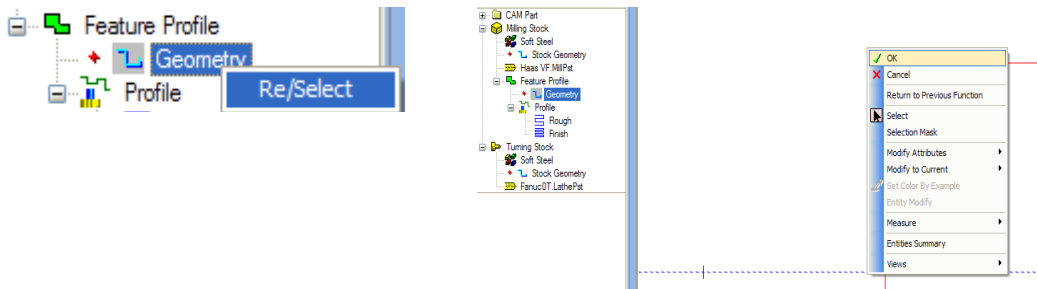
2. Right click on **Milling Stock** or **Turning Stock** this will pop-up a new menu that contains a list of tool paths.



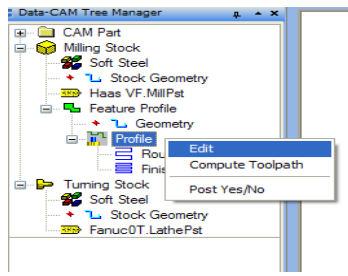
3. Left click on one of these tool paths in the this will add a new feature (tool path operation) to the tree.



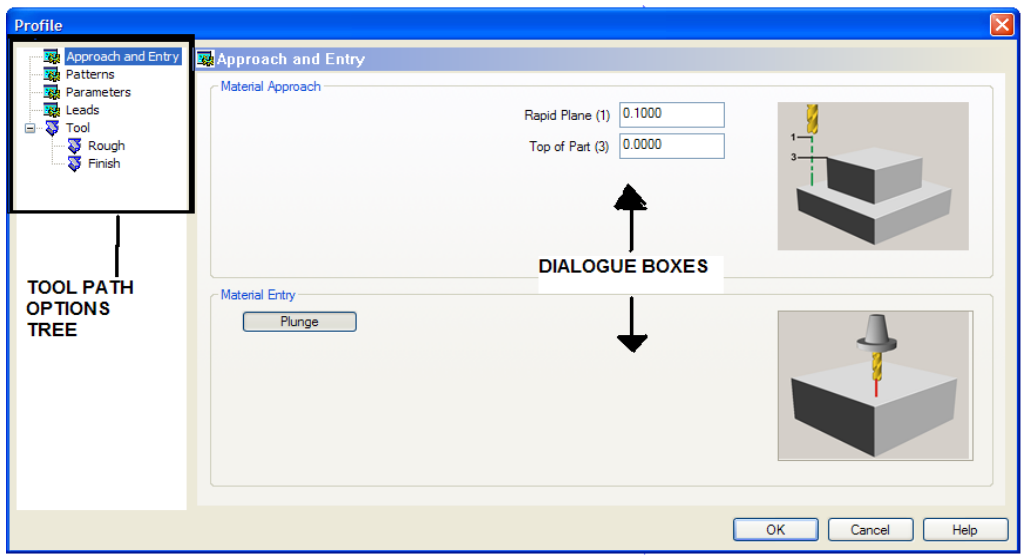
4. Right click on **Geometry** under The **Feature Toolpath** then Left Click **Re/Select** then Left Click the geometry to be cut then Right Click in the drawing screen then Left Click **OK**.



5. Right Click the toolpath name below geometry then Left Click **Edit**.



6. Click on each item in the Toolpath options tree, then fill out the options in the dialogue boxes click OK when complete.



7. Right Click the toolpath name below geometry then Left Click **Compute Toolpath**. (The new toolpath should be displayed on-screen now.)

