

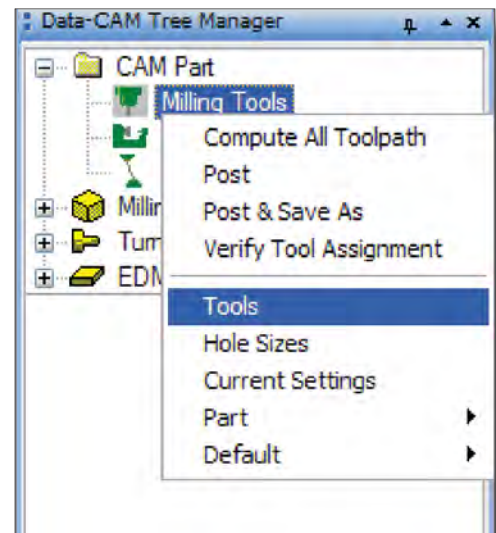
FAQ #52: How do I edit the milling tool library?

Q: I need to set up my milling tools that I have in the shop. How do I do that?

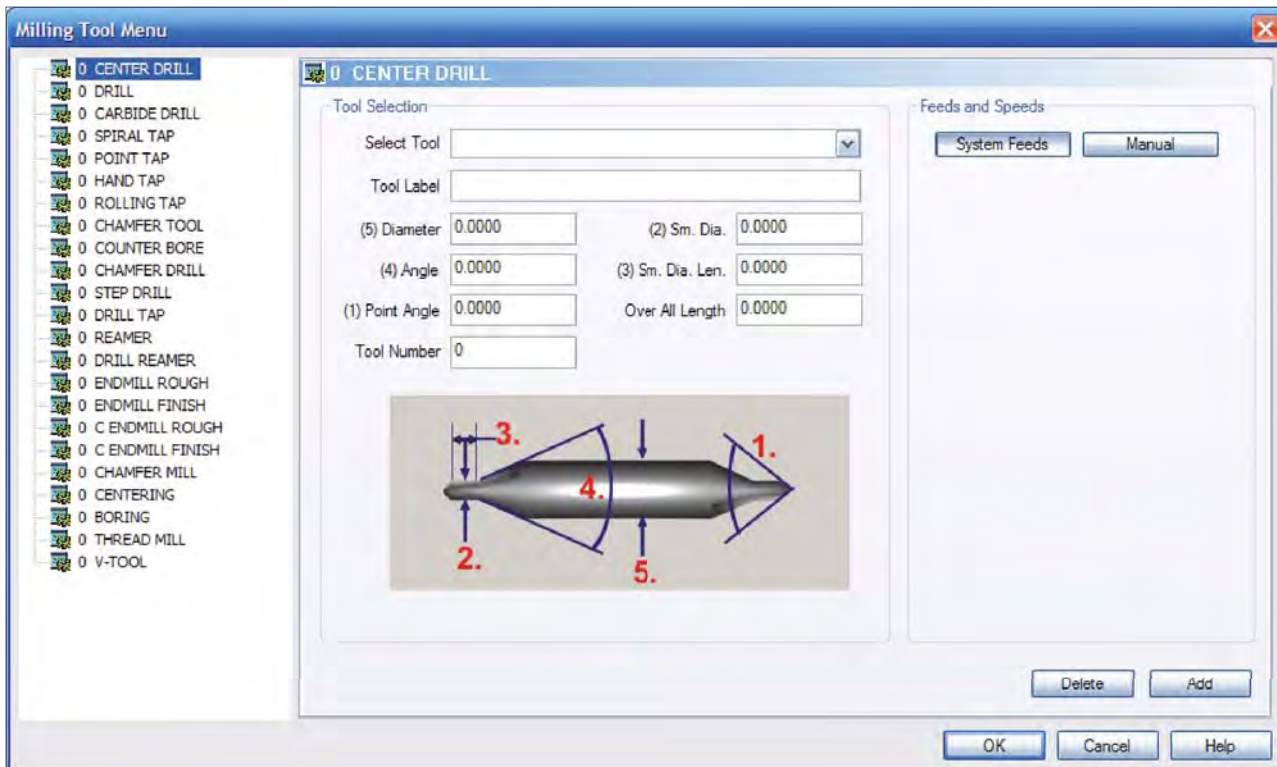
A: BobCAD-CAM permits the user to enter in tooling details by hand. To do this, follow these steps:

Adding a new tool

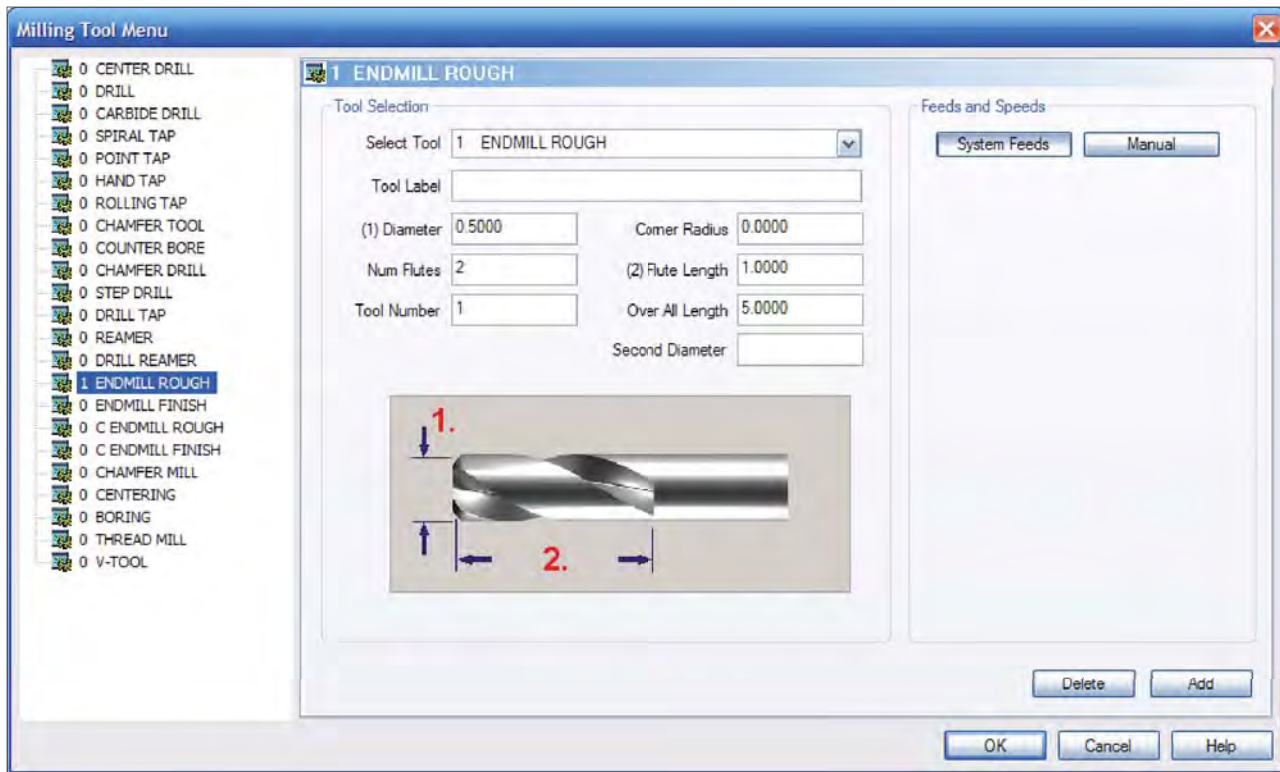
Step 1: Click on the plus icon next to **CAM Part** to expose the items underneath it. Right click on **Milling Tools** and choose **Tools** from the menu that will appear.



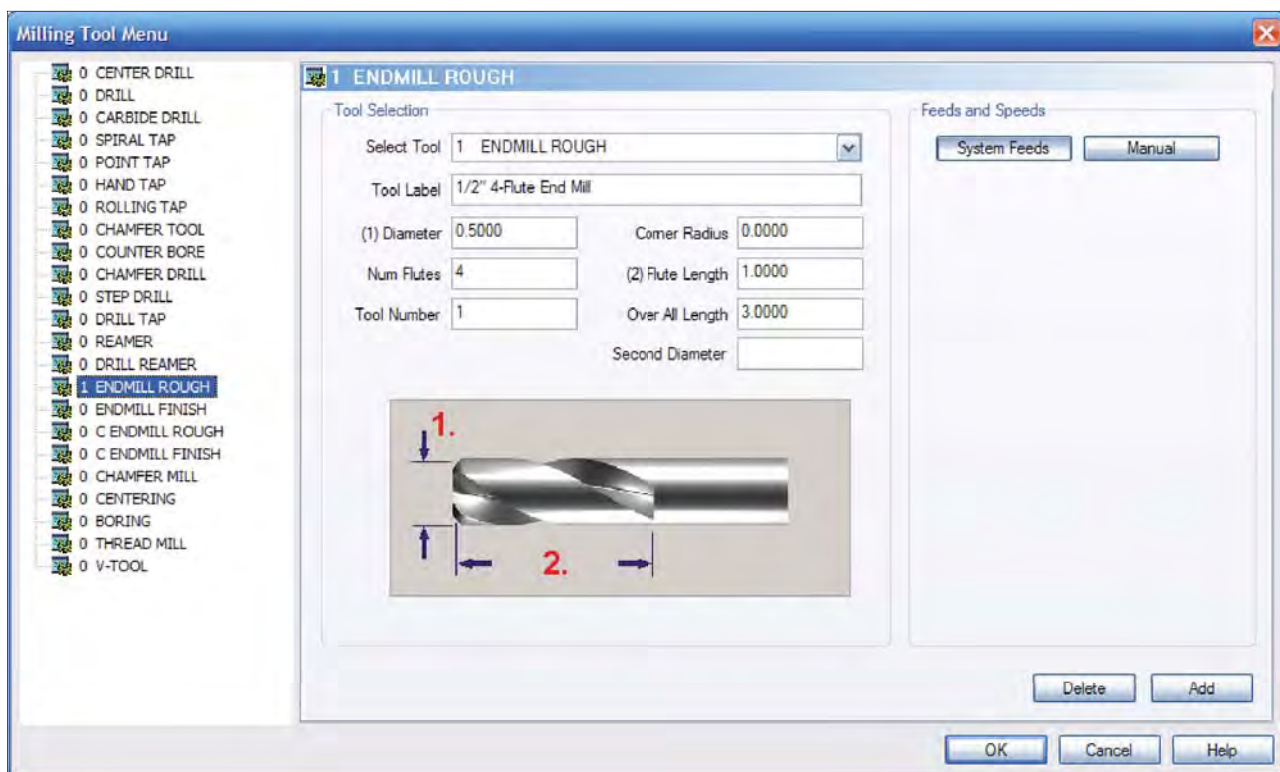
Step 2: The **Milling Tools Menu** dialog will be displayed. From here, the user may edit the library of milling tools that BobCAD-CAM has stored.



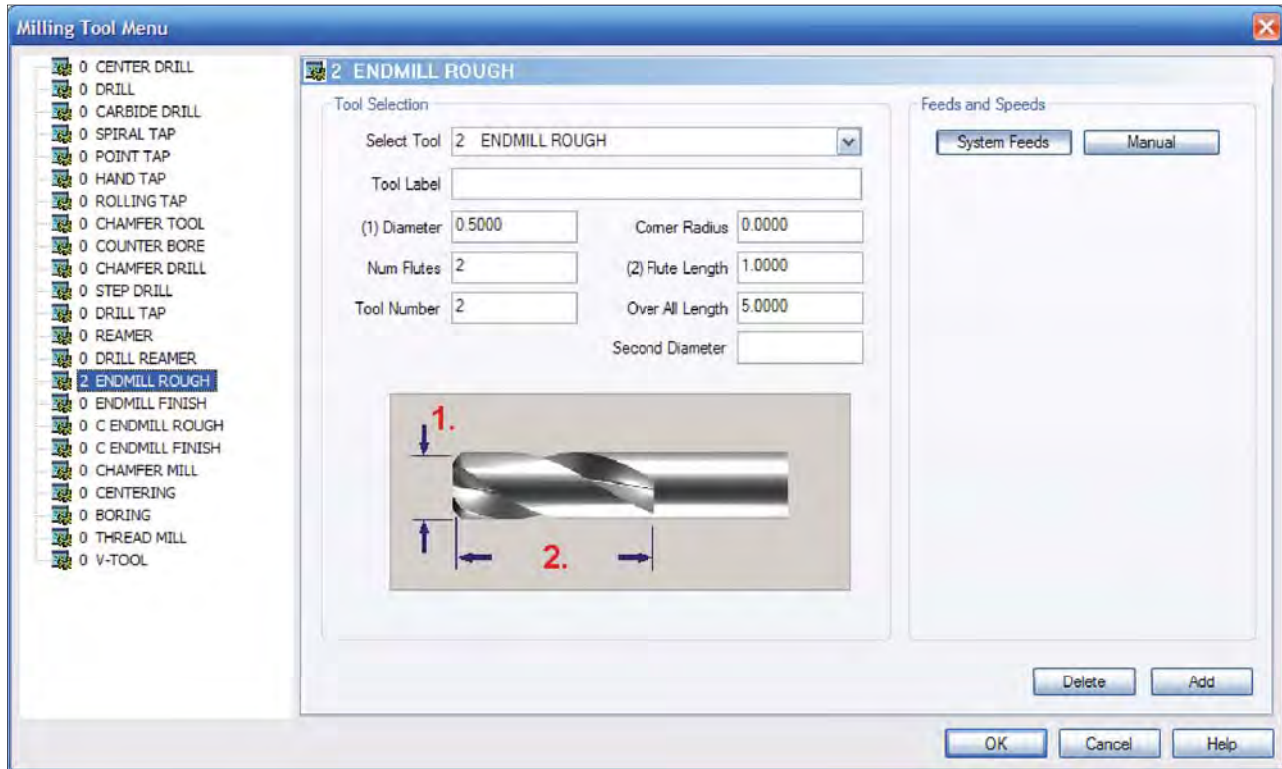
Click on the type of tool to be added to the library, then click **Add**. A default tool of that type will be added. For this example, ENDMILL ROUGH was chosen from the list.



Change the values in each field to match the desired tool. BobCAD-CAM will save the current tool's settings and add another default tool of the same type. Click **Add** again to store the new tool information in the library.



If the default tool is not required, click **Delete** and it will be removed, leaving only the edited tool changed. All undesired tools in the library can be removed in this way as well.

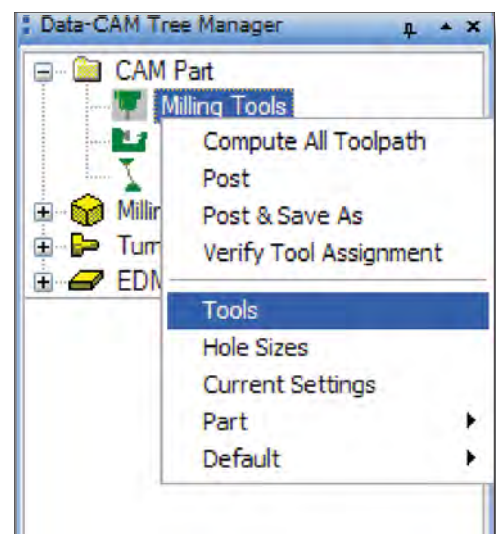


Repeat these steps for each tool to be added of each type, then click **OK** on the dialog. When BobCAD-CAM is then closed, the new tool library file will be written.

Edit an existing tool

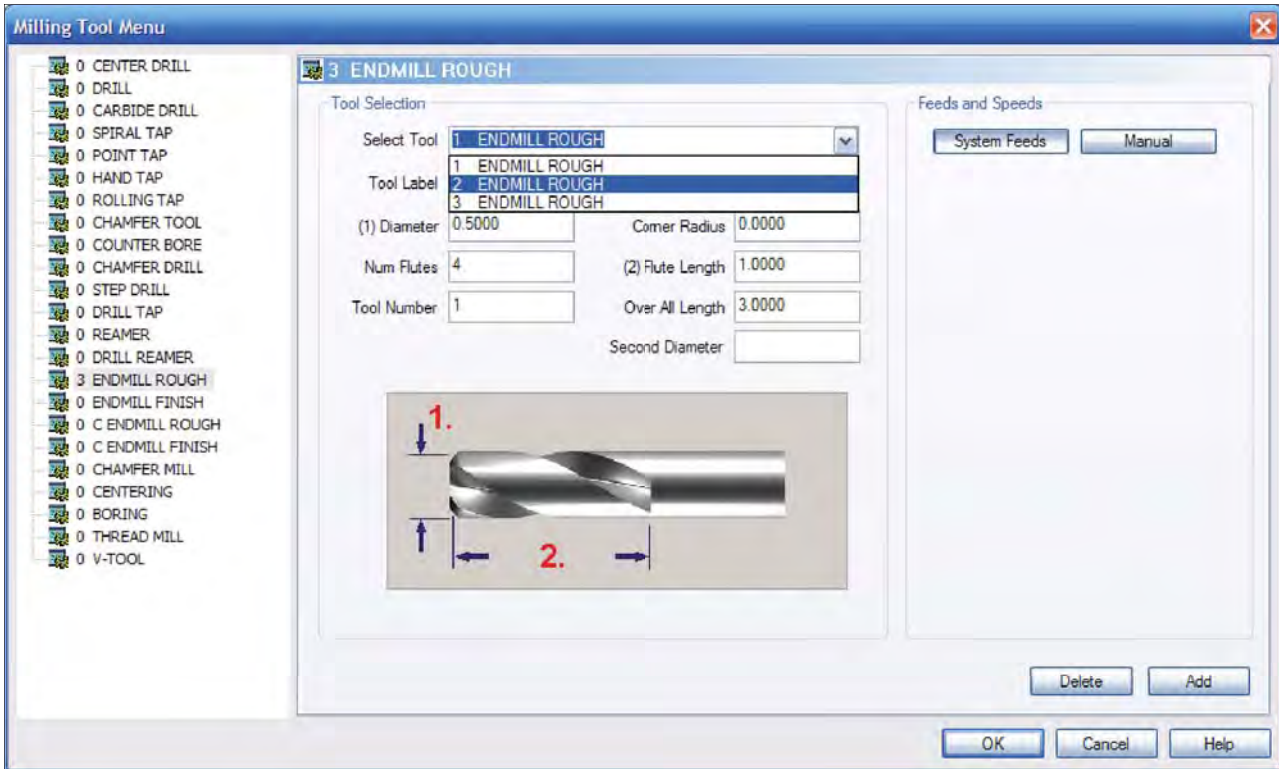
Editing a tool in the tool library is also a two-step process.

Step 1: Click on the plus icon next to **CAM Part** to expose the items underneath it. Right click on **Milling Tools** and choose **Tools** from the menu that will appear.

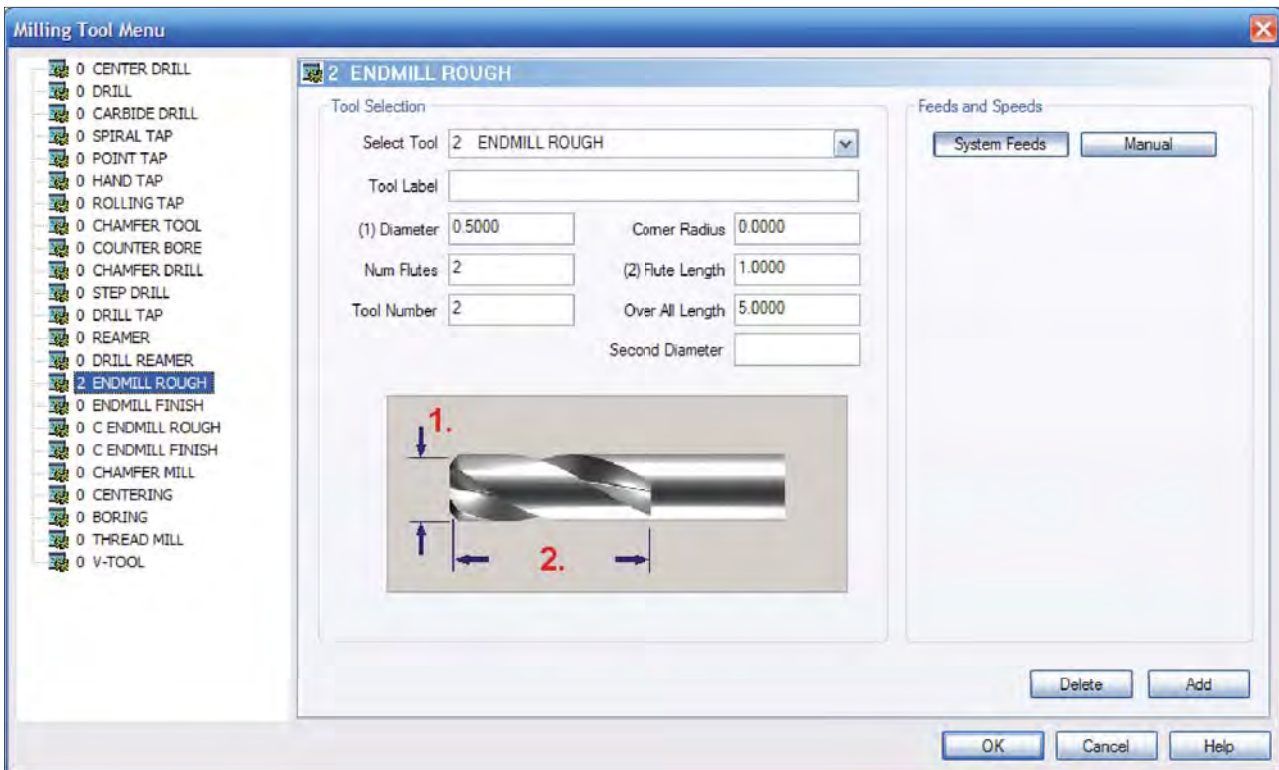


Step 2: The **Milling Tools Menu** dialog will be displayed. From here, the user may edit the library of milling tools that BobCAD-CAM has stored. In the tool list to the left, click on the type of tool to be edited.

Choose the specific tool to be edited from the **Select Tool** drop-down list.



When the correct tool has been located, edit the fields in the dialog to the new values.



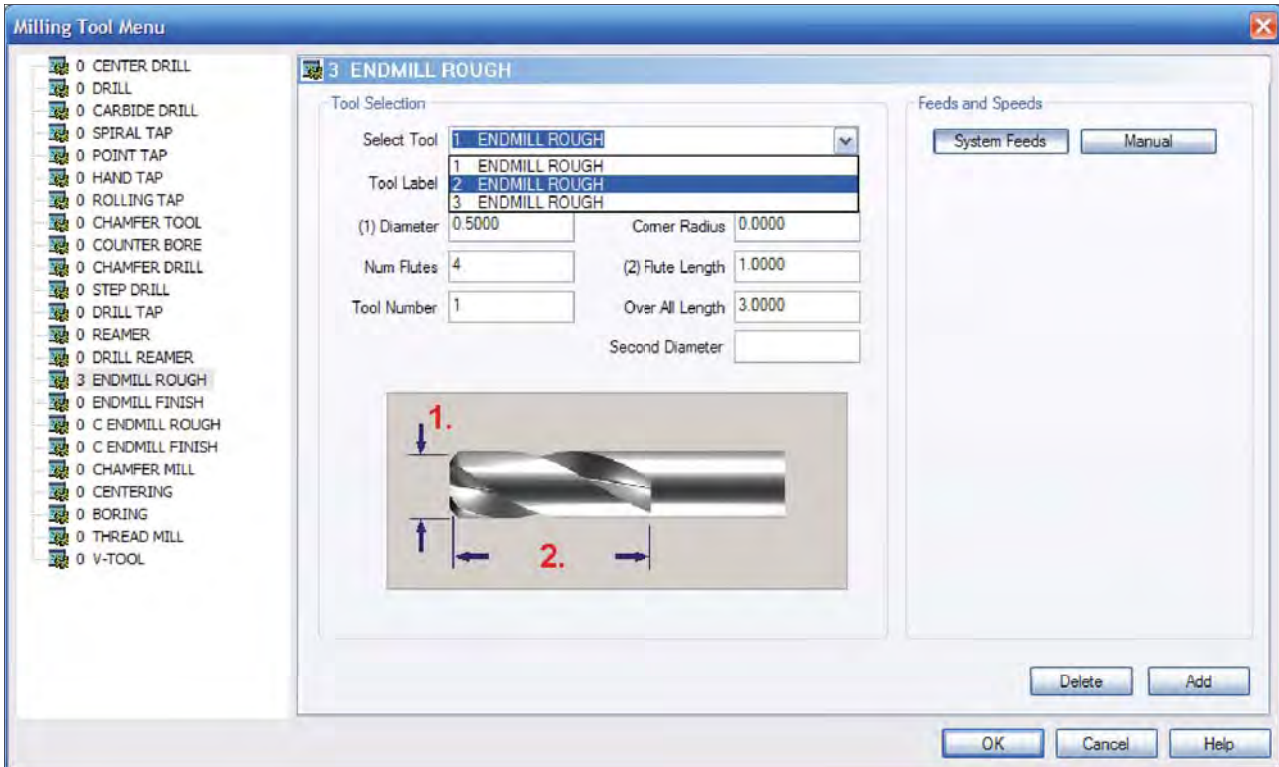
When the changes are finished, click **OK** and BobCAD-CAM will save the tool back into the library.

Deleting a milling tool

Step 1: Click on the plus icon next to **CAM Part** to expose the items underneath it. Right click on **Milling Tools** and choose **Tools** from the menu that will appear.

Step 2: The **Milling Tools Menu** dialog will be displayed. From here, the user may edit the library of milling tools that BobCAD-CAM has stored. In the tool list to the left, click on the type of tool to be edited.

Choose the specific tool to be edited from the **Select Tool** drop-down list.



When the correct tool is chosen, click **Delete** in the lower right of the box and the tool will be removed.