

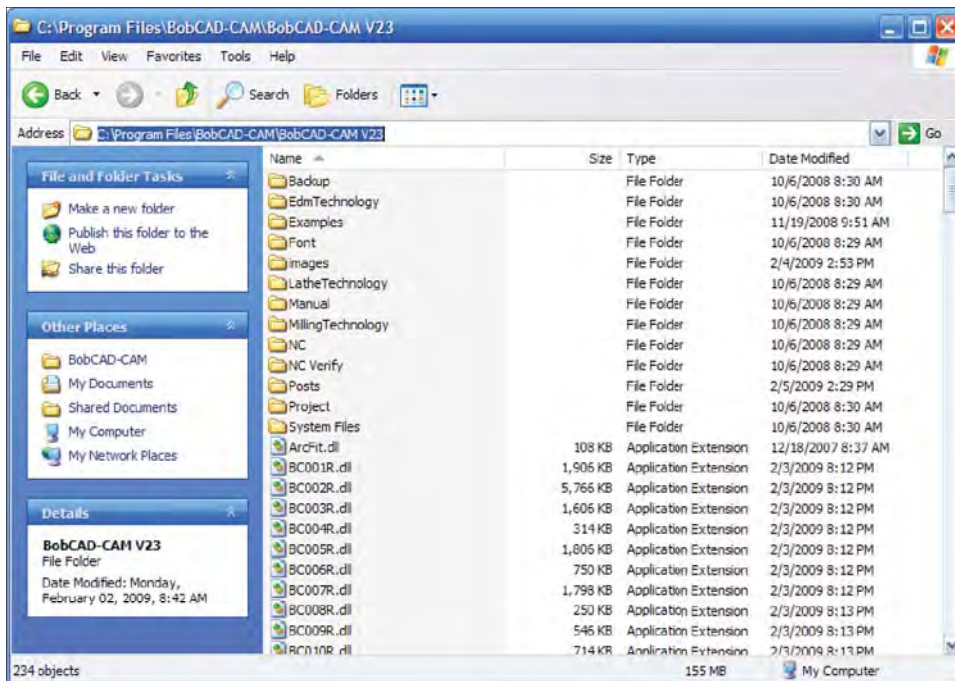


FAQ #51: How do I copy my BobCAD setup?

Q: I spent quite a while configuring BobCAD-CAM on one of my computers. How can I copy the configuration I did to another computer so I don't have to spend all that time again?

A: All of BobCAD-CAM's setup information is automatically saved to a set of files. Copying these files from one computer to another is all that's required to copy all of the machine setups, tool information, cutting conditions, etc. Before following these instructions, be sure that BobCAD-CAM is not currently running on either computer.

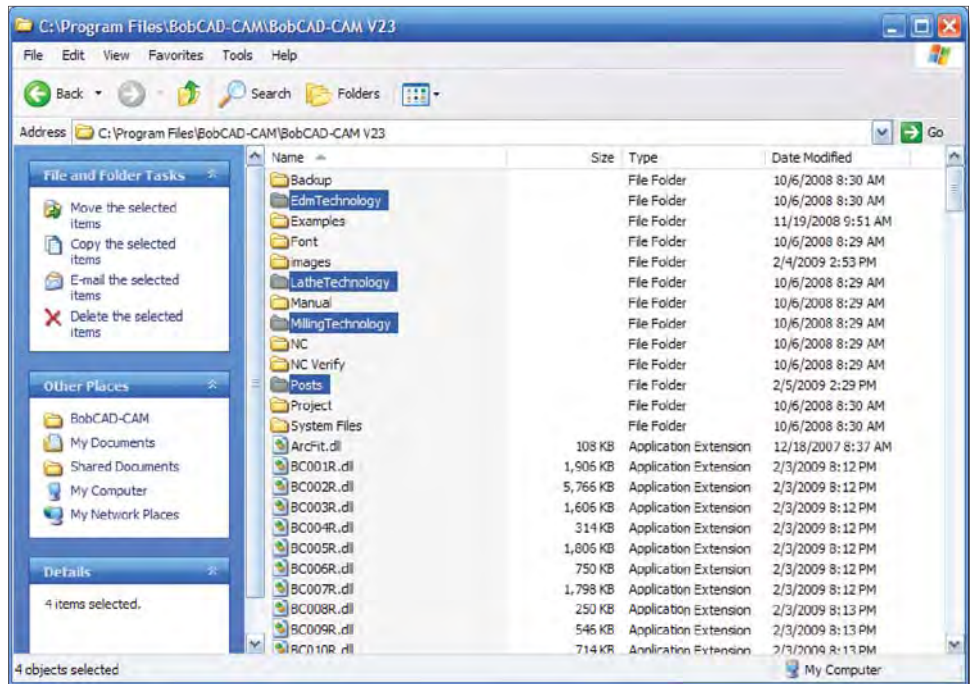
Step 1: Navigate to C:\Program Files\BobCAD-CAM\BobCAD-CAM V23\. This is the default folder that BobCAD-CAM V23 will be installed into on 32-bit Windows system. On 64-bit Vista systems, it will be C:\Program Files (x86)\BobCAD-CAM\BobCAD-CAM V23\. If the software has been installed elsewhere, navigate to that folder instead.



Step 2: Once inside that folder, hold down the Ctrl key on the keyboard and click on each of these folders to highlight them:

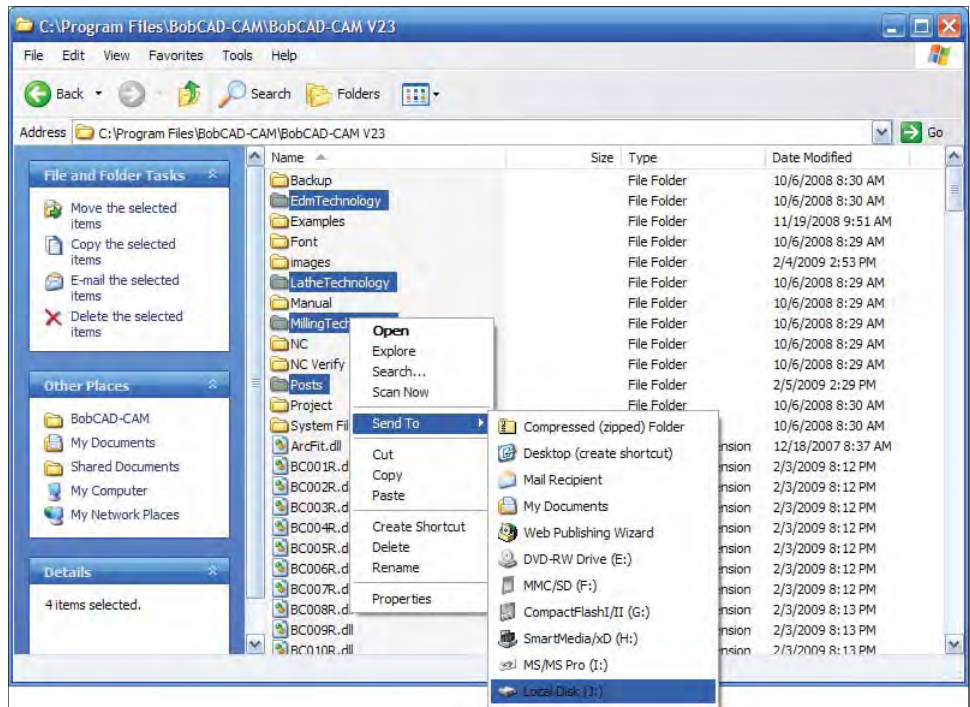
MillingTechnology
LatheTechnology
EdmTechnology
Posts

When they are all highlighted, there are several ways to copy them. Whichever way this is done, the files will need to be on another media to take to the next computer, be it a network drive, a direct copy through a shared folder, or a USB drive. The method described here is the USB drive method.



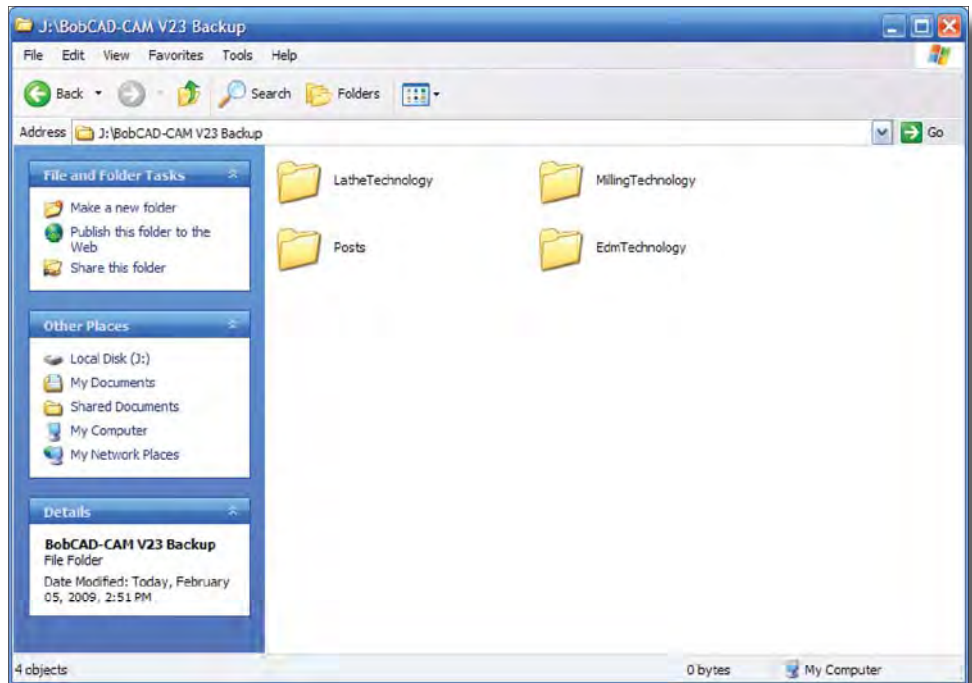
Right click on one of the highlighted folders and hover the mouse cursor over the **Send To** item in the menu that will appear.

In the fly-out menu, pick the media to copy the folders to. In this case, it is the “J:” drive, a USB external hard drive.



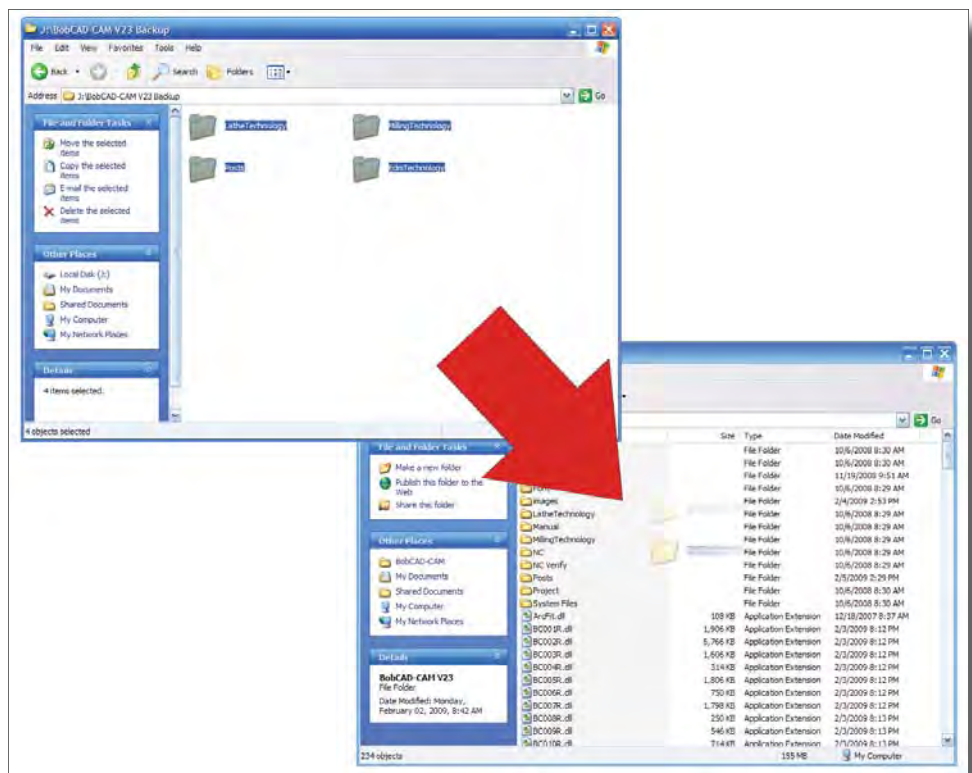
Step 3: Once the folders have completed copying, remove the drive and take it to the next computer.

Often, Windows will “Autoplay” the drive and display its contents. Whether it does or not, open the driver through *My Computer* (just *Computer* on Vista systems).

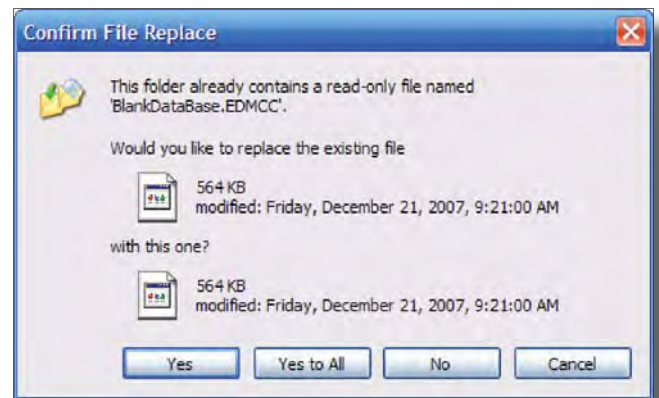
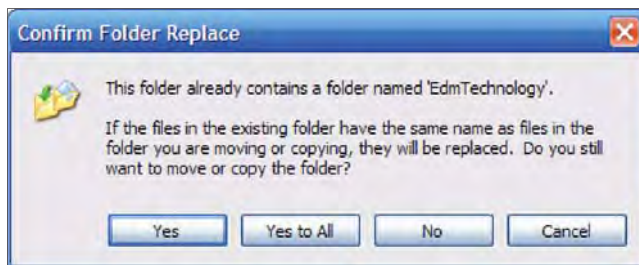


When the contents of the drive are displayed, open the BobCAD-CAM installation folder on the second computer.

Highlight the folders and drag them into the BobCAD-CAM folder and Windows will begin copying them.



During the copy operation, Windows may display notices similar to the ones shown here. If it does, be sure to select Yes to All in order to overwrite the files that are already there.



Step 4: Start BobCAD on the new computer and verify that the machine and tool settings carried over properly. To update several seats on several computers, simply perform these steps again.