

FAQ #41: How do I make HTML Setup Sheets Work?

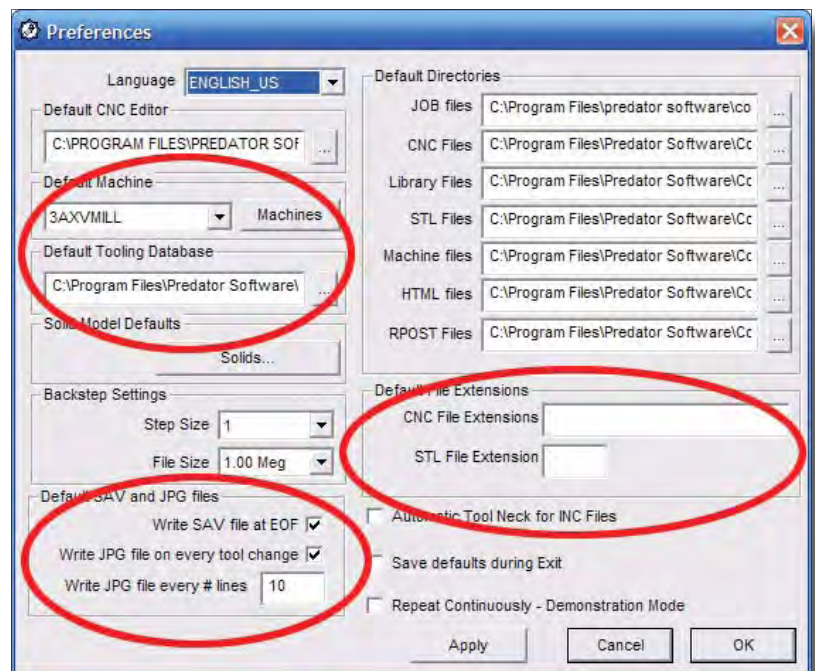
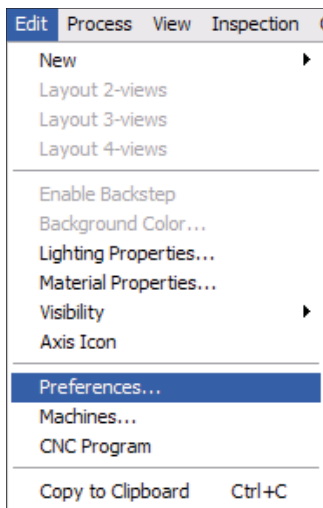
Q: I have the Predator Virtual CNC Level 3, but I can't seem to make the HTML setup sheets work properly. How do I do this?

A: There are a few steps necessary the first time it's done in order to set them up, but they only need to be run through once and the setup sheets will work properly from then on.

Step 1: Double click on the Predator Virtual CNC 2007 for BobCAD icon on the computer's desktop to launch Virtual CNC without any files loaded.



When the program opens, click on **Edit** in the main menu and choose **Preferences**.

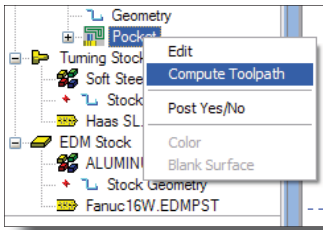


Click on the drop-down list under **Default Machine** and choose the machine setting that will most commonly be used. Normally, this will be either **3AXVMILL** (3-Axis Vertical Mill) or **4AXVMILL** (4-Axis Vertical Mill).

Under **Default Tooling Database**, click on the browse button (marked "...") and navigate to C:\Program Files\ Predator Software\Common Files\Tools and choose AllTools.dat if this field isn't already filled.

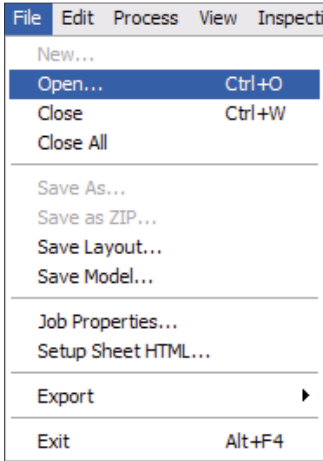
Under **Default SAV and JPG files**, check both boxes and put "10" under **Write JPG file every # lines** as shown here. If there are any file extensions listed under **Default File Extensions**, empty them out. Click **OK** in the dialog box. A message should appear announcing that the preferences have been saved. Click **OK** on that box and close Virtual CNC.

Step 2: Open BobCAD-CAM V23 and either open a file with computed toolpath, or create something simple.

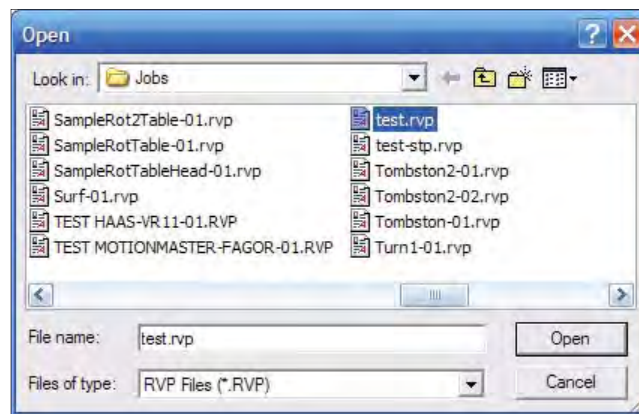
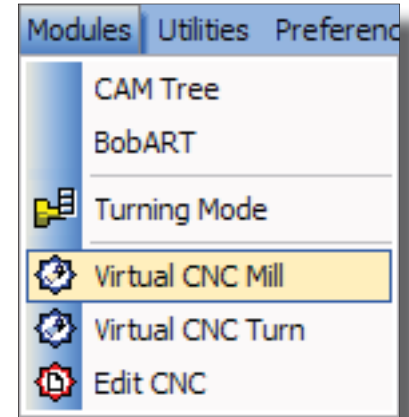


Be sure to compute the toolpath before continuing further.

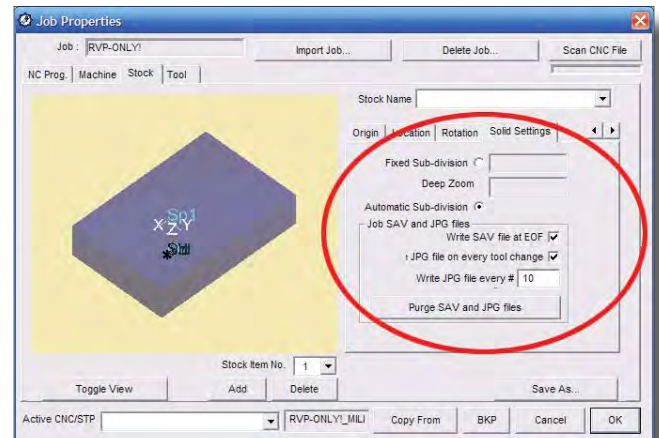
Open Virtual CNC again from inside BobCAD-CAM V23. Click on Modules in the main menu and choose Virtual CNC Mill.



Once back in Virtual CNC, Click on File in the main menu and choose Open. From the dialog that will appear, choose the .rvp file that matches the name of the file that's loaded into BobCAD-CAM.

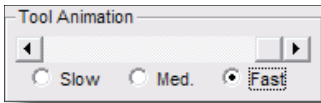


Once the file is loaded, the **Job Properties** box will automatically display. In the **Stock** tab, choose the **Solid Settings** tab on the right as shown. Check the two boxes under **Job SAV and JPG files** and enter "10" in the box labeled **Write JPG file every #** to match what was set in **Preferences** in the previous step.



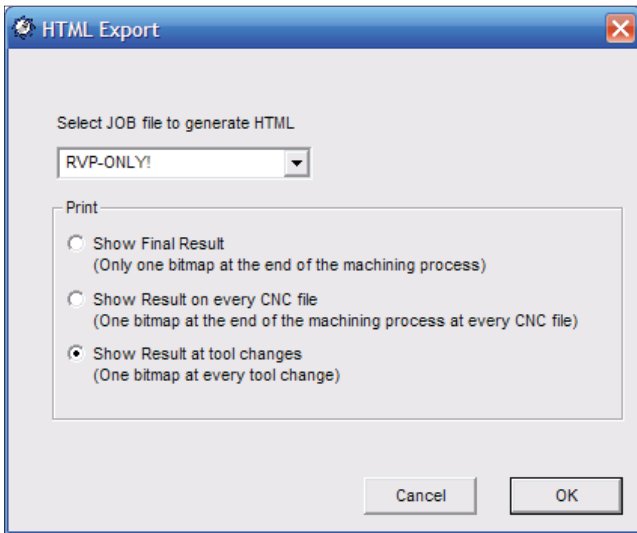
Click the **Purge SAV and JPG files** button and click **OK** on this box.

Step 3: Click on the **Run** button on the toolbar to simulate the toolpath.

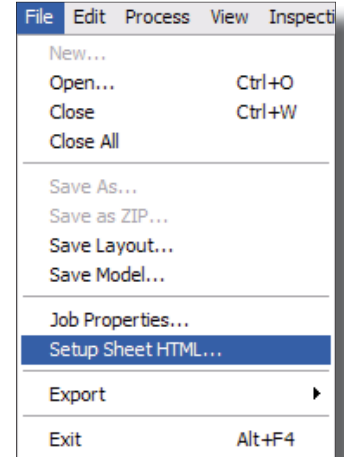


If the simulation is slow, set the speed to **Fast** near the bottom of the screen to complete the simulation more quickly. Even on **Fast**, the simulation may take a while to complete.

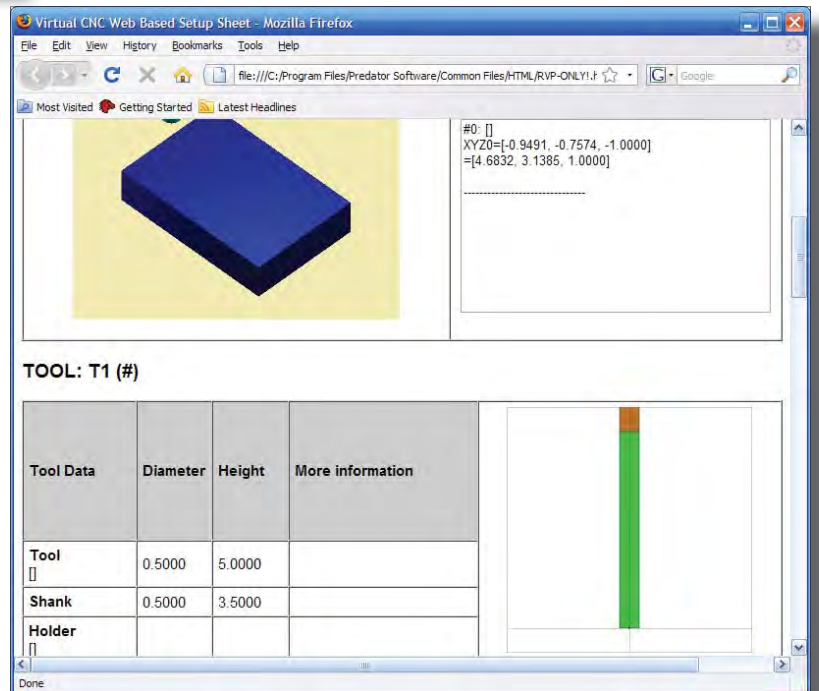
Once the simulation has finished, click on **File** in the main menu and choose **Setup Sheet HTML**.



In the dialog that will appear, choose one of the **Print** options and click **OK**.



Virtual CNC will display the setup sheet once it has completed generating it.



To generate the setup sheets after the first time, simply repeat **Step 3** after computing toolpath in BobCAD-AM!