



# BobCAD-CAM

## FAQ #35: How do I add new taps to my library?

**Q:** I need to add or edit some taps to the library that I have in the shop but aren't already in BobCAD-CAM. How do I do this?

**A:** Different size and type taps may be added to Taps folders for selection within BobCAD-CAM. They are simple text (.txt) files which may be edited using Notepad or any other text editing program. The instructions for both Versions 22 and 23 are the same, but the folders in which the files can be found are different. The files reside in the following locations:

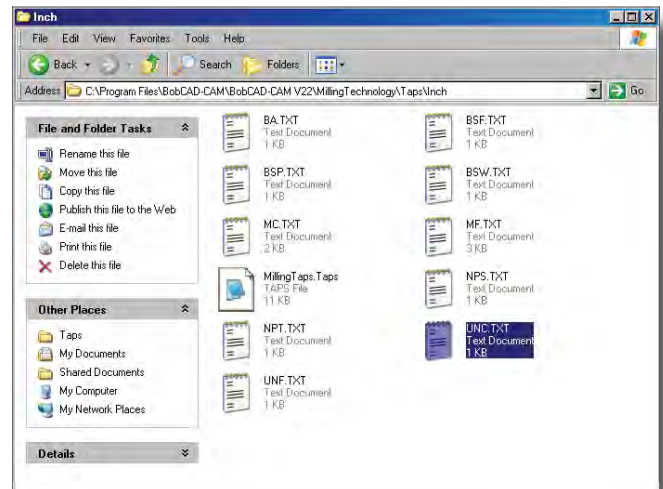
C:\Program Files\BobCAD-CAM\BobCAD-CAM V22\MillingTechnology\Taps

C:\Program Files\BobCAD-CAM\BobCAD-CAM V23\MillingTechnology\Taps

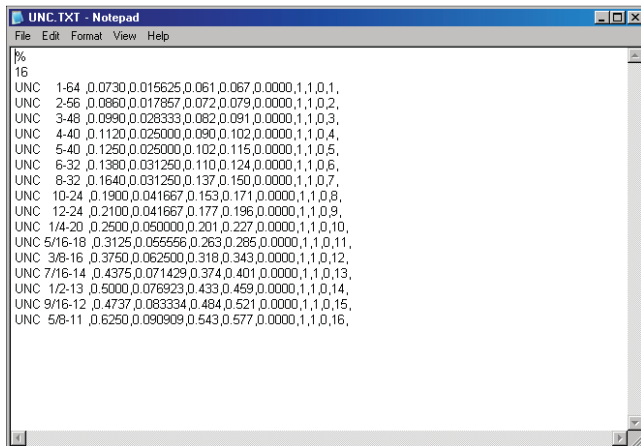
**Step 1:** With BobCAD-CAM closed, navigate to and open the taps folder.

Delete the MillingTaps.Taps file. It will automatically be regenerated upon software launch.

**NOTE:** It is recommended to make a copy of the file in the event of any errors while editing.



**Step 2:** Open the desired text file (.txt) for the corresponding style of tap.



The first line may ONLY contain the percent symbols. The second line will reflect the total number of taps within the file. This value will be index number of the last sequentially listed tap. Note that in the illustration to the left both of these numbers are 16.

Follow the format *exactly* and list taps according to nominal diameter for ease of selection.

**Step 3:** After the changes have been made, save the file. Once saved, open BobCAD-CAM. The program will automatically regenerate a new MillingTaps.Taps file with the changes made.

See below for a description of the line format of each tap in the list:

UNC 1/4-20 ,0.2500,0.050000,0.201,0.227,0.0000,1,1,0,10,

UNC	1/4-20	0.2500	0.050000	0.201	0.227	0.0000	1	1	0	10
Tap Type (This will be displayed)	Tap Label (This will be displayed)	Nominal Diameter	Pitch	Drill Size	Drill Size for a Rolled Tap	Drill Size for a STI (Spiral Insert) Tap	Units Mode (1=inch - 2=mm)	Always 1	Machine Type (0 = Mill)	Index Number