

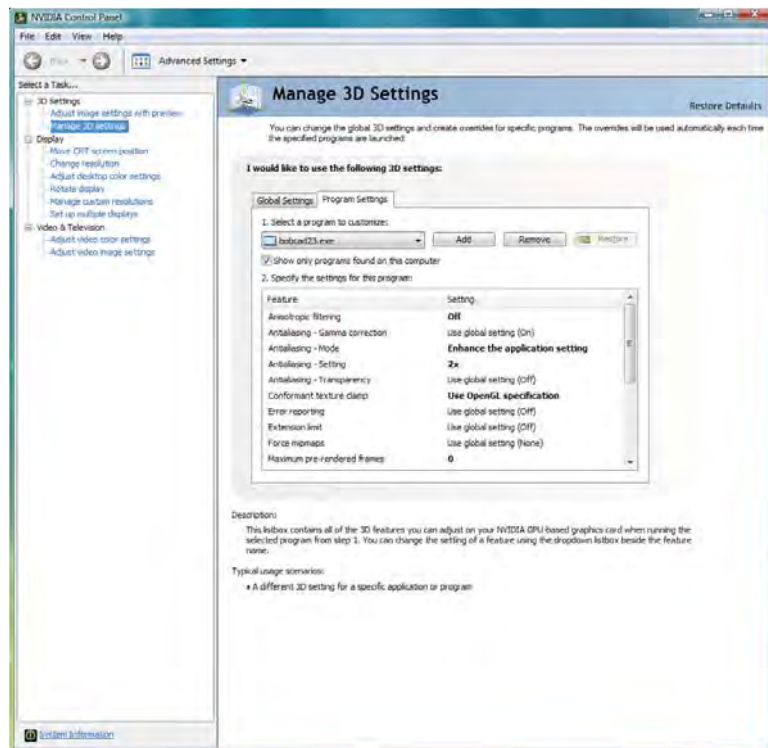
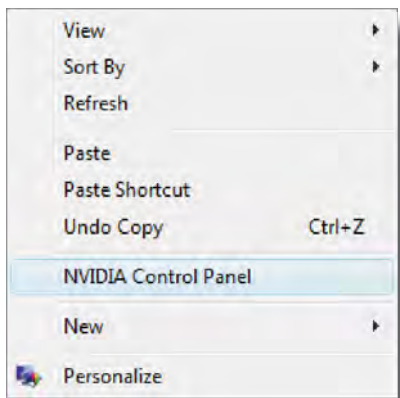
## FAQ #31: Using NVIDIA GeForce 8/9 in Vista

**Q:** BobCAD keeps crashing when I highlight something. I have Windows Vista and an NVIDIA GeForce 8000 or 9000 series graphics card.

**A:** There is a collection of settings in NVIDIA's control panel that enable these cards to work well with BobCAD-CAM.

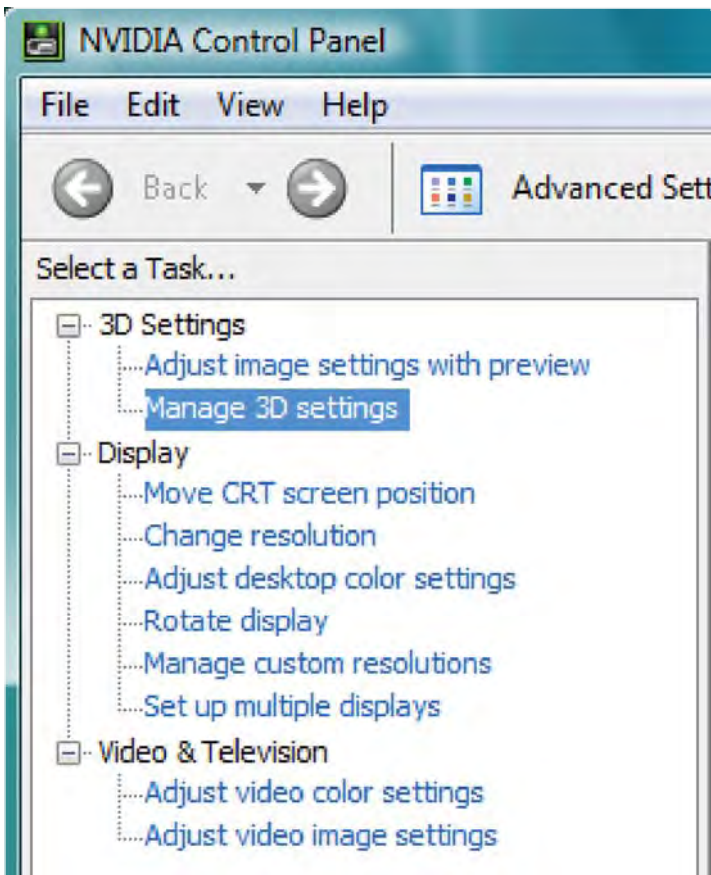
The following settings will need to be applied to ensure stable performance from the BobCAD-CAM software when using an Nvidia GeForce 8000/9000 series graphics card on a Vista platform. These settings can be applied using the NVIDIA Control Panel. If BobCAD-CAM is running, shut it down before applying these steps.

**Step 1:** Access the NVIDIA Control Panel. To do this, right click on the Desktop and choose **NVIDIA Control Panel** from the menu. The **NVIDIA Control Panel** dialog will appear.



**Step 2:** Adjust the settings for the BobCAD-CAM software.

In the column on the left side of the dialog, click on **Manage 3D Settings** under **3D Settings** in the tree.

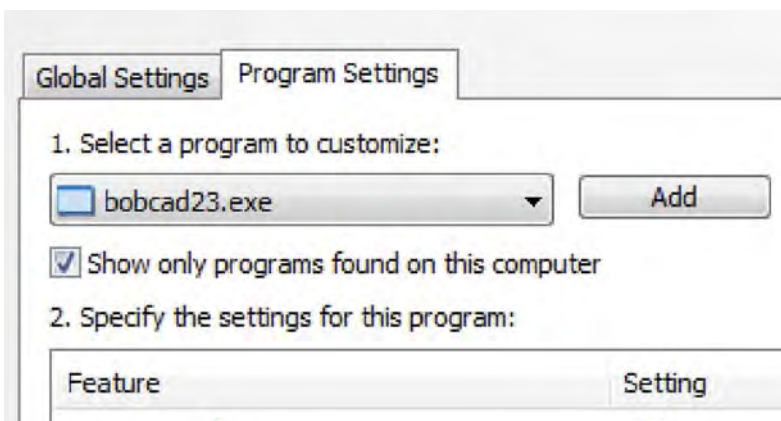


In the main window, click on the **Program Settings** tab.

Click the **Add** button next to **Select a program to customize**:

Navigate to your BobCAD directory and select the executable file for your software. The file path for BobCAD-CAM V22 is usually "C:\Program Files\BobCAD-CAM\BobCAD-CAM V22" and for V23 it is normally "C:\Program Files\BobCAD-CAM\BobCAD-CAM V23". If the software were installed to a custom location, navigate to the installation folder chosen at install time.

Click on the .exe file for the software (Version 22 users will select BobCAD.exe and Version 23 users will select BobCAD23.exe). This step ensures that these settings are only applied to the BobCAD-CAM software and will not alter any other programs which may be installed.



**Step 3:** Under **Specify the settings for this program:** please alter your settings to match the settings listed below. The settings listed in bold should be the only ones that will need altered:

<b>Feature</b>	<b>Setting</b>
<b>Anisotropic filtering</b>	<b>Off</b>
Antialiasing – Gamma correction	Use global setting (On)
<b>Antialiasing – Mode</b>	<b>Enhance the application setting</b>
<b>Antialiasing – Setting</b>	<b>2x</b>
Antialiasing – Transparency	Use global setting (Off)
<b>Conformant texture clamp</b>	<b>Use OpenGL specification</b>
Error reporting	Use global setting (Off)
Extension limit	Use global setting (Off)
Force mipmaps	Use global setting (None)
<b>Maximum pre-rendered frames</b>	<b>0</b>
<b>Multi-display/mixed-GPU acceleration</b>	<b>Compatibility performance mode</b>
<b>Texture filtering – Anisotropic sample optimizat...</b>	<b>On</b>
<b>Texture filtering – Negative LOD bias</b>	<b>Allow</b>
Texture filtering – Quality	Use global setting (Quality)
Texture filtering – Trilinear optimization	Use global setting (Off)
Threaded optimization	Use global setting (Auto)
Triple buffering	Use global setting (Off)
Texture filtering – Anisotropic mip filter opt...	Off
Vertical sync	Use global setting (Use the 3D application...)

If on a laptop, also switch **Threaded optimization** to **On**, and the **Antialiasing - Gamma Correction** to **Off**.

**Step 4:** Click **Apply** in the bottom left hand corner of the **NVIDIA Control Panel**. The settings will be applied to BobCAD-CAM only. Restart BobCAD-CAM if it is running and the new settings will take effect.

If any other issues present themselves after following the steps provided, please contact Technical Support at 727-489-0003.