

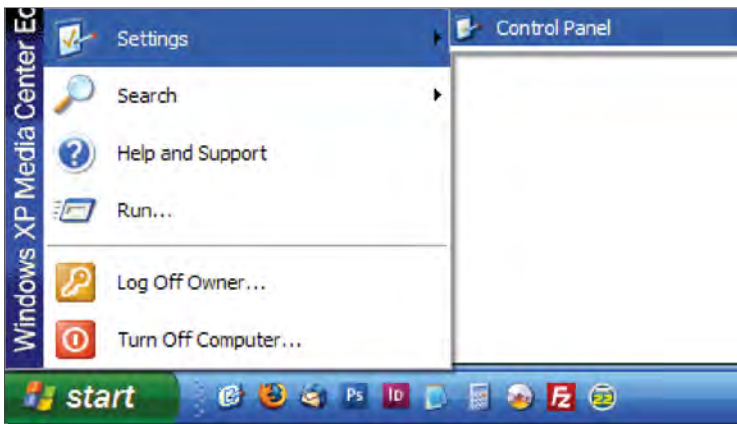
FAQ #29: Updating the Predator for Lathe in V22

Q: The built-in simulator in my BobCAD-CAM V22 won't simulate lathe programs in 3D. How do I fix that?

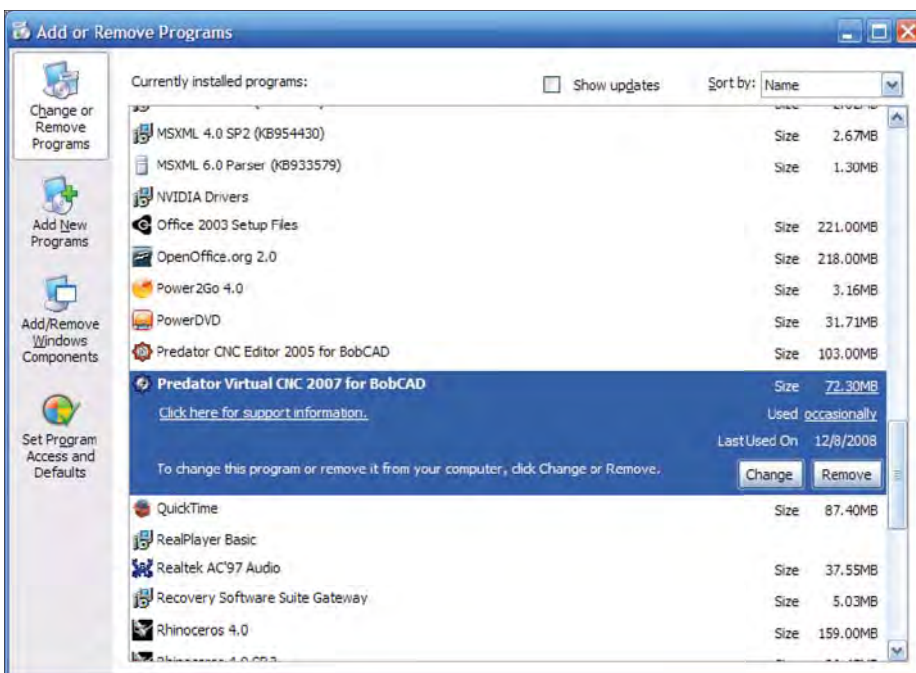
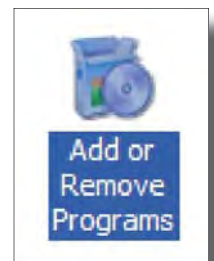
A: We've released an update to the Predator Virtual CNC for BobCAD-CAM to correct that. The following are the steps to install it:

Step1: Since the version number did not increment, the first step is to uninstall the old version of Virtual CNC.

From the Start menu, choose Settings and then Control Panel.

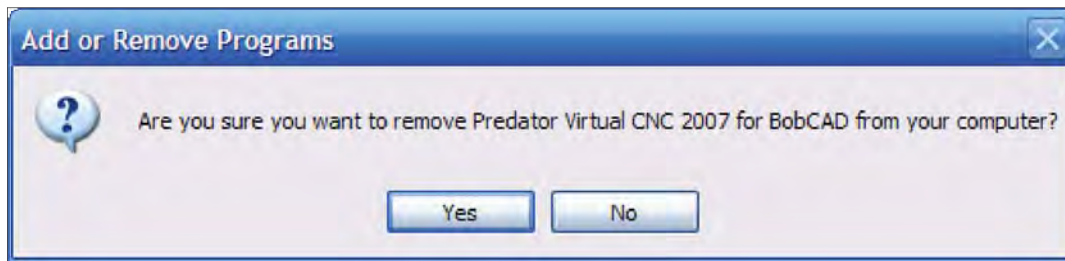


When the Control Panel window appears, double-click on Add or Remove Programs.

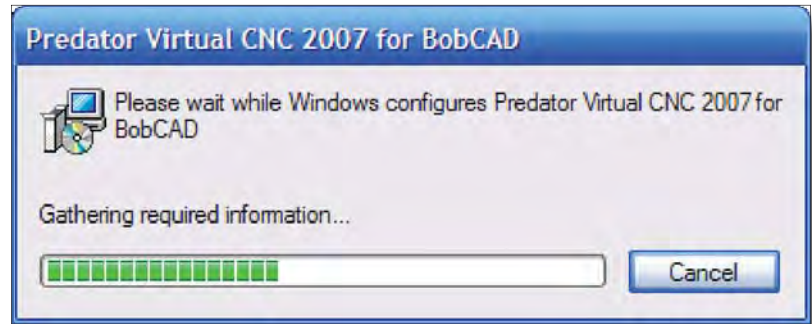


When the Add or Remove Programs window appears, choose Predator Virtual CNC 2007 for BobCAD and click on the Remove button.

A box will be displayed asking if it should really be removed. Click **Yes**.



A box will display the progress. When it is completely removed, close all the open windows and Step 1 will be complete.



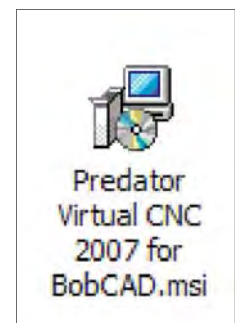
Step 2: Install the updated the software.

Navigate with a web browser to <http://www.bobcadsupport.com/tech>. Click on **Predator Lathe Verify Fix V22**. When the page loads, download the *Predator Virtual CNC 2007 for BobCAD.msi* file.

Save the file to the Desktop or anywhere that will be easily accessible.

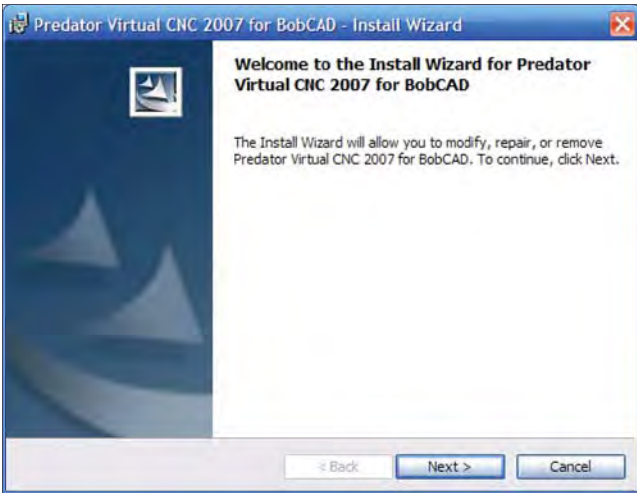


Double-click on the icon to run the installer.



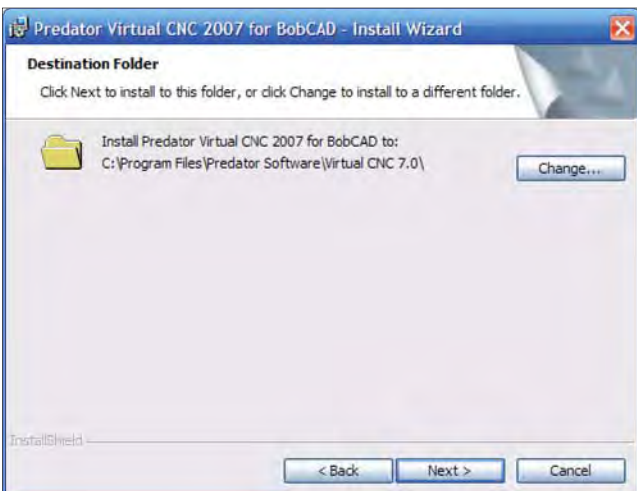
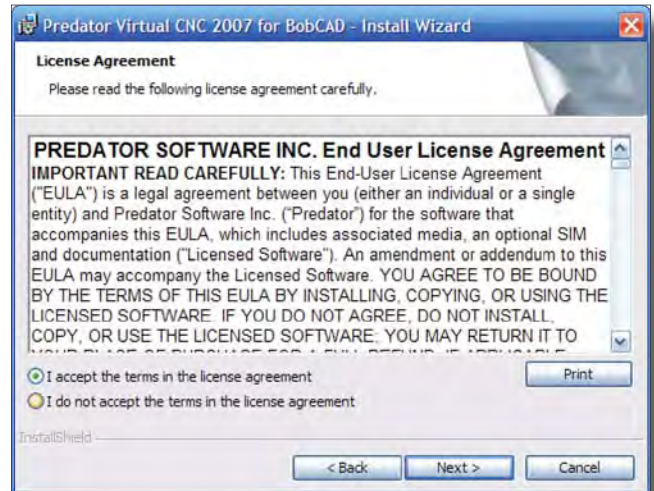
A box may appear stating that the publisher of the software could not be verified. The installer is not digitally signed, so this is to be expected. Click on **Run**.



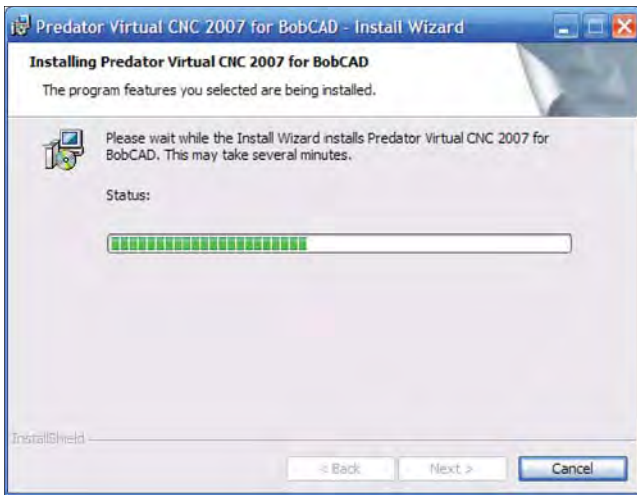


The installer will start. Click **Next**.

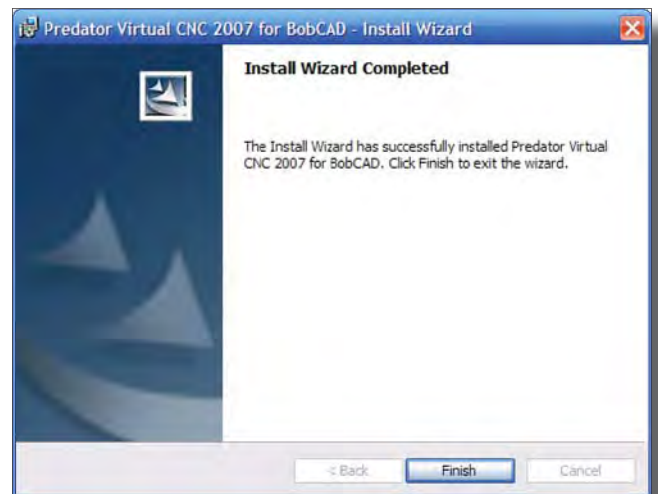
When the License Agreement appears, read through it and then click on the Accept option button. The software will not install if the license agreement is not accepted. Click **Next**.



At the next box, it will display the default location to install to. In the next step, the files will actually be copied to a different location, so the default location will be ok. Click **Next**.

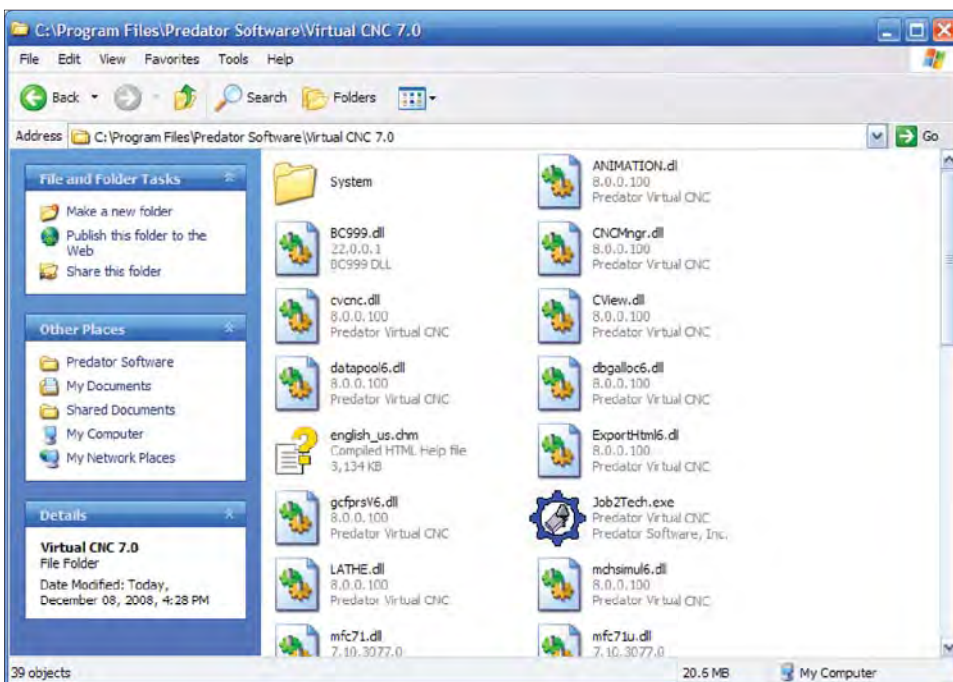


The installation progress dialog will show.

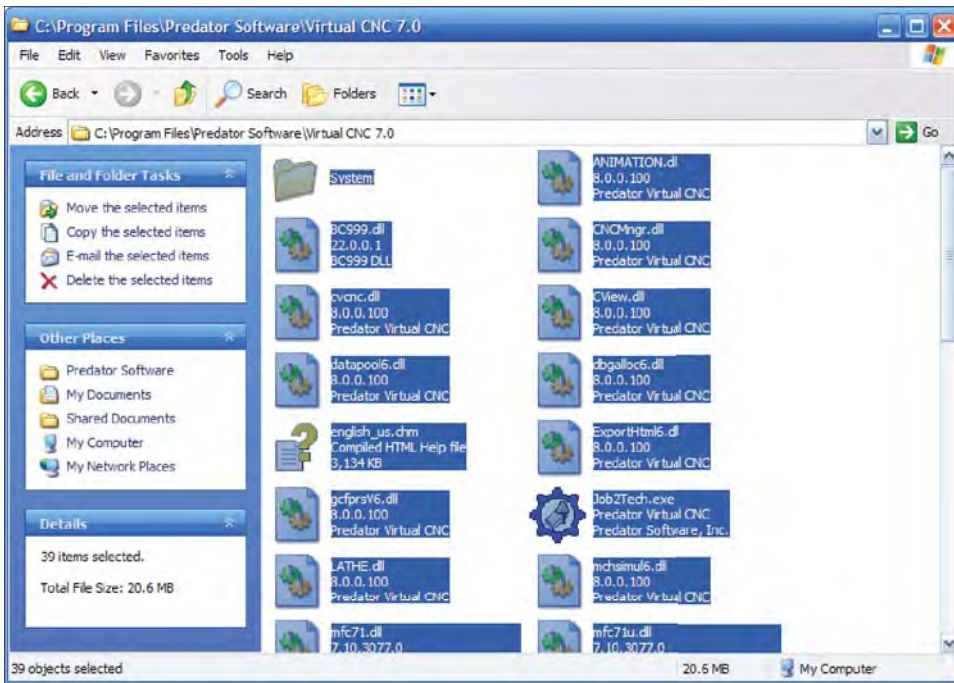


When the installation is done, click the **Finish** button.

Step 3: Navigate to and open the installation folder for Predator Virtual CNC.

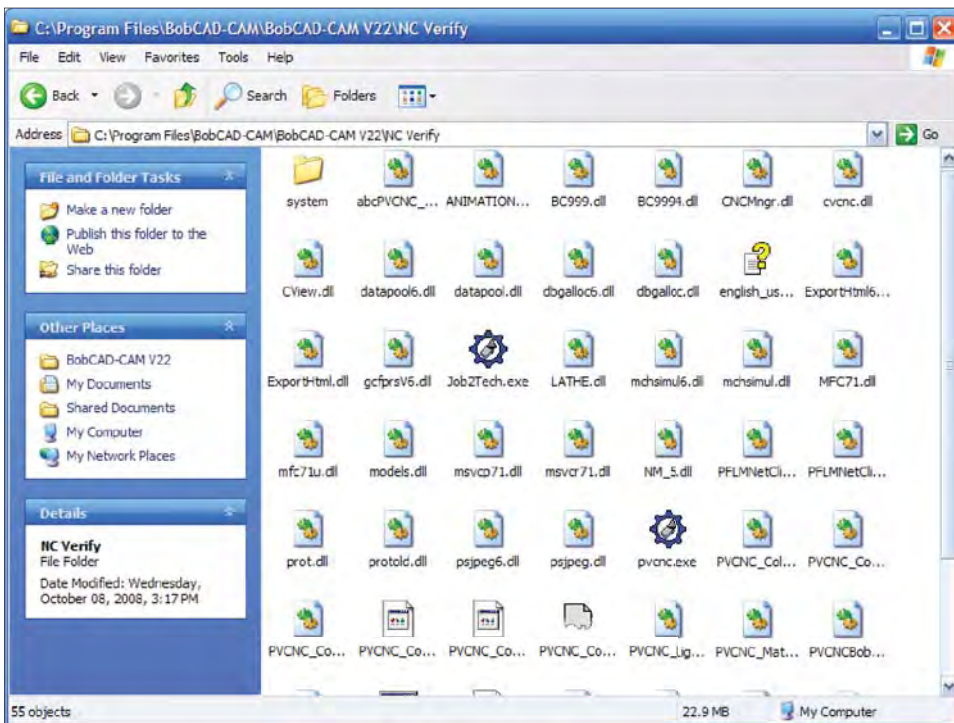


Normally that will be C:\Program Files\Predator Software\Virtual CNC 7.0\). If the default installation folder was left as it was during the last step, this will be the correct folder.



Highlight all of the files inside that folder. The easiest way is to hold the Ctrl key and then press A on the keyboard.

When all of the files are highlighted as shown to the left, hold Ctrl again and press C on the keyboard to copy them all to the Windows clipboard.



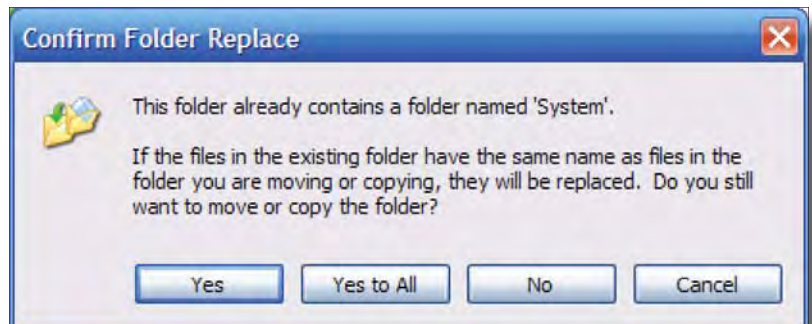
Navigate to and open the installation folder for BobCAD-CAM V22.

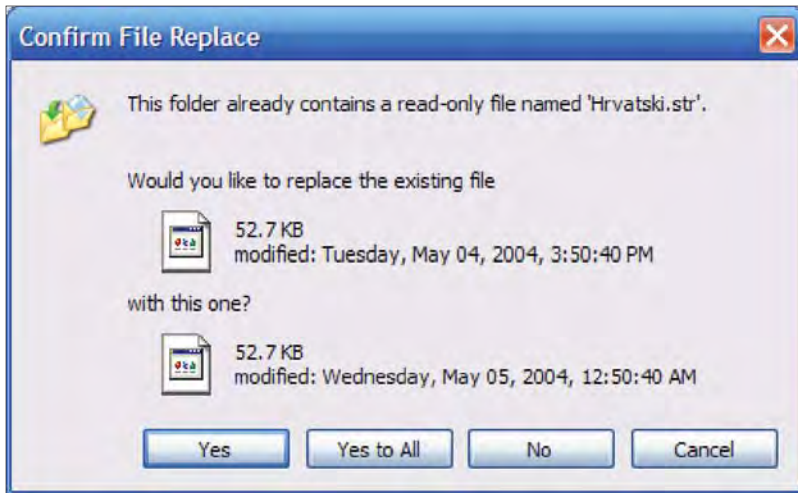
From there, open the NC Verify folder.

Hold Ctrl on more time on the keyboard and press V to paste the copied files.

There will be a lot of files overwritten.

Choose **Yes to All** on both boxes that will appear.





That's it - close the open windows and open BobCAD-CAM. Test that the update was successful by simulating lathe toolpath in 3D.