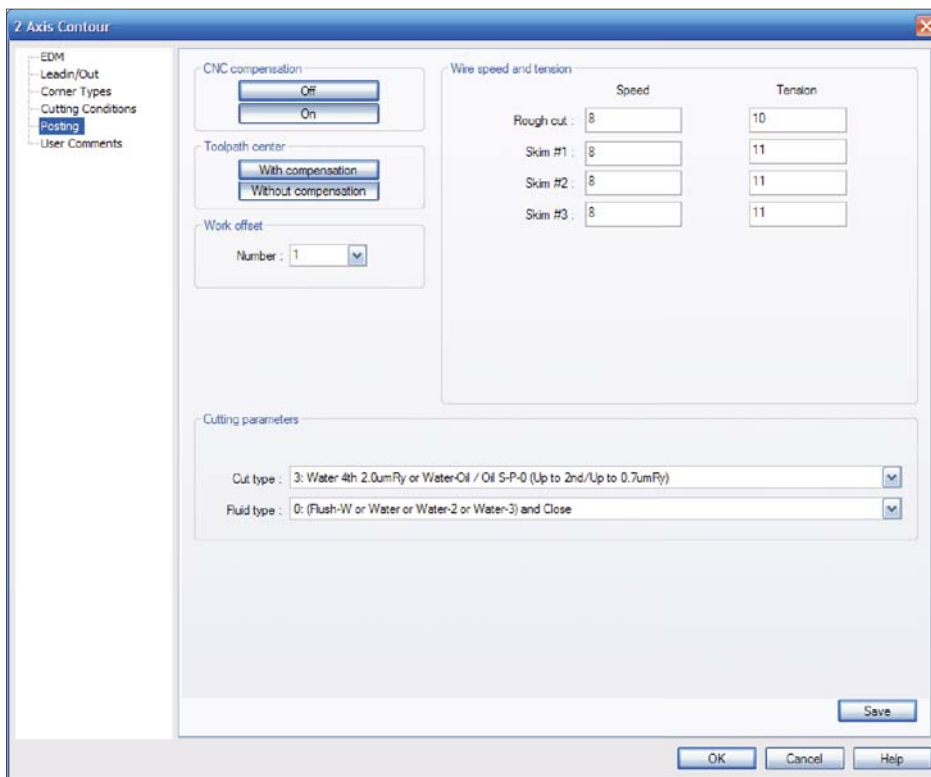




## FAQ #28: What's different in the settings for my Sodick machine?

A: My Sodick machine has a few settings I can choose that aren't the same as other machines. Are these extra settings available in BobCAD-CAM?

Q: Yes, though the changes that occur in the software when using Sodick AQ325L and AQ537L machines aren't as extensive as one might think. Essentially they are a single change in the **Posting** page of the **2 Axis Contour** and **4 Axis Contour** dialog boxes:



In the **Posting** page, two special fields have been added specific to Sodick machines, **Cut type** and **Fluid type**. The Sodick documentation contains the specifics of these settings. BobCAD-CAM provides them as a convenience for the users of these machines.

There is one more change to the software that occurs when one of these machines is chosen: BobCAD-CAM can then receive current cutting conditions directly from the machine and use them in NC programs.