



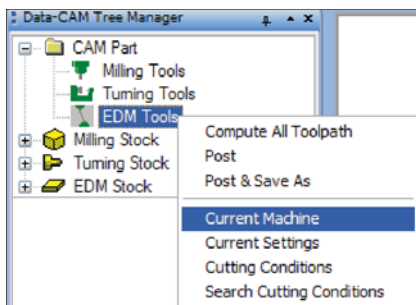
FAQ #23: What's different in the settings for my AgieVision machine?

Q: My AgieVision machine requires slightly different settings than other OEM's machines. What does BobCAD-CAM do differently to accommodate this?

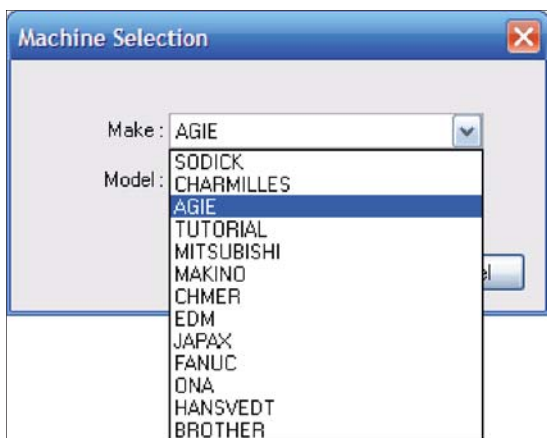
A: AgieVision machines are directly supported from the ground up for both the .ISO shape definition and the .SBL and .SBR job files. BobCAD-CAM automatically posts all three files and stores them in a folder in the NC file save directory on the computer rather than just post processing the .ISO files alone. A few of the dialog boxes also change from the defaults when these machines are chosen in the machine settings.

To choose an AgieVision control:

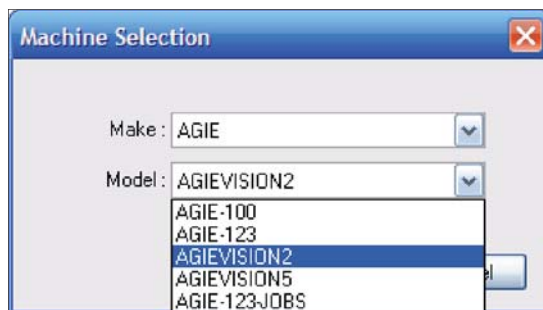
Method 1: Right click on **EDM Tools** under **CAM Part** in the CAM tree. Select **Current Machine** from the list.



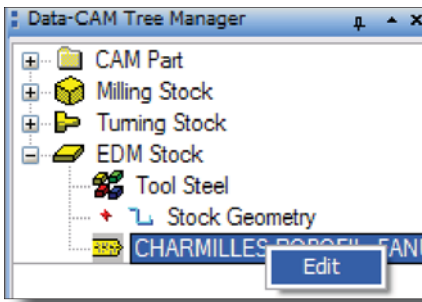
Choose **Agie** from the **Make** drop-down list:



Choose either **AgieVision2** or **AgieVision5** from the **Model** drop-down list:

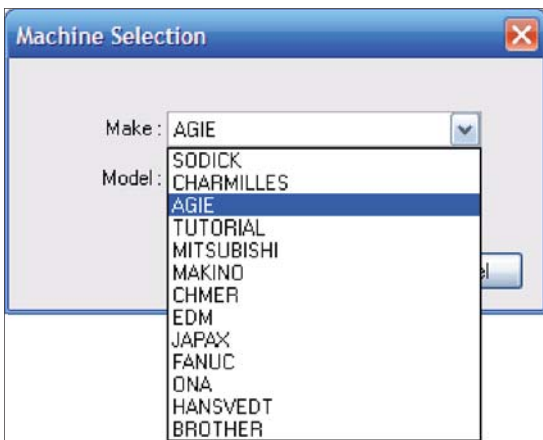


Method 2: Right click on the name of the currently used post processor under **EDM Stock** and choose **Edit**:

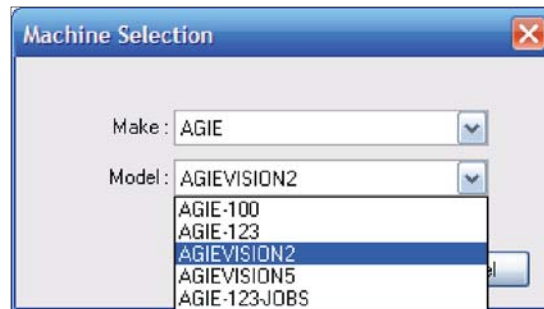


The same dialog box will appear as in **Method 1** above. Note that this is not the same behavior as under the other modules of BobCAD-CAM; this is unique to the Wire EDM portions of the program.

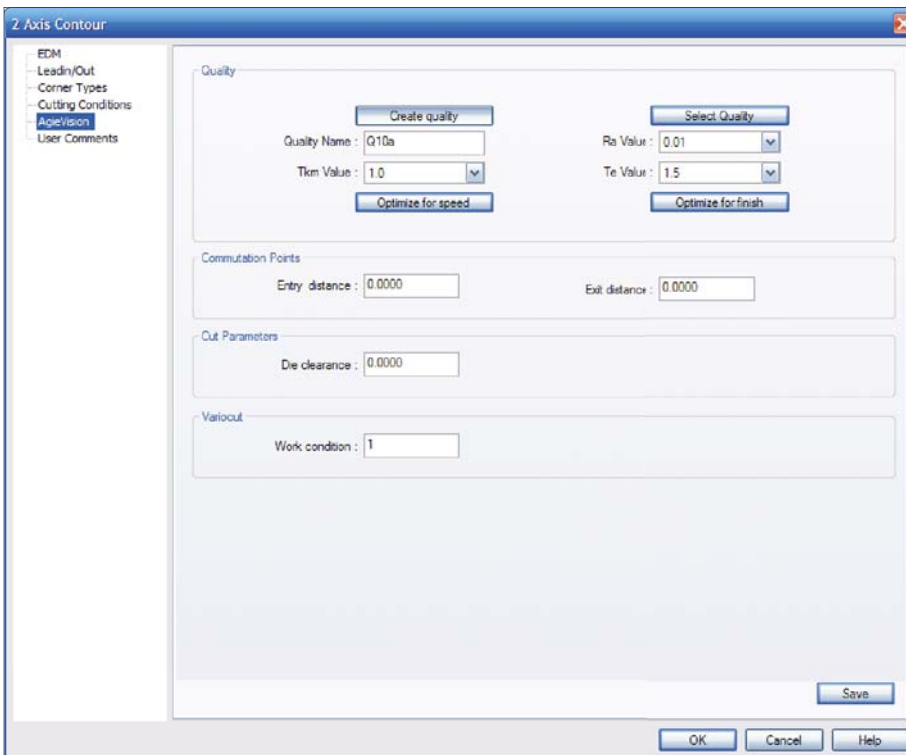
Choose **Agie** from the **Make** drop-down list:



Choose either **AgieVision2** or **AgieVision5** from the **Model** drop-down list:



Whichever method is chosen, the result will be the same.



The other major difference is in the edit dialogs for the individual features. Illustrated here is the special **AgieVision** page in the **2 Axis Contour** dialog box. The **4 Axis Contour** dialog also has the same special page when one of these machines is chosen.

On the next page is a description of the special settings in this dialog that differ from the default standard.

- **Quality**

- **Create Quality:** This setting allows the user to create a new Quality preset.
- **Quality Name:** displays the name of the quality preset in use, or allows the user to type in a new name if Create Quality is set above.
- **Tkm Value (1.0 - 50.0):** See the AgieVision controller manuals for a description of this field.
- **Optimize for speed:** This button allows the user to choose to optimize the generated wire path for speed of cut.
- **Select Quality:** This setting permits the user to choose a pre-defined Quality setting, if any are defined.
- **Ra Value (0.01 - 5.00):** See the AgieVision controller manuals for a description of this field.
- **Te Value (1.5 - 290.0):** See the AgieVision controller manuals for a description of this field.
- **Optimize for finish:** This button allows the user to choose to optimize the generated wire path for finish quality rather than speed.

- **Commutation Points**

- **Entry distance:** This field permits the user to specify the distance of the entry into the profile from the point where the wire path switches direction for subsequent passes.
- **Exit distance:** This field permits the user to specify the distance of the exit from the profile from the point where the wire path switches direction for subsequent passes.

- **Cut Parameters**

- **Die clearance:** This field dictates the extra clearance given to the cut in inside (die) features.

- **Variocut**

- **Work condition:** This setting sets the predefined Variocut cutting conditions present on the control.

- **Save:** When clicked, this button saves the currently set conditions in this page as the default settings for this type of feature.