



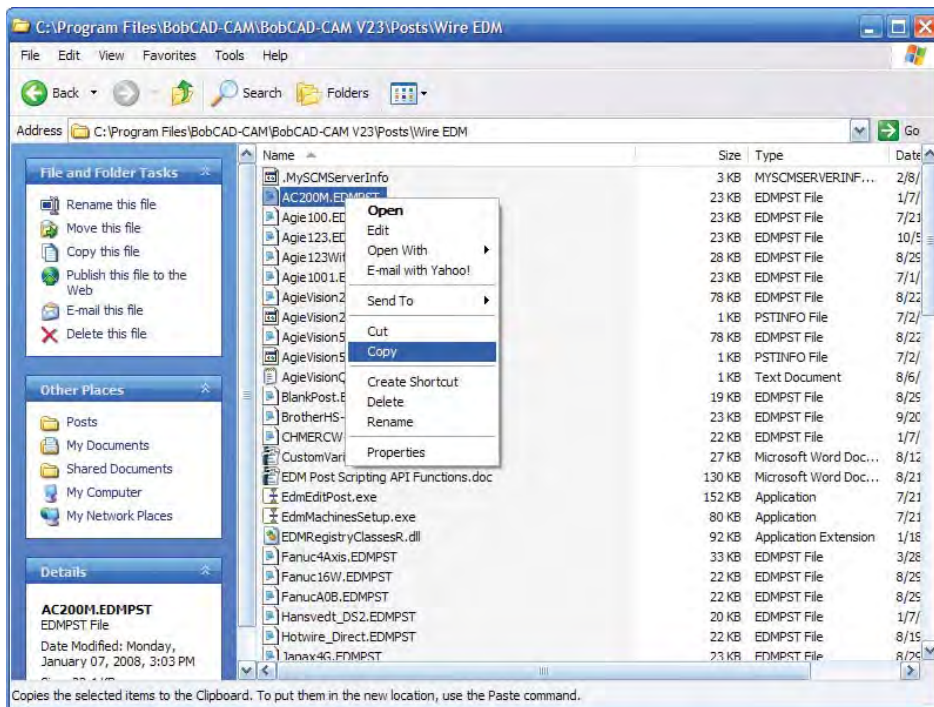
FAQ #24: How do I set up a new machine?

Q: My wire EDM machine isn't listed in the setups that come with the software. How do I set up a new one?

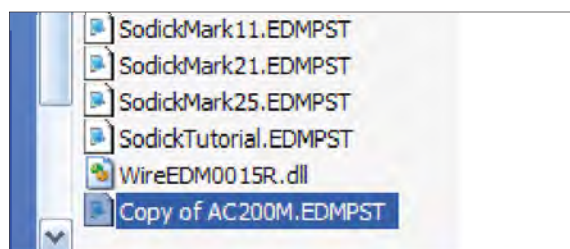
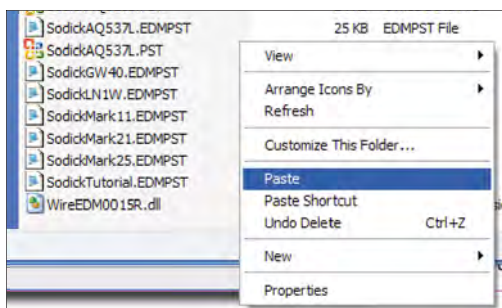
A: BobCAD-CAM ships with a large number of pre-built machine setups, but it is impossible to include a setup for every wire EDM machine in existence. There are five basic steps involved in creating a new wire EDM machine setup, and the process involves two of the extra utility programs that are included with the installation of BobCAD-CAM.

Step 1: Make a post processor configuration (.EDMPST) file for the control. The easiest method is to make a new .EDMPST file is to copy an existing file, then rename it and edit it.

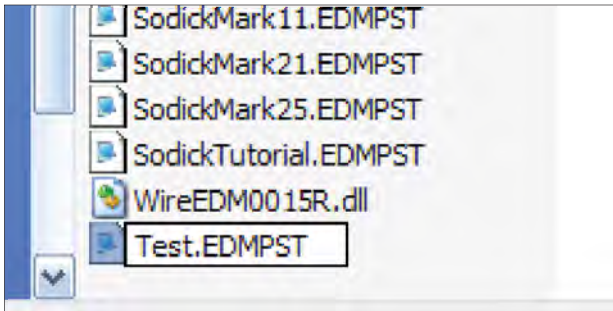
Navigate to “C:\Program Files\BobCAD-CAM\BobCAD-CAM V23\Posts\Wire EDM” on the computer, and right click on the post processor most similar to what the machine needs. Choose **Copy** from the menu that will appear.



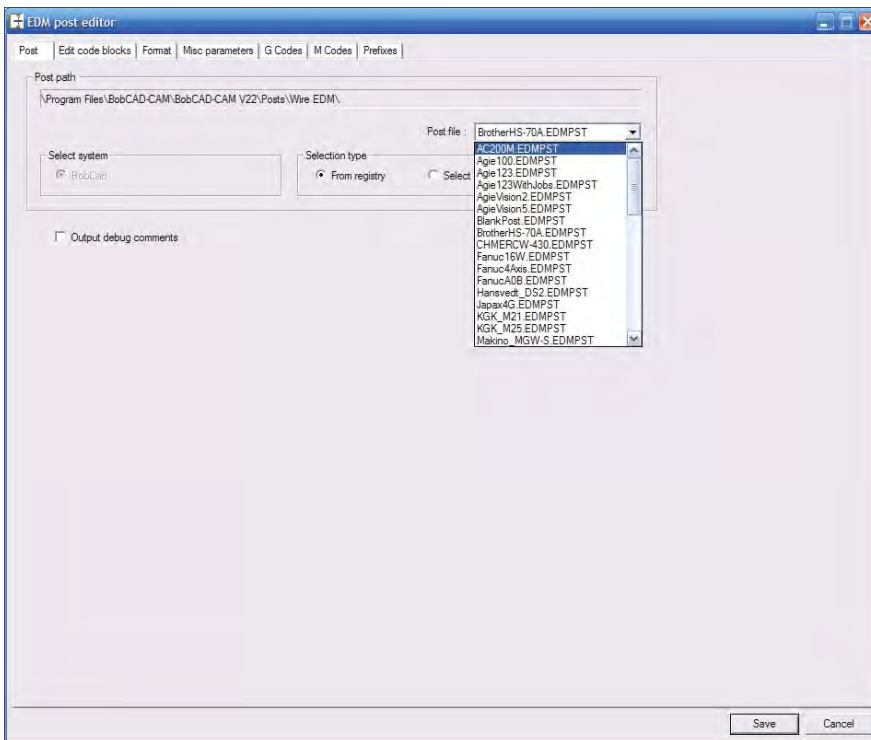
Next, right click anywhere in the window in the whitespace between files and choose **Paste**. The new file will likely be named “Copy of” and then the name of the original file.



Change the name of the file to something recognizable. Usually the name of the controller or the name of the machine itself are good choices as they both make it easy to choose this configuration from the list when it comes time to build the machine setup file. For this example, it's simply named "Test.EDMPST."



To edit the post processor file itself, double click on the "EdmEditPost.exe" in the same folder.



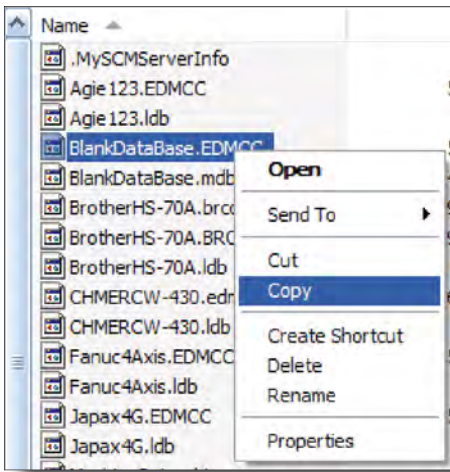
Choose the name of the new post processor file from the list as shown on the left and begin editing by clicking on each page and setting all of the available options.

Explanations for all of the variables and parameters that are involved is out of the scope of this FAQ. Watch for a tutorial coming soon to explain the ins & outs of editing a post processor.

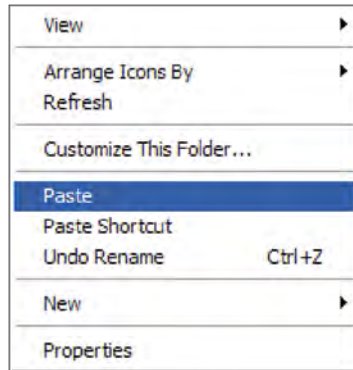
When finished, click the **Save** button at the bottom of the dialog and close the window.

Step 2: Make a cutting conditions database (.EDMCC) file for this machine. The steps for this are nearly identical to the steps listed above for making a new .EDMPST file.

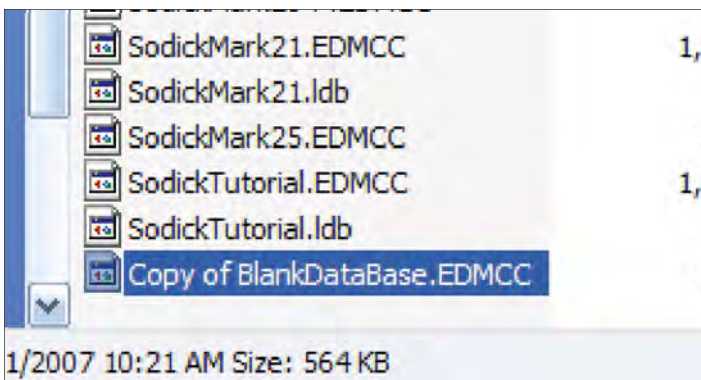
Navigate to "C:\Program Files\BobCAD-CAM\BobCAD-CAM V22\EDMTechnology\EDMCuttingConditions" on the computer, and right click on one of the .EDMCC files listed there. Choose **Copy** from the menu that will appear.



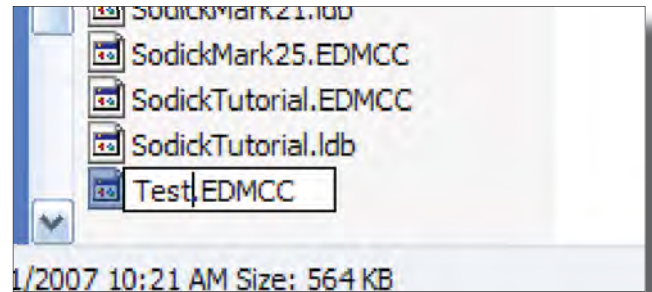
Next, right click anywhere in the window in the whitespace between files and choose **Paste**.



The new file will likely be named “Copy of” and then the name of the original file.



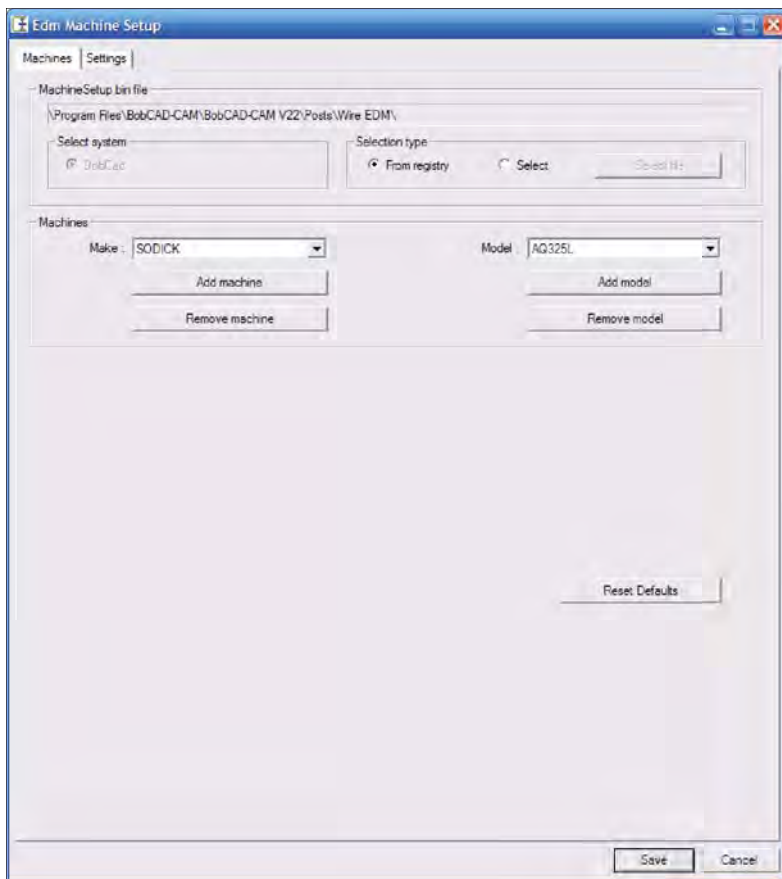
Change the name of the file to something recognizable. Usually the name of the controller or the name of the machine itself are good choices as they both make it easy to choose this configuration from the list when it comes time to build the machine setup file. For this example, it’s simply named “Test.EDMCC.”



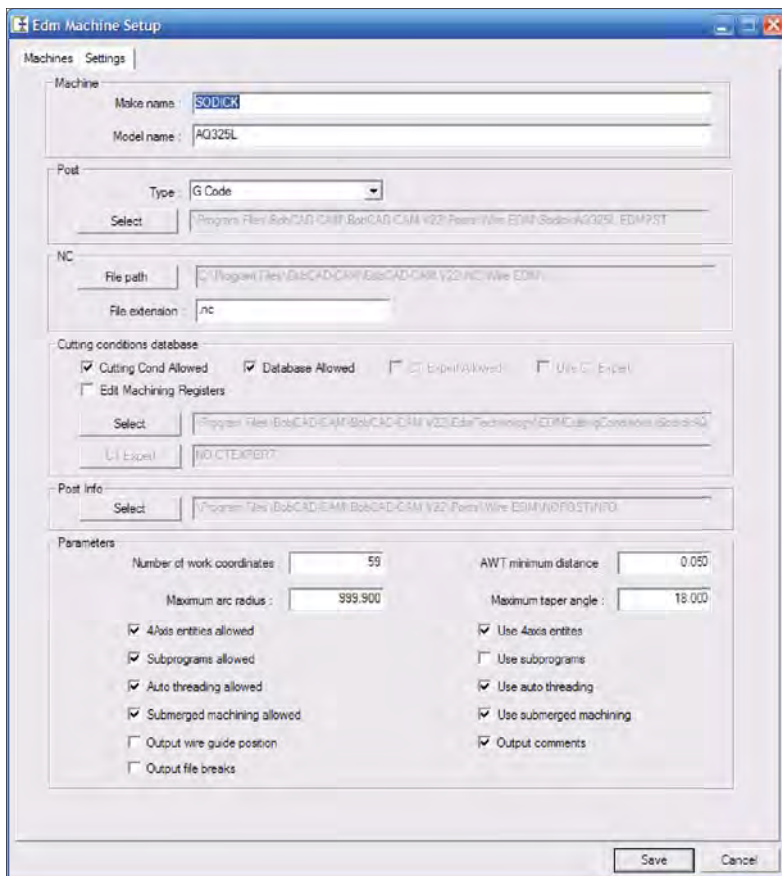
Editing the contents of the conditions database is a later step; for now it is enough to have the file.

Step 3: Make a machine setup configuration and bring the .edmpst and .edmcc files together.

In the same folder as the .EDMPST files, “C:\Program Files\BobCAD-CAM\BobCAD-CAM V22\”, there is a program called “**EdmMachinesSetup.exe.**” Double click on it and a window with two pages will appear.



In the first tab, **Machines**, click on **Add machine** in the **Machine** section. The drop down list will change to say “NEW_MACHINE” under **Make**, and “NEW_MODEL” under **Model**.



Click on the **Settings** tab at the top of the dialog box. In the **Make name** and **Model name** fields, type in the name of the make and the model names for the machine. This is what will show in the software when the machine is chosen in the next step. In this example, “Test” and “Test” were chosen.

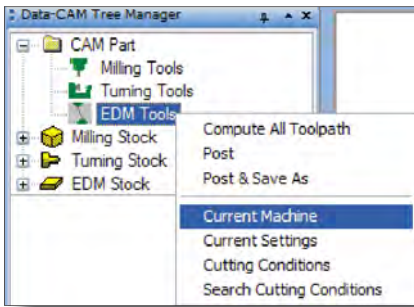
Click on the **Select** button in the **Post** section and choose the .EDMPST file created earlier, and do the same in the **Cutting conditions database** section and choose the .EDMCC file. Click **Save** to save the configuration.

More of the functions in this program will be described separately in another FAQ.

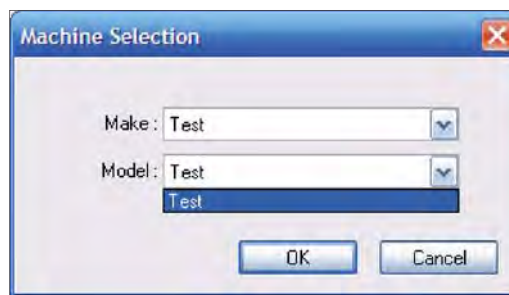
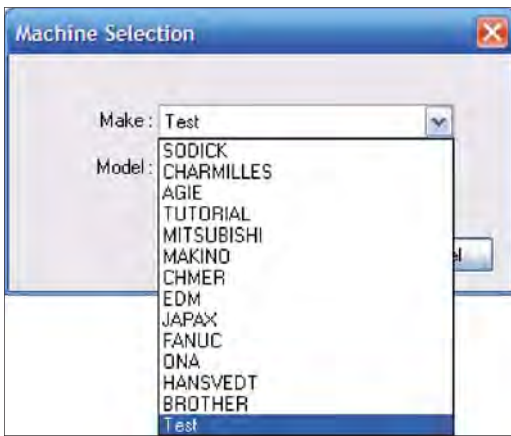
Click the red close button in the upper right corner to close the program.

Step 4: Load BobCAD-CAM and choose the new machine setup.

Right click on **EDM Tools** under **CAM Part** in the CAM tree. Select **Current Machine** from the menu.



Choose the new machine configuration from the drop-down list. Click **OK** once it's been picked from the lists and BobCAD-CAM will load the new configuration, including the post processor and the cutting conditions database.



Step 5: Edit the cutting conditions database to reflect what this machine needs. Be sure to refer to the manufacturer's recommendations for all of the initial values to set, then adjust for what is actually used in the shop. The details of editing the databases isn't repeated here, see FAQ #23 or the built-in **Help** system in the software for the complete explanation.

That's it, the new machine configuration will be ready to use.