



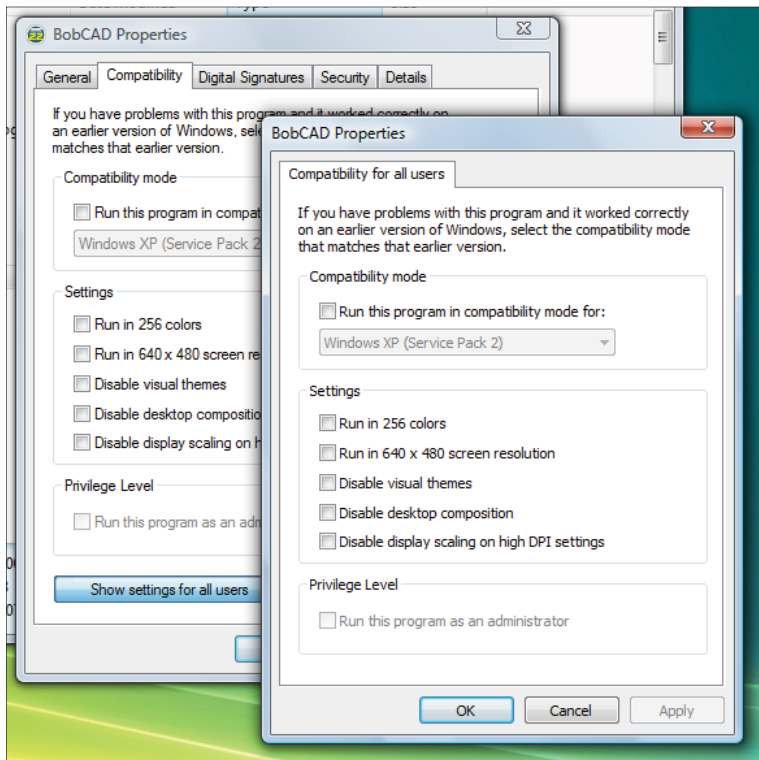
FAQ #8: What issues might I see in Vista with V22?

With every major Microsoft operating system release, there are always concerns of compatibility with older, existing software. BobCAD-CAM is no exception. We have tested the software's compatibility to the best of our ability but there are still two issues which have appeared over time as users upgraded their operating system releases.

Possible Issue 1. BobCAD-CAM V22 won't start.

Right-click on each of the files below and click on Properties in the menu that will appear. From the box that will pop up, choose the Compatibility tab at the top. Click near the bottom of the box on the button labeled "Show settings for all users."

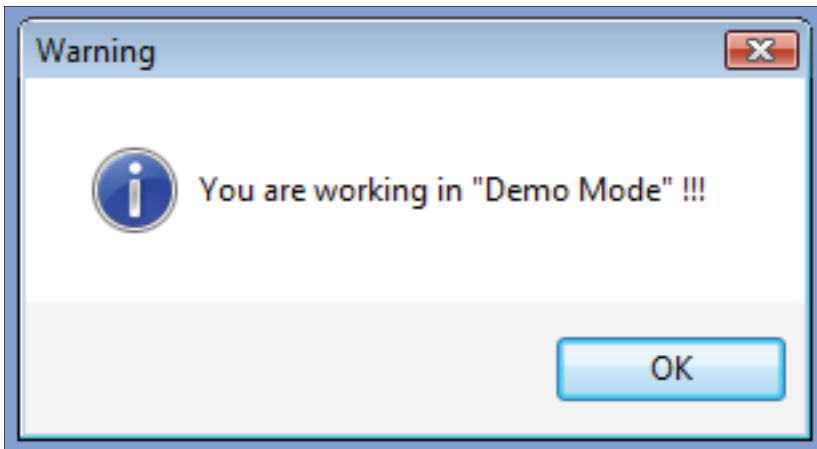
C:\Program Files\BobCAD-CAM\BobCAD-CAM V22\BobCAD.exe
C:\Program Files\BobCAD-CAM\BobCAD-CAM V22\MillEditPost.exe
C:\Program Files\BobCAD-CAM\BobCAD-CAM V22\LatheEditPost.exe
C:\Program Files\BobCAD-CAM\BobCAD-CAM V22\NC Verify\pvcnc.exe
C:\Program Files\Predator Software\Editor 7.0\PEditor.exe
C:\Program Files\Predator Software\Editor 7.0\PVViewer.exe
C:\Program Files\Predator Software\Virtual CNC 7.0\pvcnc.exe



Check the box labeled "Run this program in compatibility mode for:" and choose "Windows XP (Service Pack 2)." Afterward, check the box marked "Disable desktop composition" and then click OK.

Possible Issue 2. BobCAD-CAM V22 cannot read the hardware lock.

If BobCAD-CAM V22 starts and displays the demo mode box when the key has already been inserted into a USB port as shown below, the user must be given full admin privileges on the computer.



The reason for this is that the hardware lock driver itself must be running under the administrator account in order to read the key. BobCAD-CAM, Inc. is waiting for new drivers to be released for the hardware locks that will enable user-level access to it but until that happens BobCAD-CAM V22 must be run under an administrator account on vista-loaded computers. When these drivers are released, this FAQ topic will updated with the procedures for installing the proper user-level drivers.