
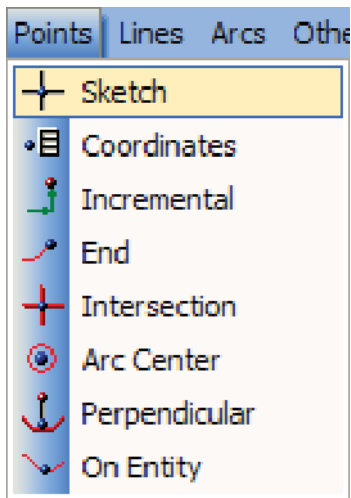


FAQ #1: How do I use selection mode?

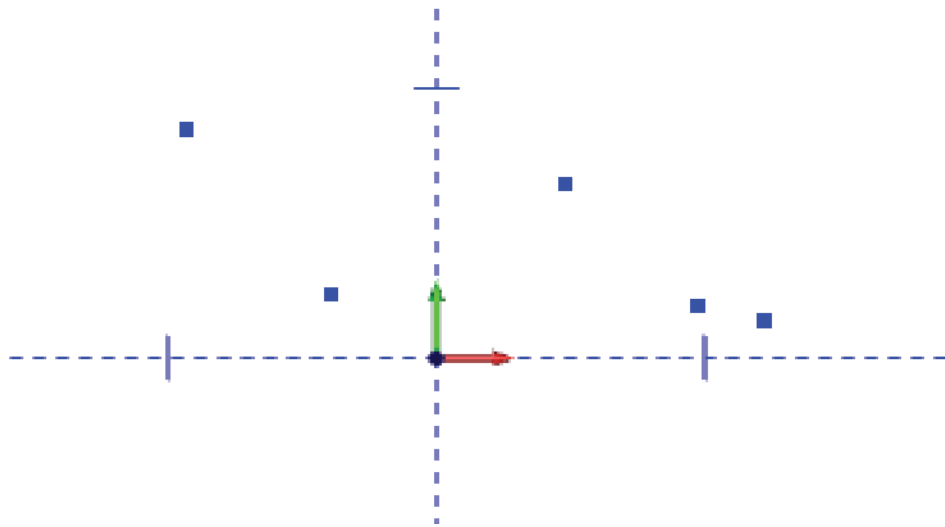
Selection in BobCAD-CAM V22 uses a special mode activated by the Selection Mode icon  on the toolbar.

Step 1. There needs to be geometry on the screen to select. If there is, use it for this short lesson and skip past the next section to **Step 2.**

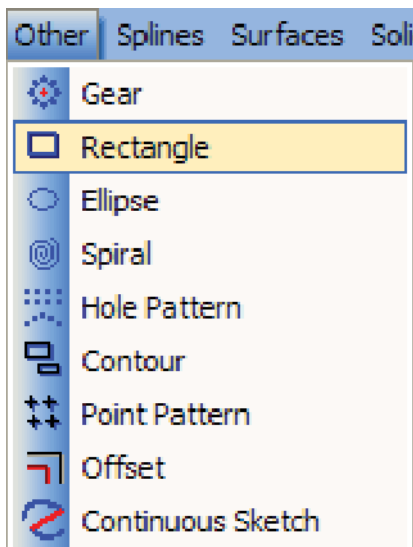
Draw some points and a rectangle. To do this, click on **Points** in the main menu and then on **Sketch**.



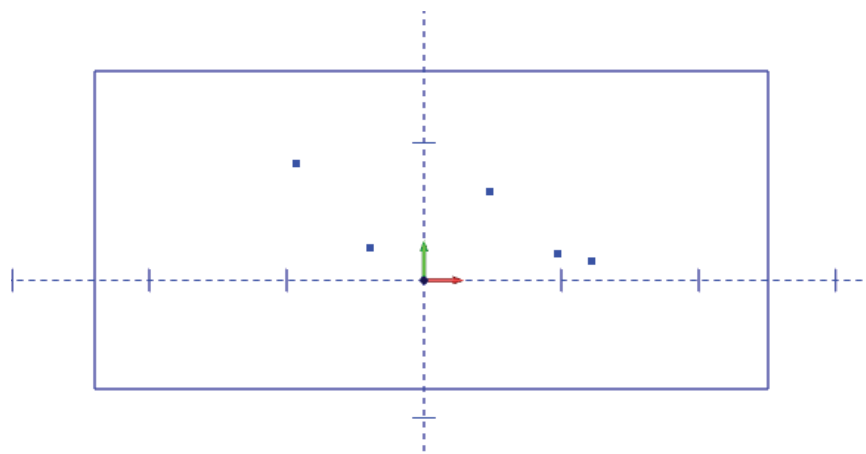
Click a few times on the **Workspace** to get some points on the screen as below.



Next, go to the **Other** menu and choose **Rectangle**.

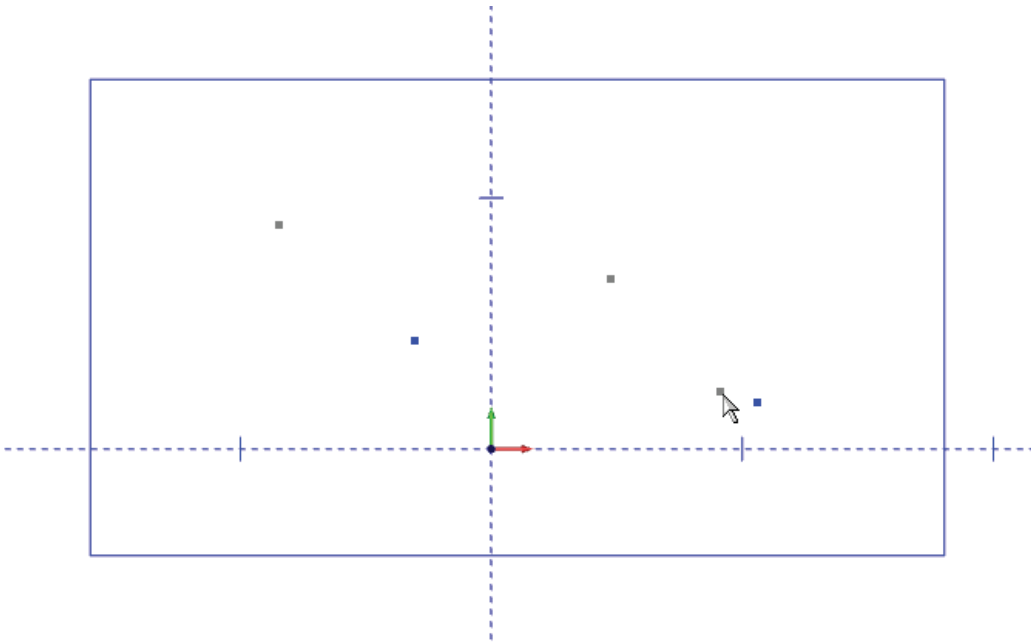


Make sure that **Sketch** and **Pick** are both set so that the rectangle can be sketched. Click once in the **Workspace** for the first corner of the rectangle and once more for the opposite corner. Right-click in the **Workspace** and choose **Cancel** to quit the function.



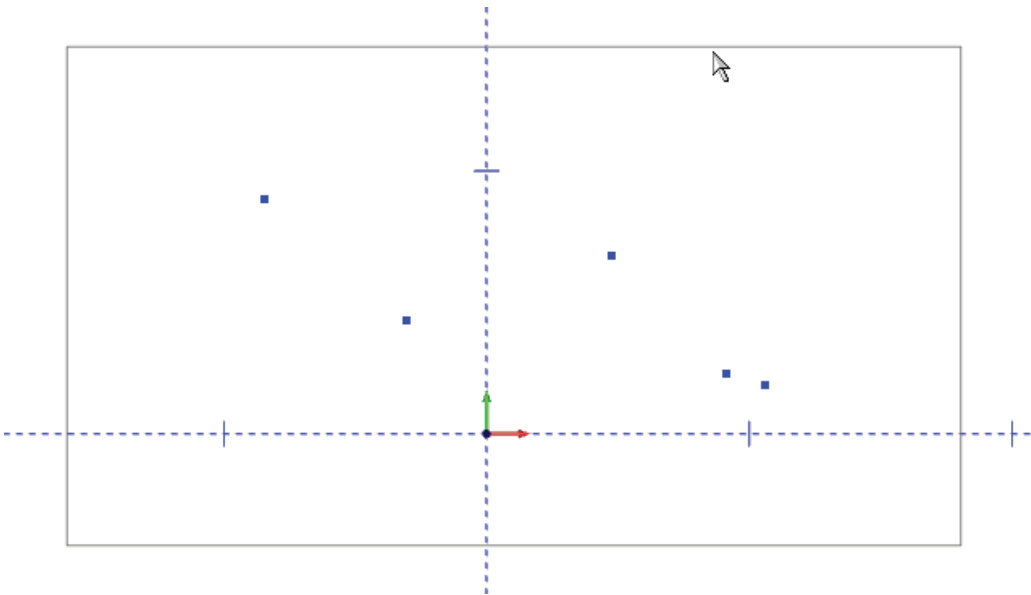
Step 2. Click on the **Selection Mode** icon on the toolbar (shown above). When the icon appears depressed, BobCAD-CAM's selection mode will be active.

Click on some of the points in the drawing to select them. When they are selected, they will highlight in a different color, grey by default but this can be changed in the **Preferences** menu.

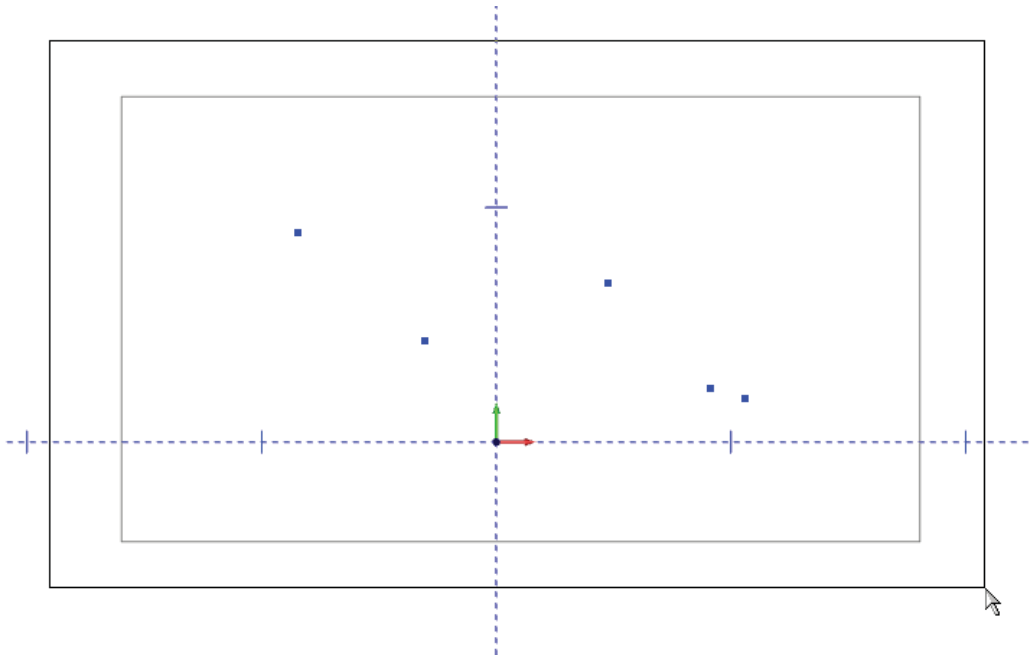


To deselect something, simply click on it again while selection mode is still active and it will deselect and any highlighting on it will be removed.

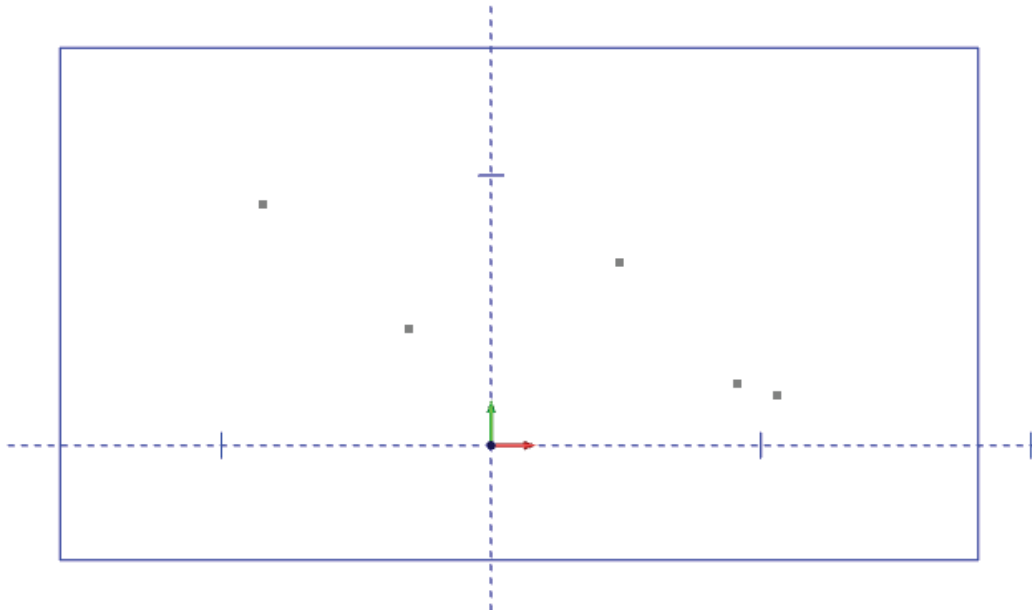
Hold shift and left click anywhere on the rectangle to select it. Do the same thing to deselect.



Click off in a corner and drag the mouse with the left button pressed to highlight an entire region of the drawing. If anything inside the box were previously selected, it will deselect. This can be a useful trick for selecting around another area: select that area first, then drag the mouse to select everything else around it and toggle the selection of the first entities off.



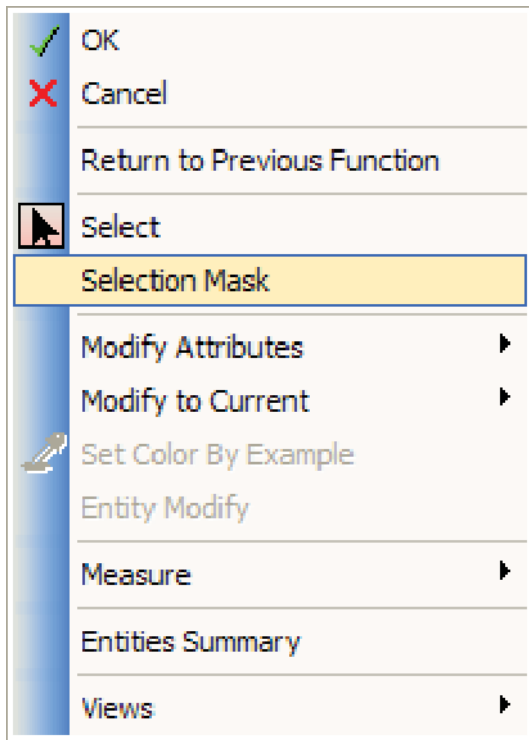
The result is shown below:



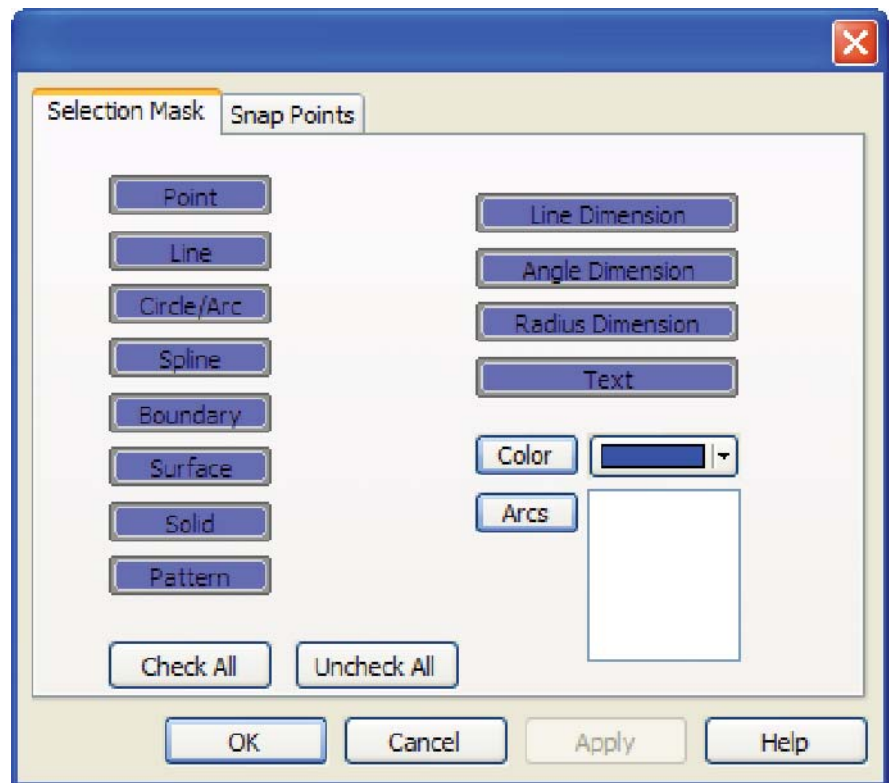
Using the Selection Mask

BobCAD-CAM V22 also has a new selection masking feature to ease selecting specific entities that may be difficult to get to otherwise.

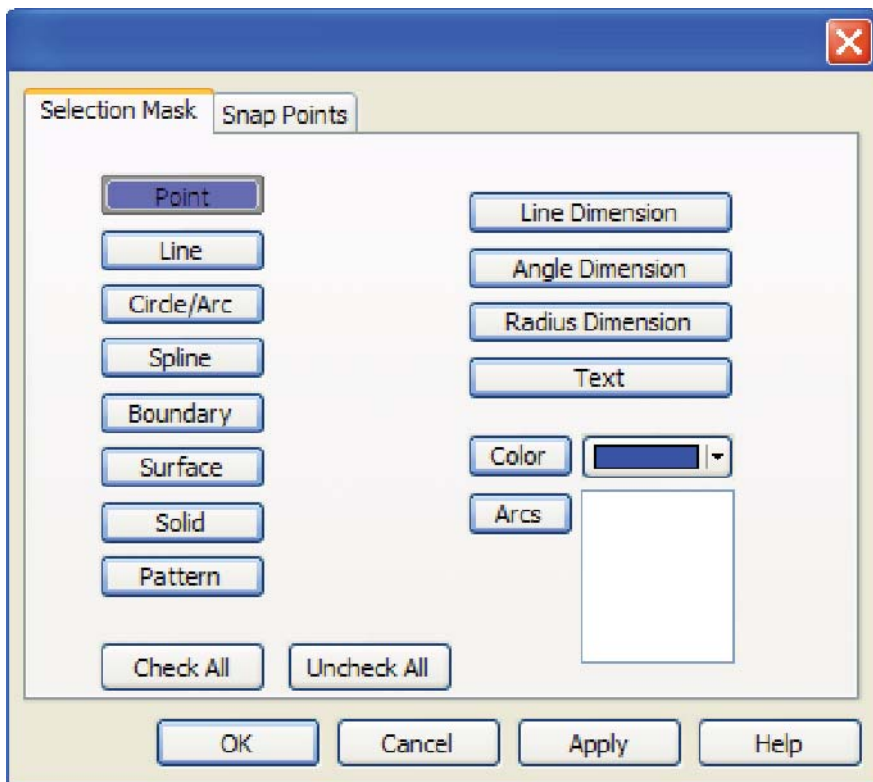
Step 1. Right click in the **Workspace** and choose **Selection Mask** from the drop-down menu.



The **Selection Mask** dialog will appear:

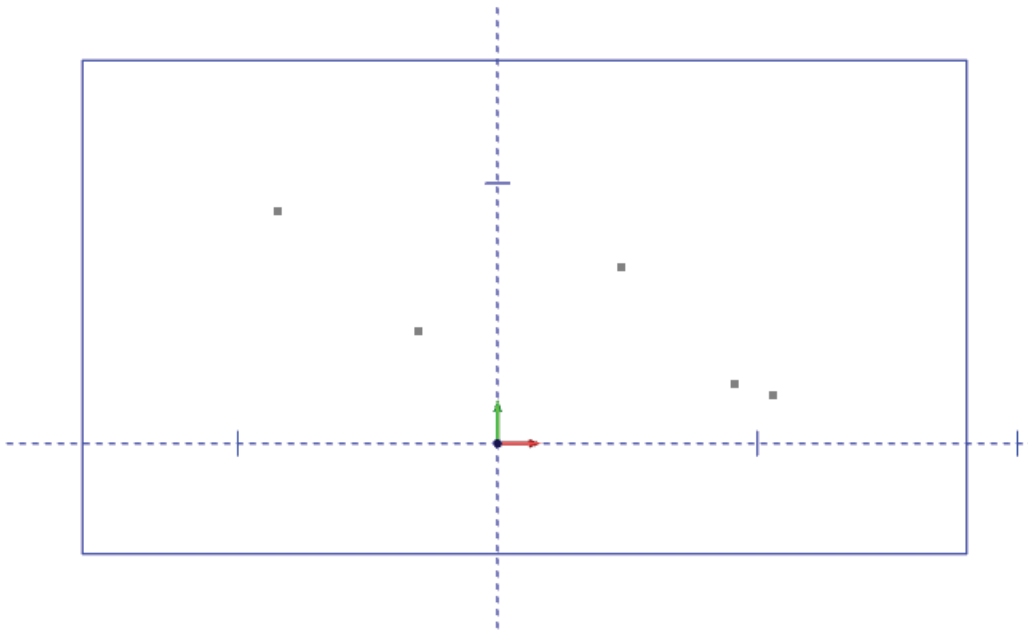


Click on **Uncheck All** to turn off all of the selections available. Click on **Point** to enable selection of only the points sketched in the drawing earlier.



Click **OK** to force BobCAD to accept the changes here.

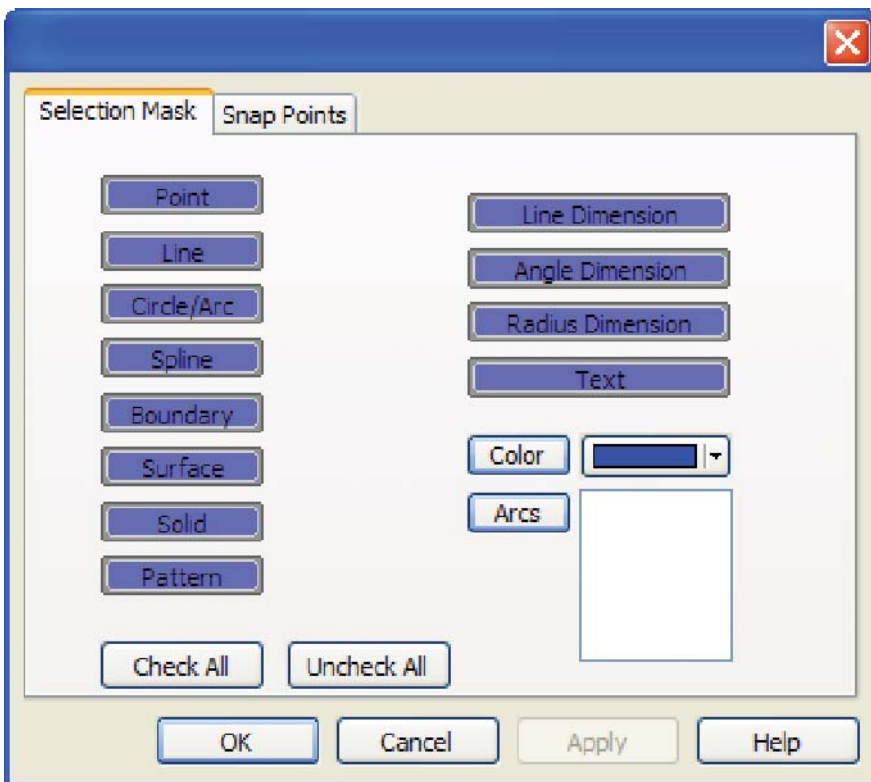
Step 2. With selection mode active (see Step 2 in the previous section), drag a box over the entire drawing.



Note that only the points will highlight, no matter how closely one may try to click to the lines of the rectangle.

Step 3. It is important to remember to return the selection mask back to normal.

Right-click in the **Workspace** and choose **Selection Mask** again. Click on **Check All** to return to the mask to normal.



Exit selection mode by clicking off the **Selection Mode** icon on the toolbar.