



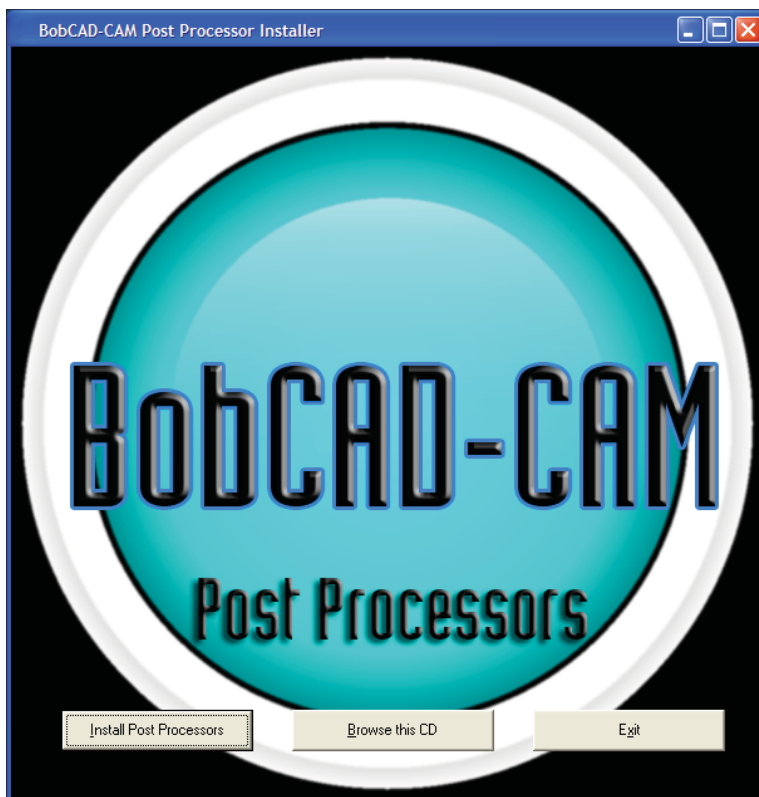
FAQ #16: How do I find and install post processors?

BobCAD-CAM V22's post processor list is continually growing. As time goes on, more and more are added. Often several are added in a single day. Since it is impossible and not necessarily even desirable to rebuild the main software installation CD each time new posts are added, about once a month a new post processor CD is compiled to be shipped with new packages. These CDs are useful for those without Internet access at the station that BobCAD-CAM is installed on. These instructions are centered on BobCAD-CAM V22, but the same steps apply to all versions from version 18 and up.

There are two ways commonly used to get post processors. One is to install the post processor from the CD, the other is to download and install them from the web.

Method 1: To locate and install a post processor from the CD:

Step 1. Insert a BobCAD-CAM Post Processor CD into the CD/DVD drive of your computer. The following screen should automatically appear in a few moments:

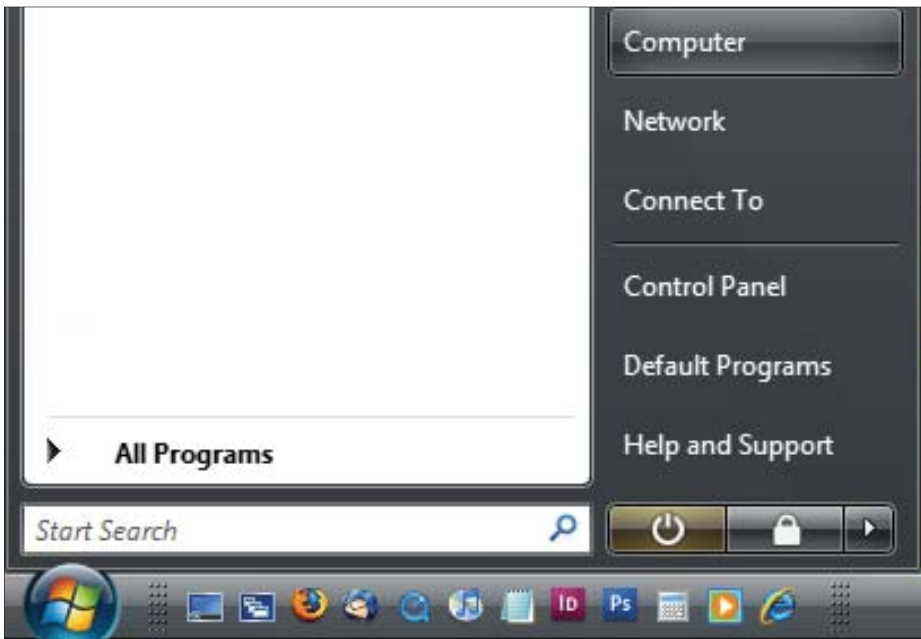


If it does not, Autoplay has been turned off for your CD/DVD drive. If this is the case, you may get the program to appear by double-clicking on the CD drive icon in Windows.

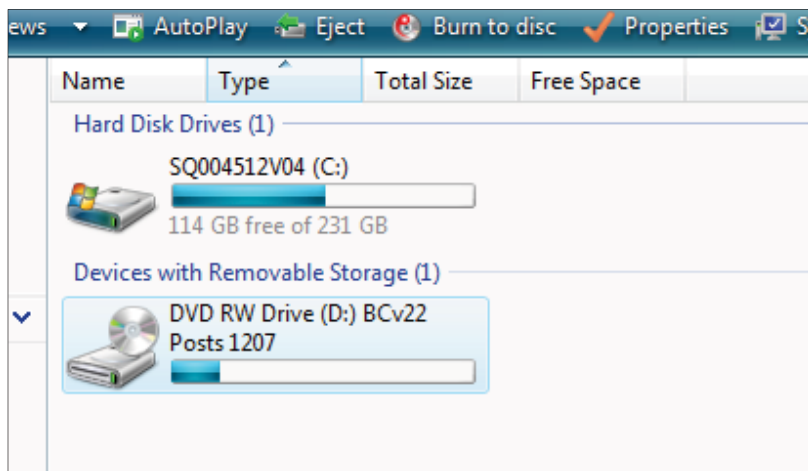
To manually run the programs on the CD:

Microsoft Windows Vista:

Step A. Click on Computer from the system menu as shown below:

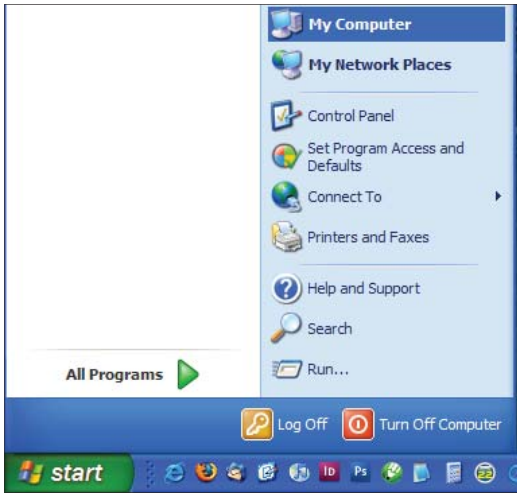


Step B. Double-click on the CD drive icon, or right-click on it and select Open from the menu. The CD should begin spinning and the program will run.



Microsoft Windows XP:

Step A. Locate the My Computer icon. If Windows XP is set to use the default Start menu, My computer will be located in the menu itself as shown on the next page:

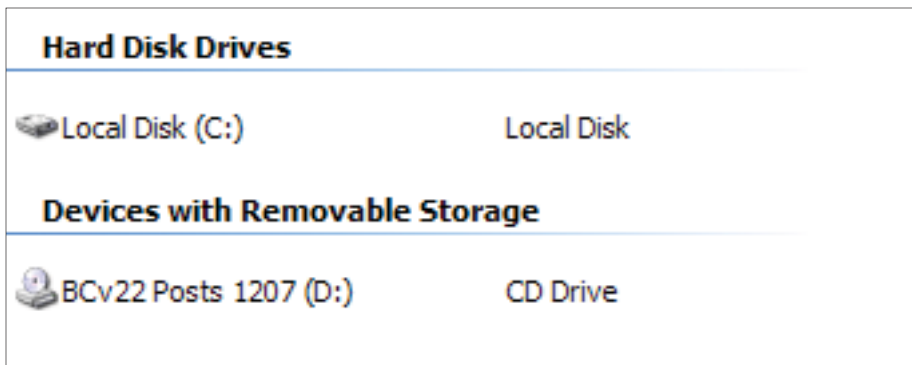


If using Windows XP in Classic Start Menu mode, the My Computer icon will be located directly on the Desktop:

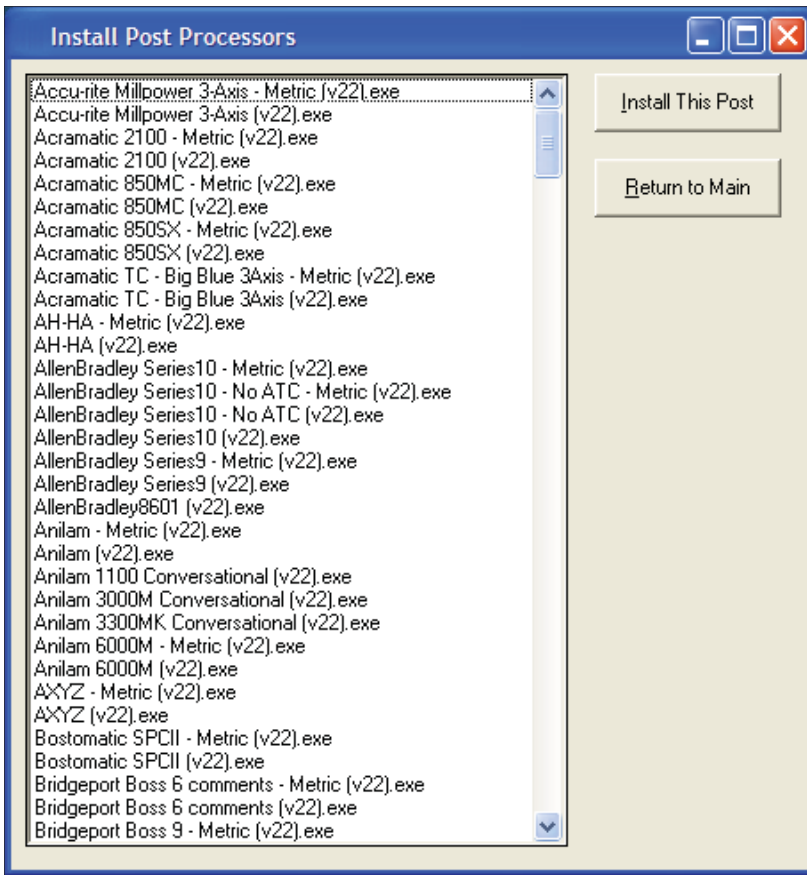


Left click once on My Computer if it is in the Start Menu, or double left-click on the icon if it is present on the Desktop.

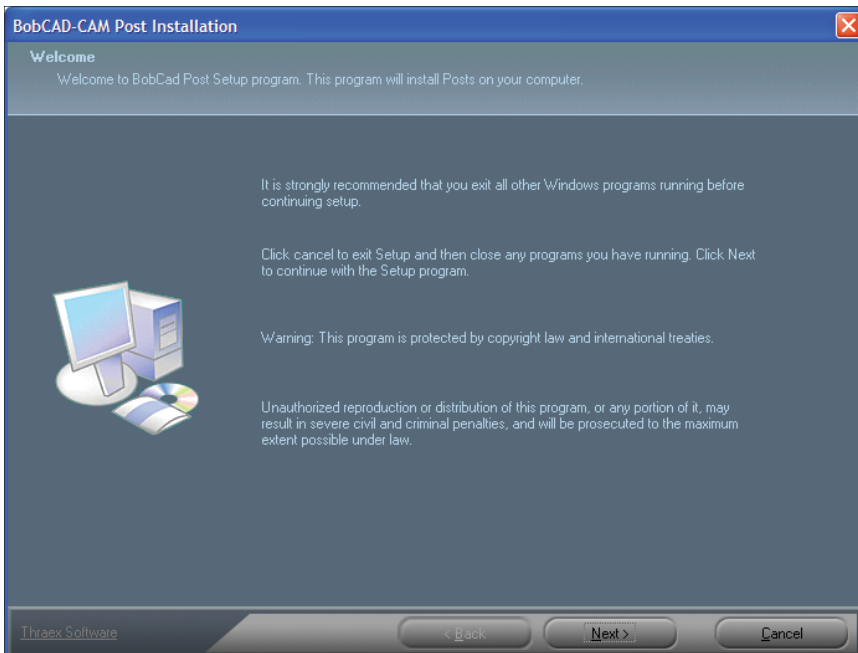
Step B. When the My Computer window appears, double-click on the CD drive icon, or right-click on it and select Open from the menu. The CD should begin spinning and the installer program will open.



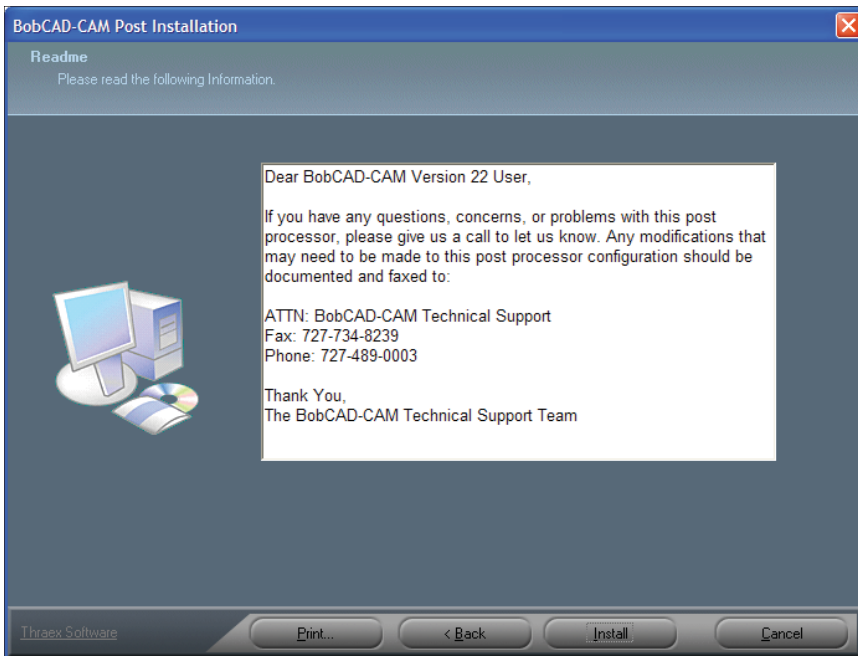
Step 2. From the main screen of the Post Processor CD, Click on **Install Post Processors**. A box will appear (shown on the next page) with the list of the post processors present on the CD.



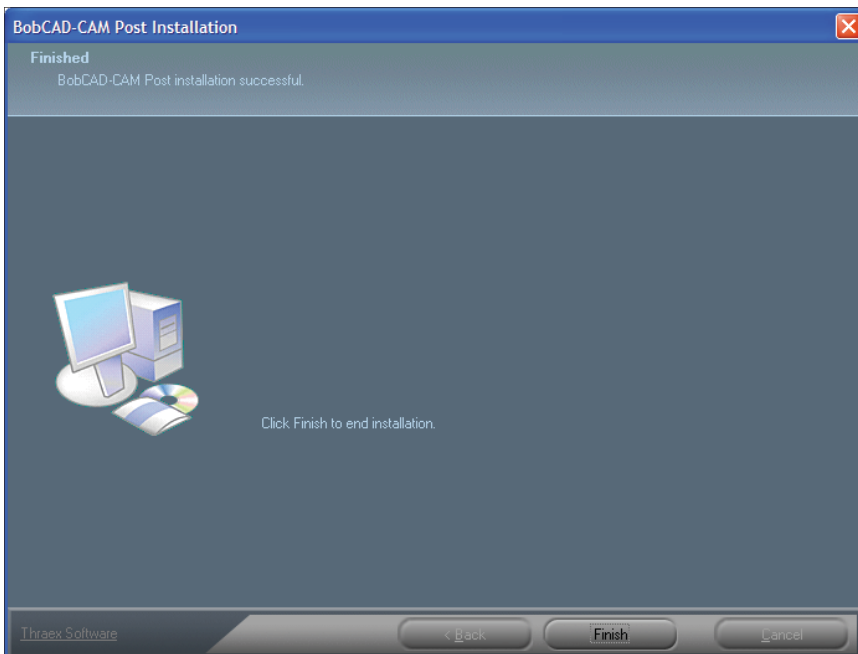
Choose a post processor from the list and click on **Install This Post**. The installer for that post will immediately run from the CD.



Click **Next** on the first box that will appear.



In the second box that will appear, read the note in the textbox, then click on **Install**.



When the post processor has been successfully installed, the final box will appear. Click **Finish** to quit the installer.

Step 3. Repeat **Step 2** for any additional post processors that are required. When finished, close all of the boxes that the install CD created and put the CD away. All of the required post processors should be installed and ready to use.

Method 2: To download and install a post from the Web:

Step 1: Open a web browser (such as Internet Explorer, Mozilla Firefox, or Opera, etc.) and navigate to:

<http://www.bobcad.com/>

When the main page has loaded, click on the Support button at the top of the page. The look of the support page may very likely change over time, but most up-to-date list of post processors may be found here.

On this page are links to take the user to the correct list of post processors. Choose the appropriate link for the versions of BobCAD-CAM used and the type of post processor required.

Step 2. In the post processor lists, the posts are listed in alphabetical order by controller make & model. See the illustration below.

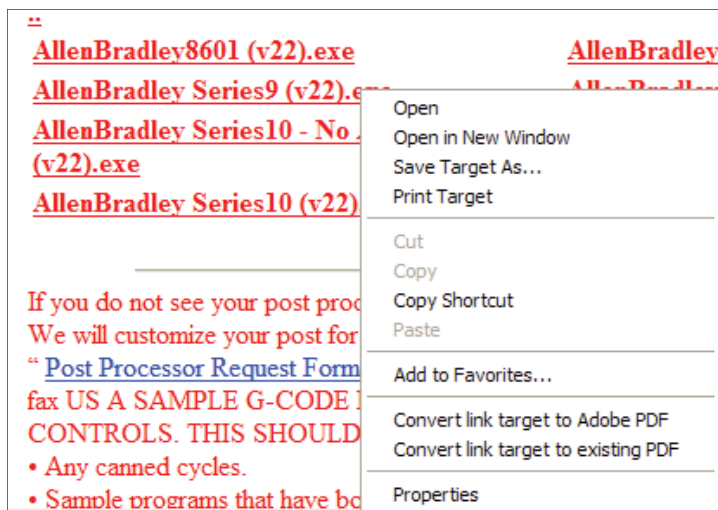


Locate the make of the controller on the machine and click on its name. The list will jump to the page for that make. Right-click on the post for the model required, then choose either **Run** or **Save**. On different browsers, these options actually have different names. For these examples, the options will simply be called **Run** and **Save**.

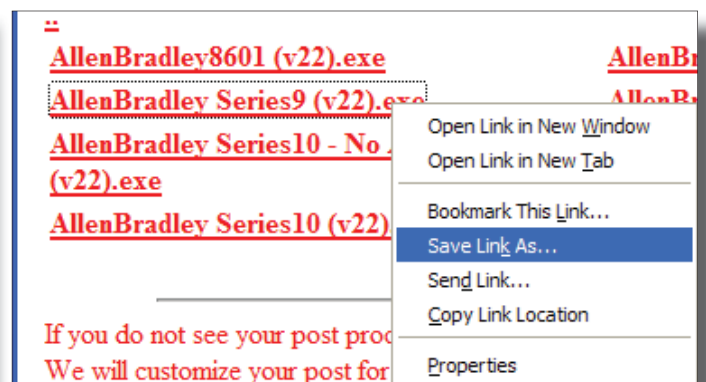
If the post installer file is run from where it is, many browsers will need to clear the internet browsing cache before running it again should the post be updated, so it is recommended to save the file instead to avoid this.

If **Run** is chosen from the menu:

Internet Explorer:



Mozilla Firefox:

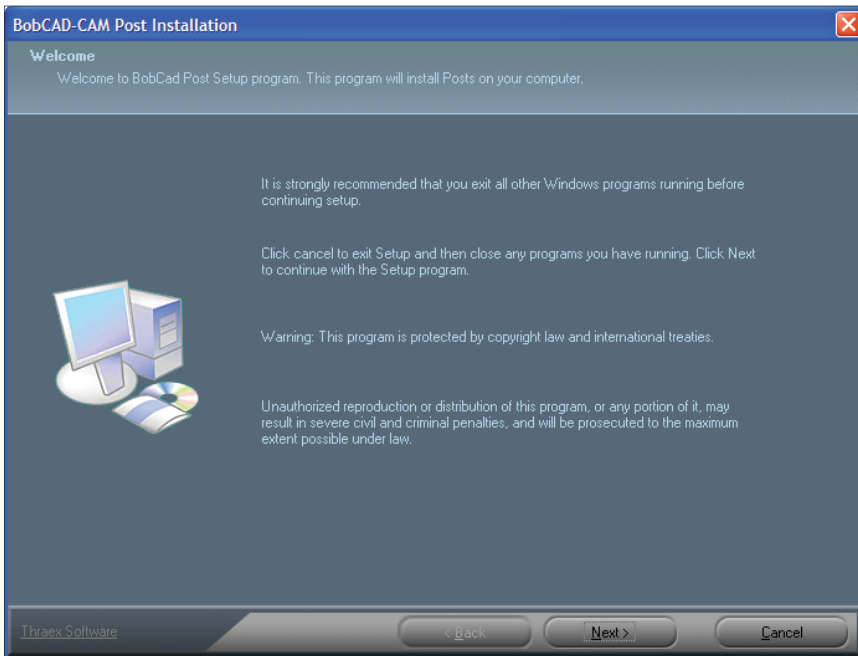


If **Run** is chosen, the web browser will download the file to the computer's temporary folder and automatically run it from there. If the user chooses this method, skip the next section on saving the file to the section on installation.

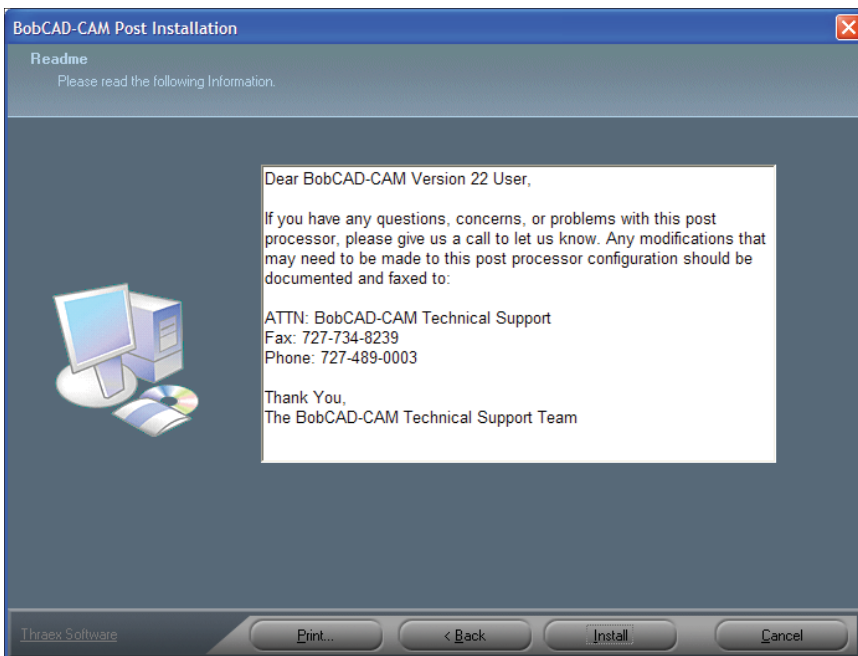
If **Save** is chosen from the menu:

If **Save** is chosen, choose the location to save to. The file to be downloaded is the installer for the post so the location is not critical, but in order to find it easily the Desktop is a good choice for a temporary location. Once the file has been saved, double-click on it and the installer will run.

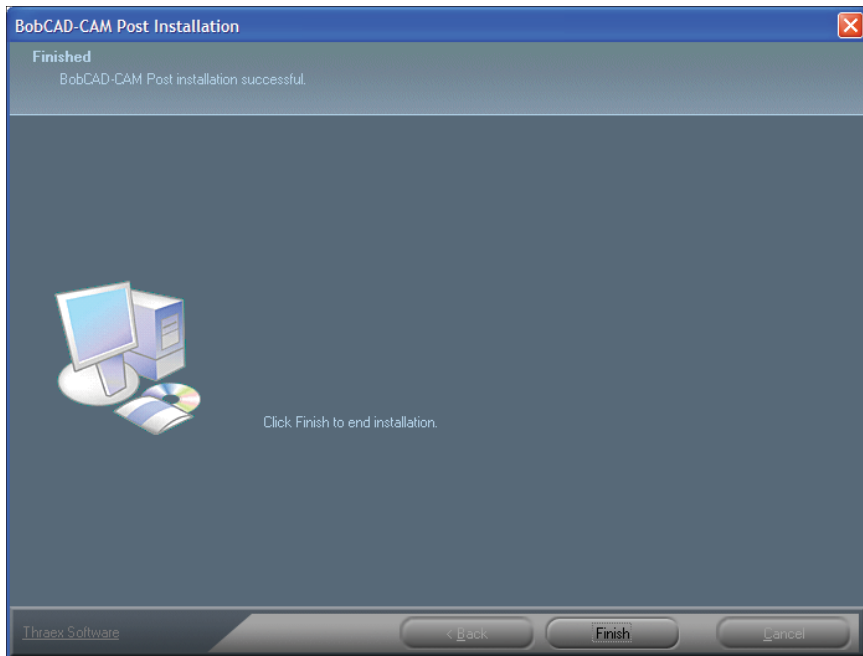
When the post installer begins, it will display dialog boxes to guide the user through the installation. The post processors on the CD and those on the Web are the same; just that the ones on the Web are guaranteed to be the most up-to-date.



Click **Next** on the first box that will appear.



In the second box that will appear, read the note in the textbox, then click on **Install**.



When the post processor has been successfully installed, the final box will appear. Click **Finish** to quit the installer.

Step 3. Repeat **Step 2** for any additional post processors that are required. When finished, close all of the boxes that the install CD created and put the CD away. All of the required post processors should be installed and ready to use.