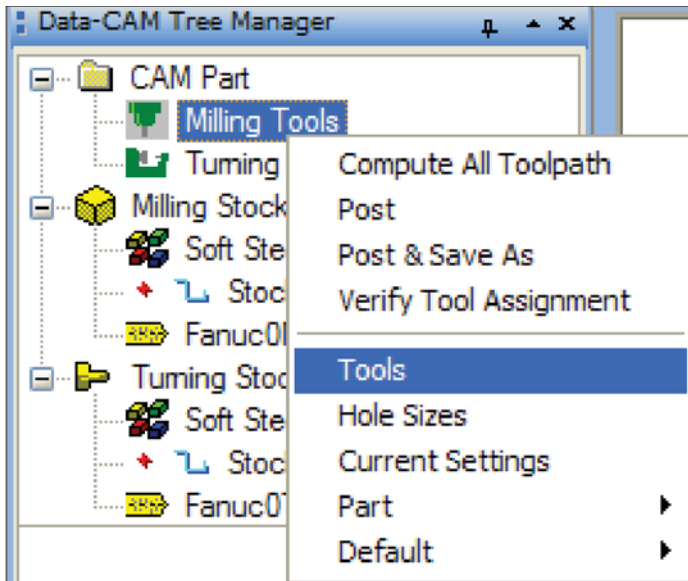


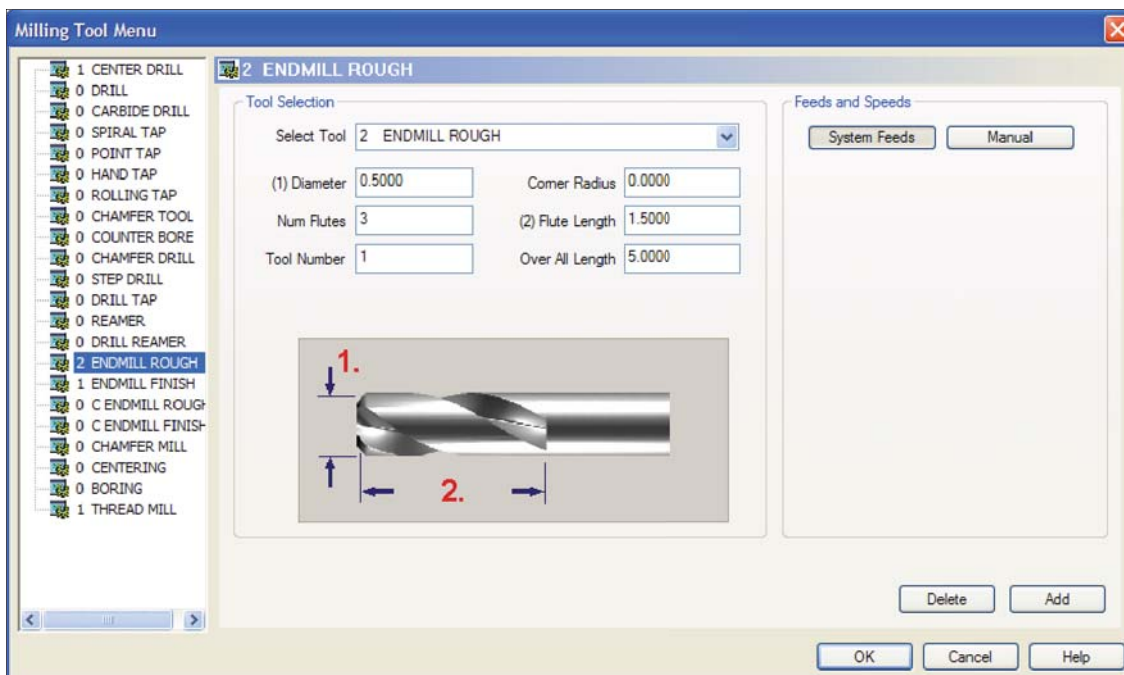
FAQ #10: Can I change the number of flutes?

Yes, and it is very easy to do. There is only one step involved.

Right-click on **Milling Tools** under **CAM Part** in the CAM tree. Choose **Tools** from the list.



Find the tool that needs to be changed in the list of tool types in the left. Change the **Num Flutes** parameter to what the tool actually has and then click **OK**.



Post the program again and all of the speeds and feeds will be updated for that tool.