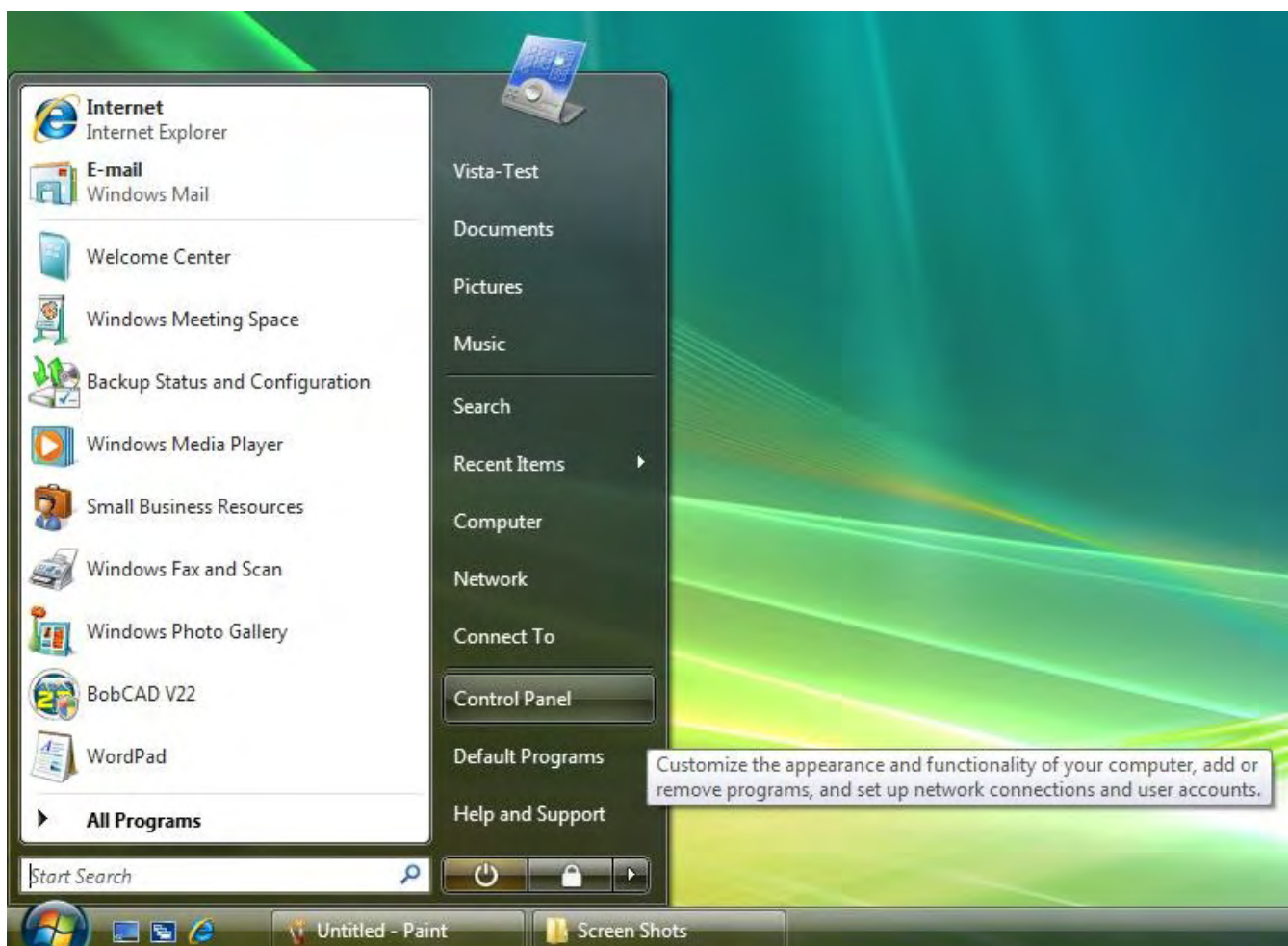


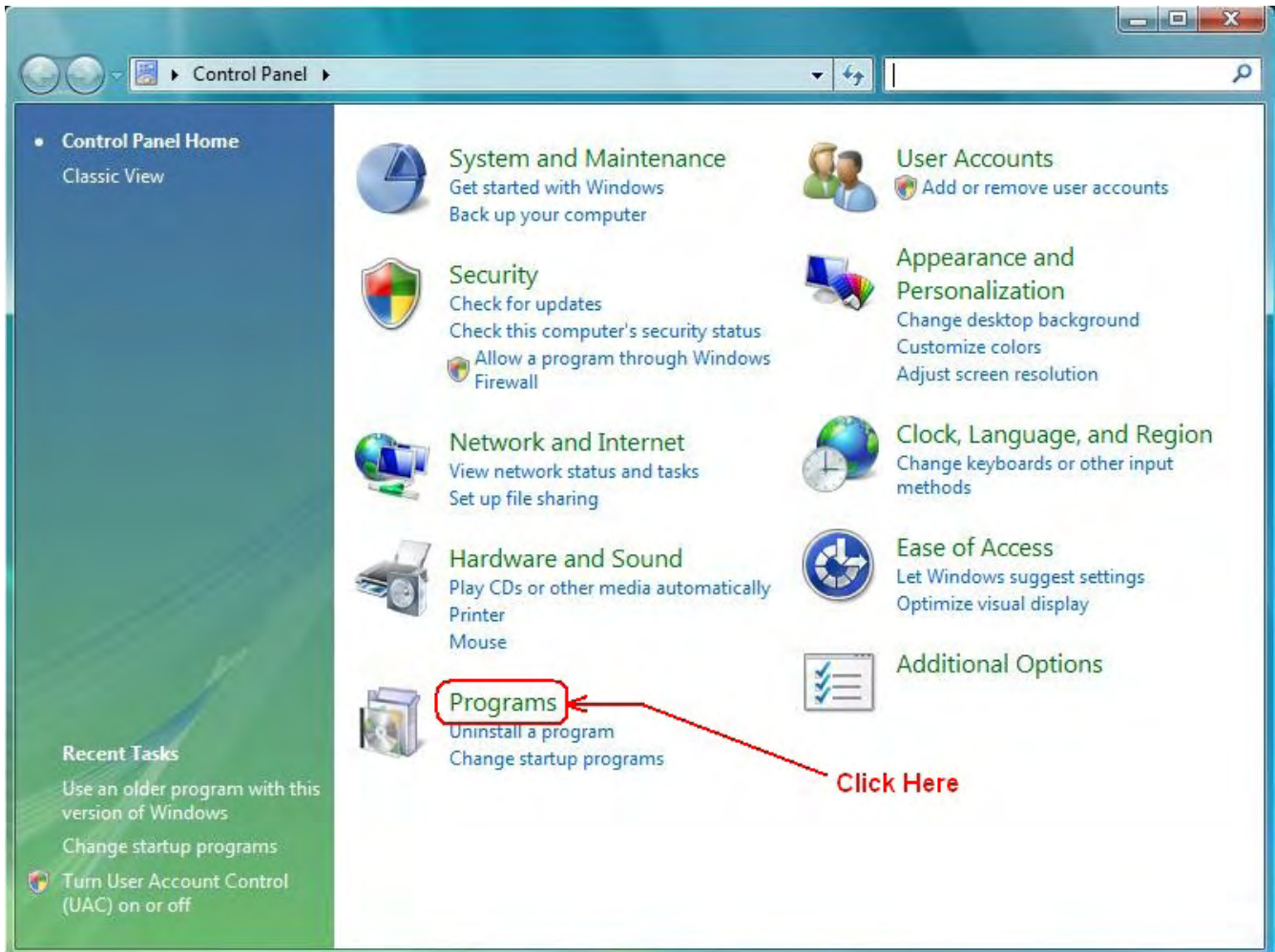


Running BobCAD-CAM Applications with Microsoft Windows Vista

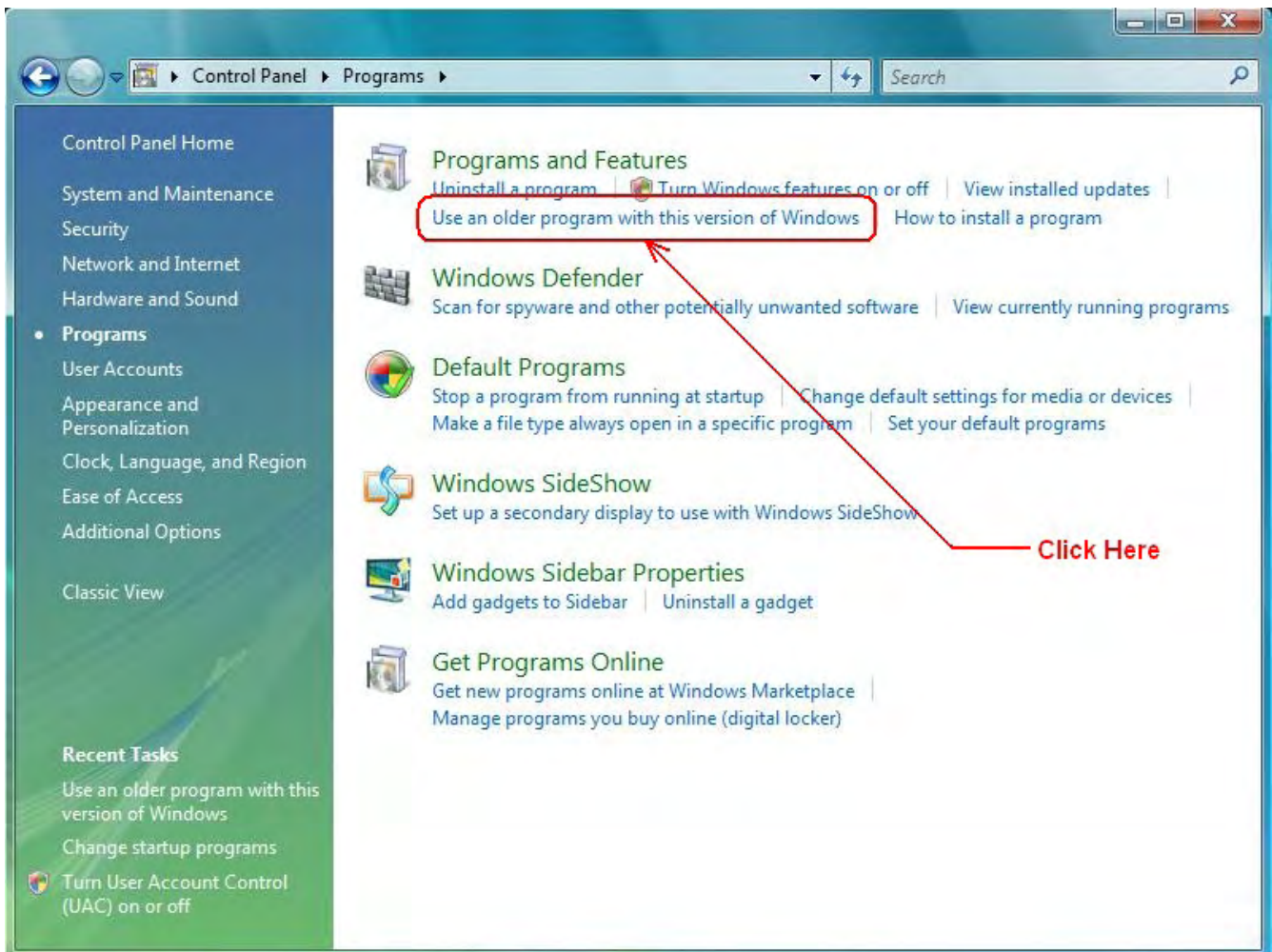
Step 1 Click the **Taskbar Start** button, located in the lower left-hand corner of the computer **Desktop**. In the **Start menu** click on **Control Panel**.



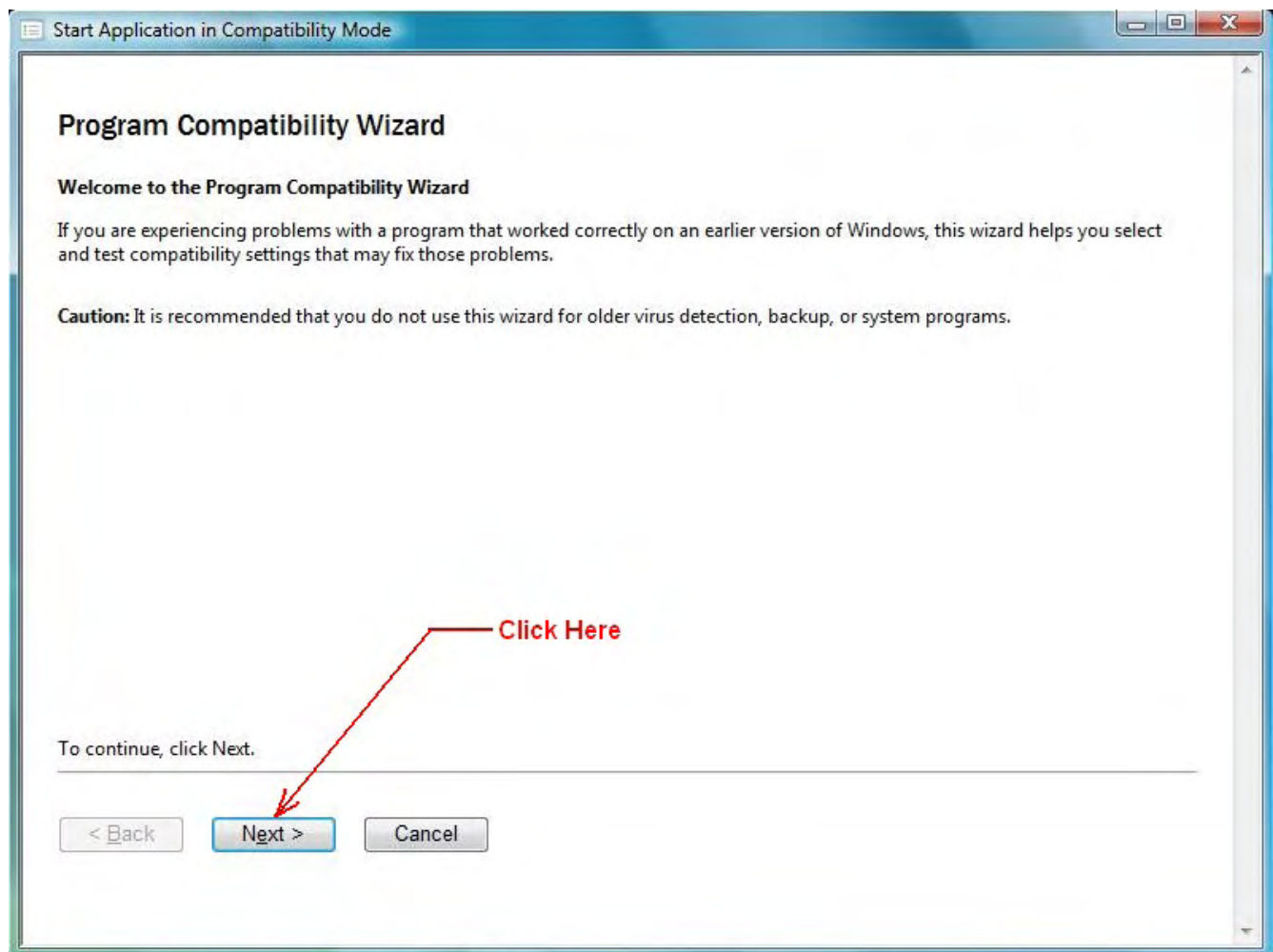
Step 2 In the **Control Panel** click on the **Programs** menu. **Note:** If in **Classic View**, please select **Control Panel Home** to correspond images within these instructions.



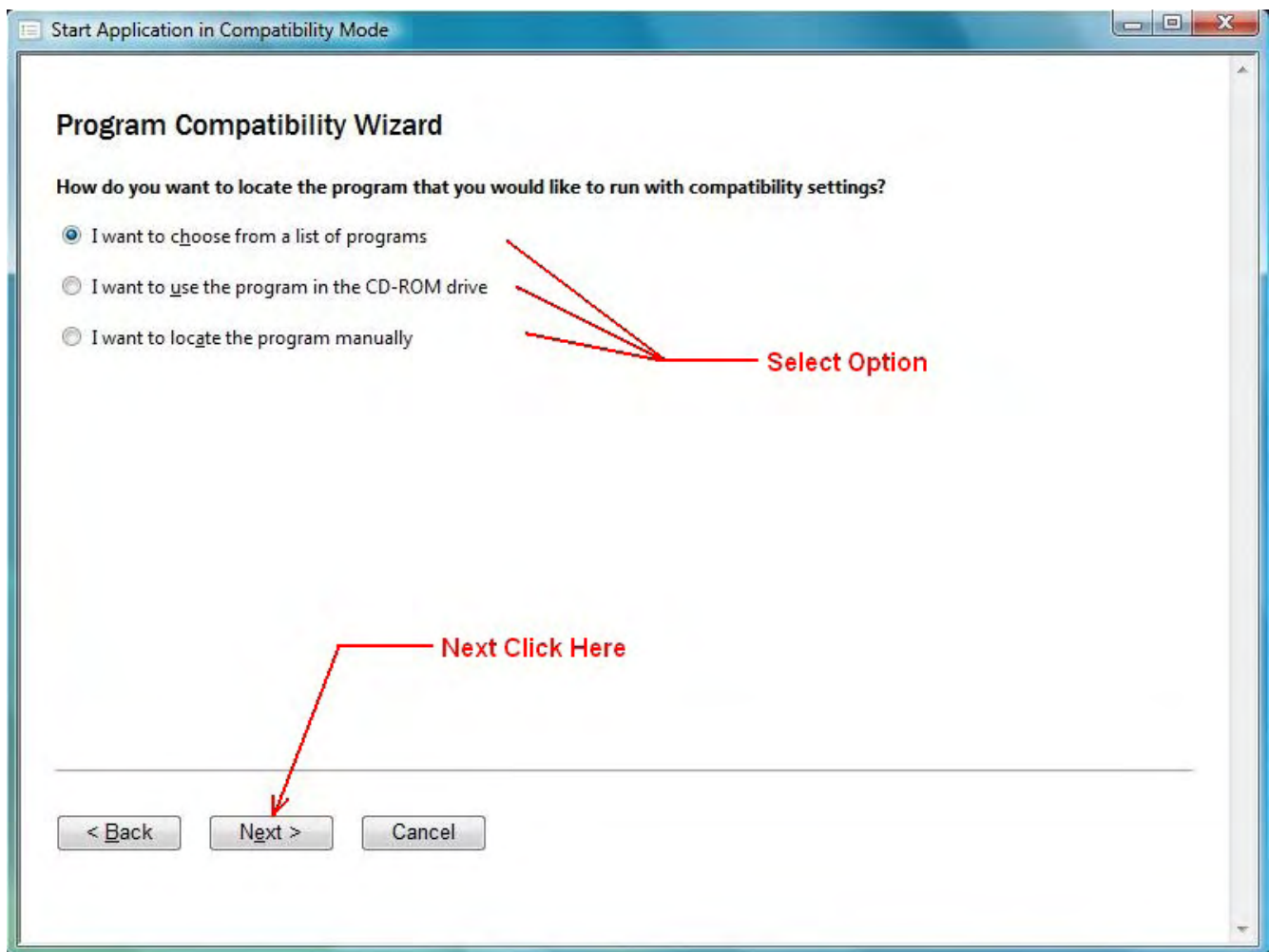
Step 3 In the **Programs** menu click on **Use an older program with this version of Windows**, located underneath **Programs and Features** heading.



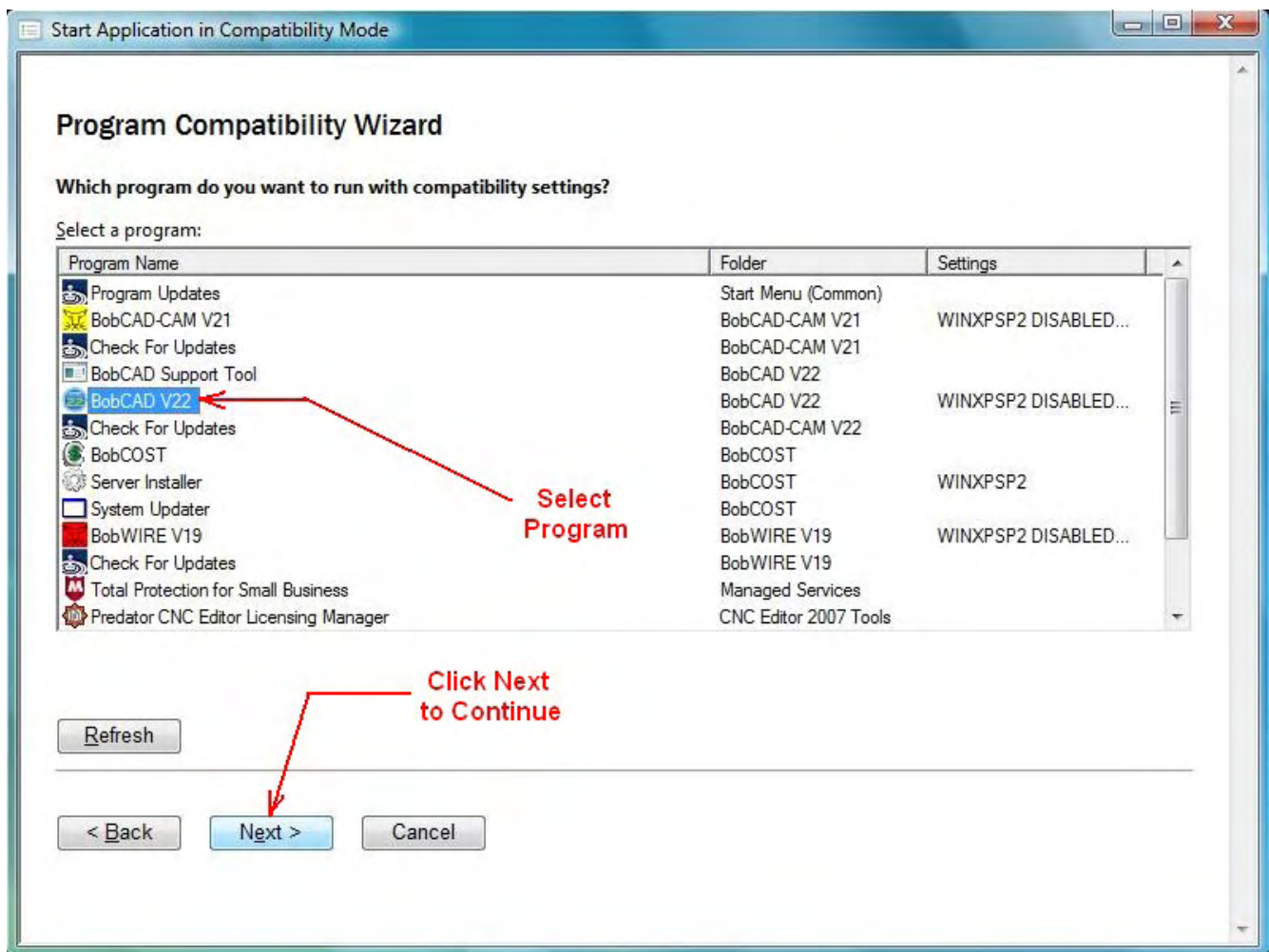
Step 4 In the **Start Application in Compatibility Mode** window click **Next** to continue. This will launch the **Program Compatibility Wizard**.



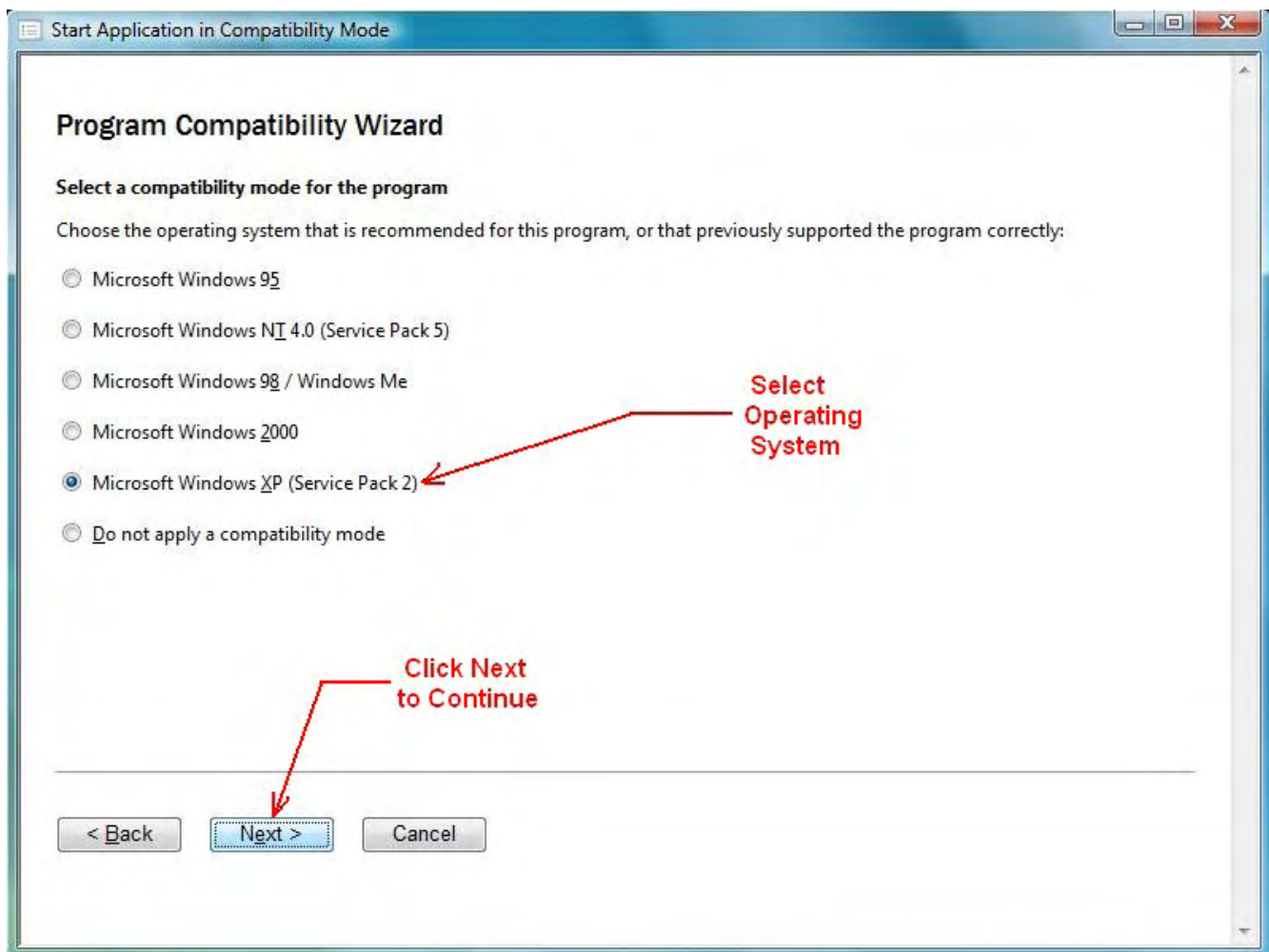
Step 5 Select the button, for the option, to locate the desired application to run in **Compatibility Mode**. We recommended selecting, **I want to choose from a list of programs**. Click **Next** to continue.



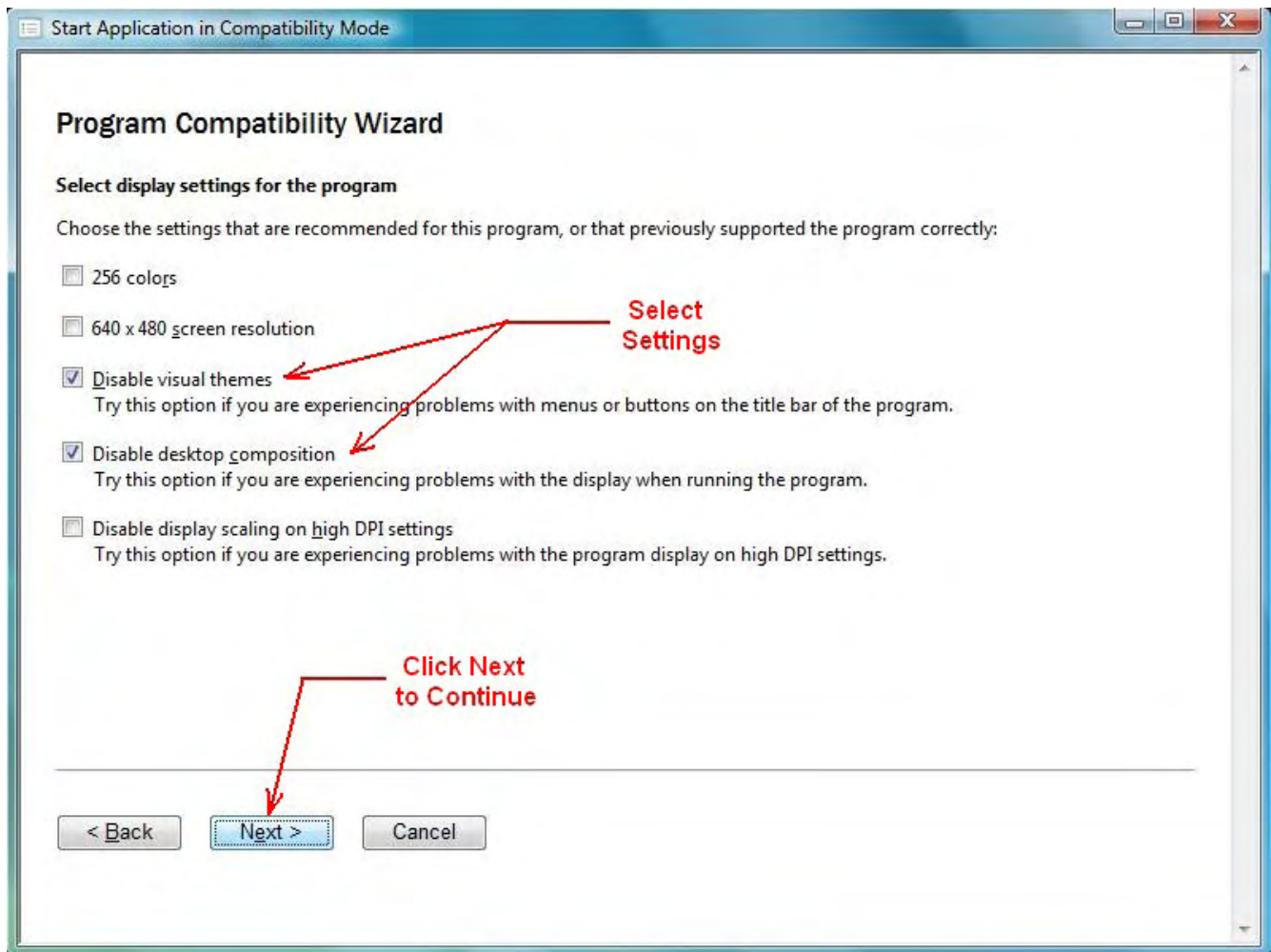
Step 6 Click on the desired **Program Name** from the list of applications. Click **Next** to continue.



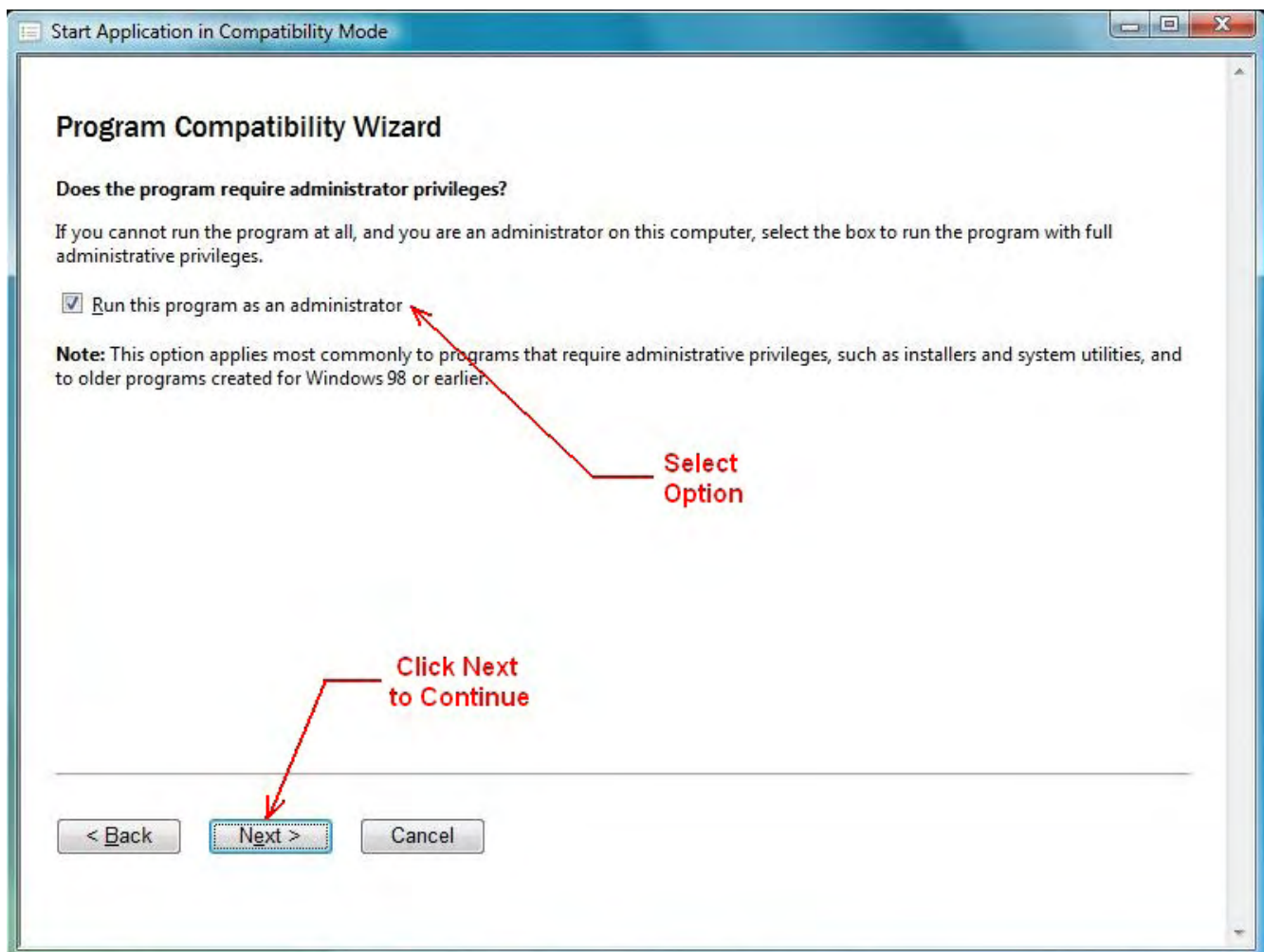
Step 7 Choose the Operating System that is recommended for this program. We recommended **Microsoft Windows XP (Service Pack 2)** for all supported **BobCAD-CAM** applications and associated modules. Click **Next** to continue.



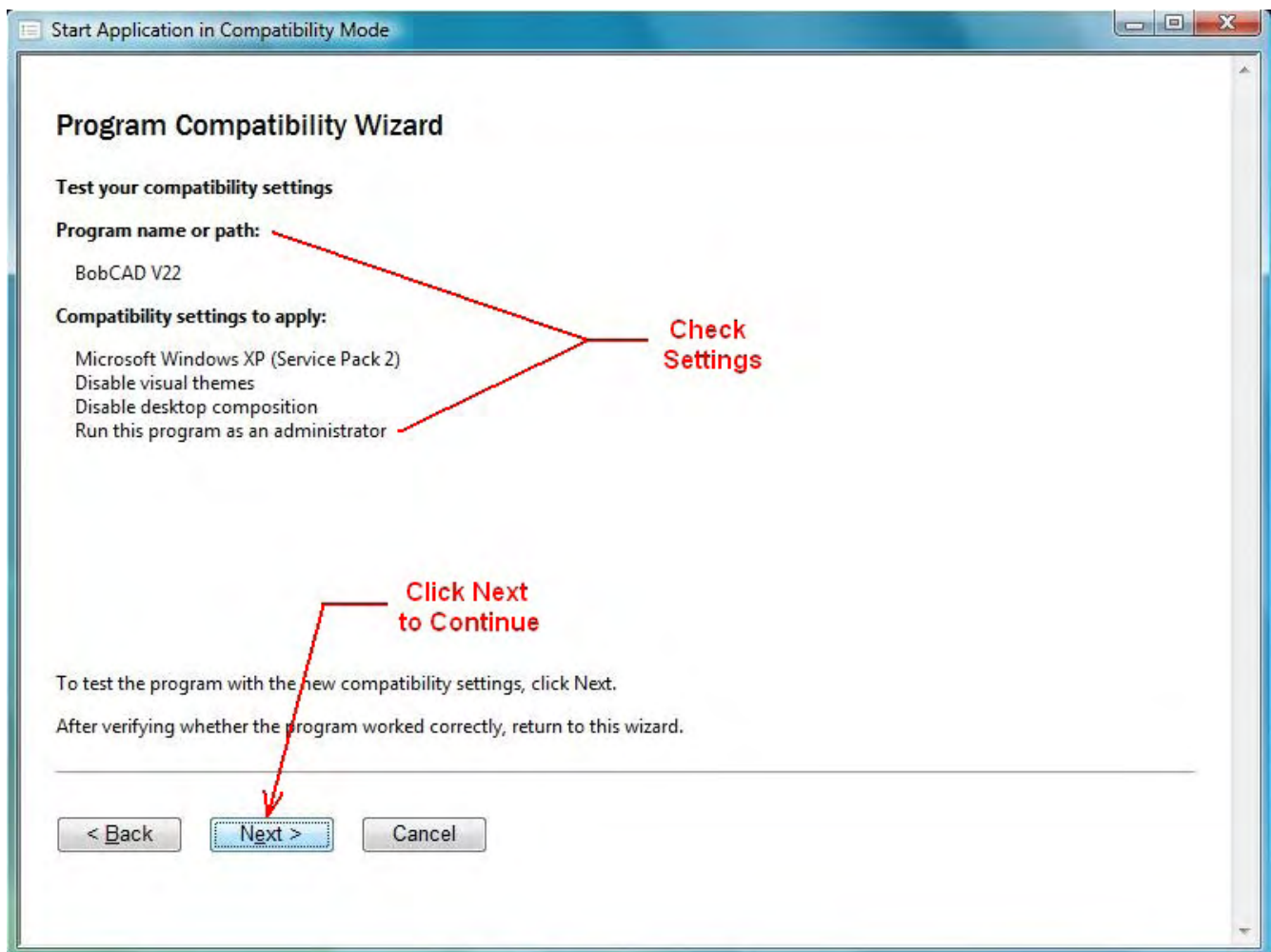
Step 8 Choose the settings that are recommended for this program. We recommend selecting **Disable visual themes** and **Disable desktop composition**. Click **Next** to continue.



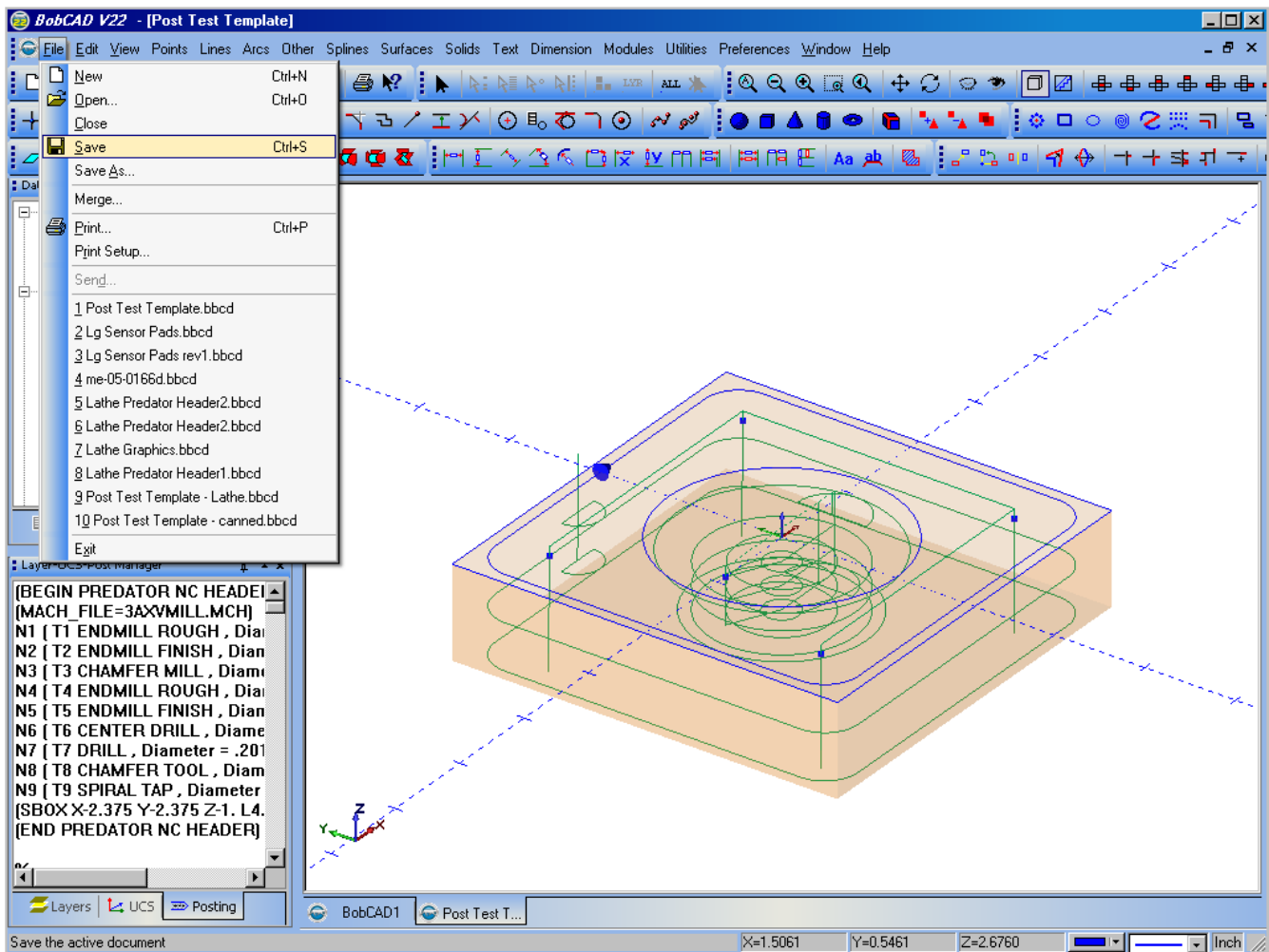
Step 9 Select **Run this program as an administrator**. Click **Next** to continue.



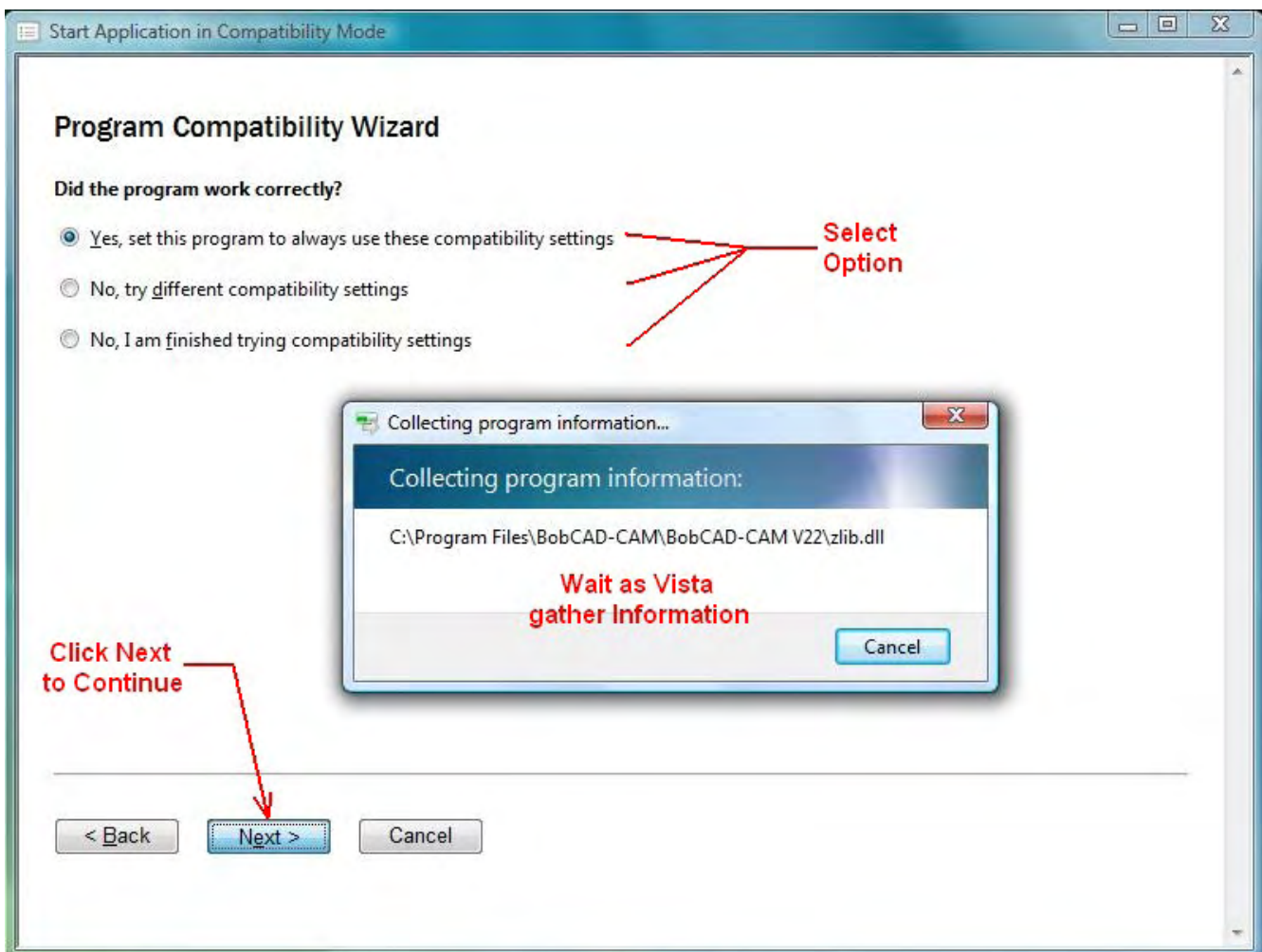
Step 10 Verify that the desired settings have been selected such that Vista can **Test your compatibility settings**. Click **Back** if you need to re-select options. Click **Next** to continue. This will automatically launch the selected application. Upon closing the program you will return to the wizard.



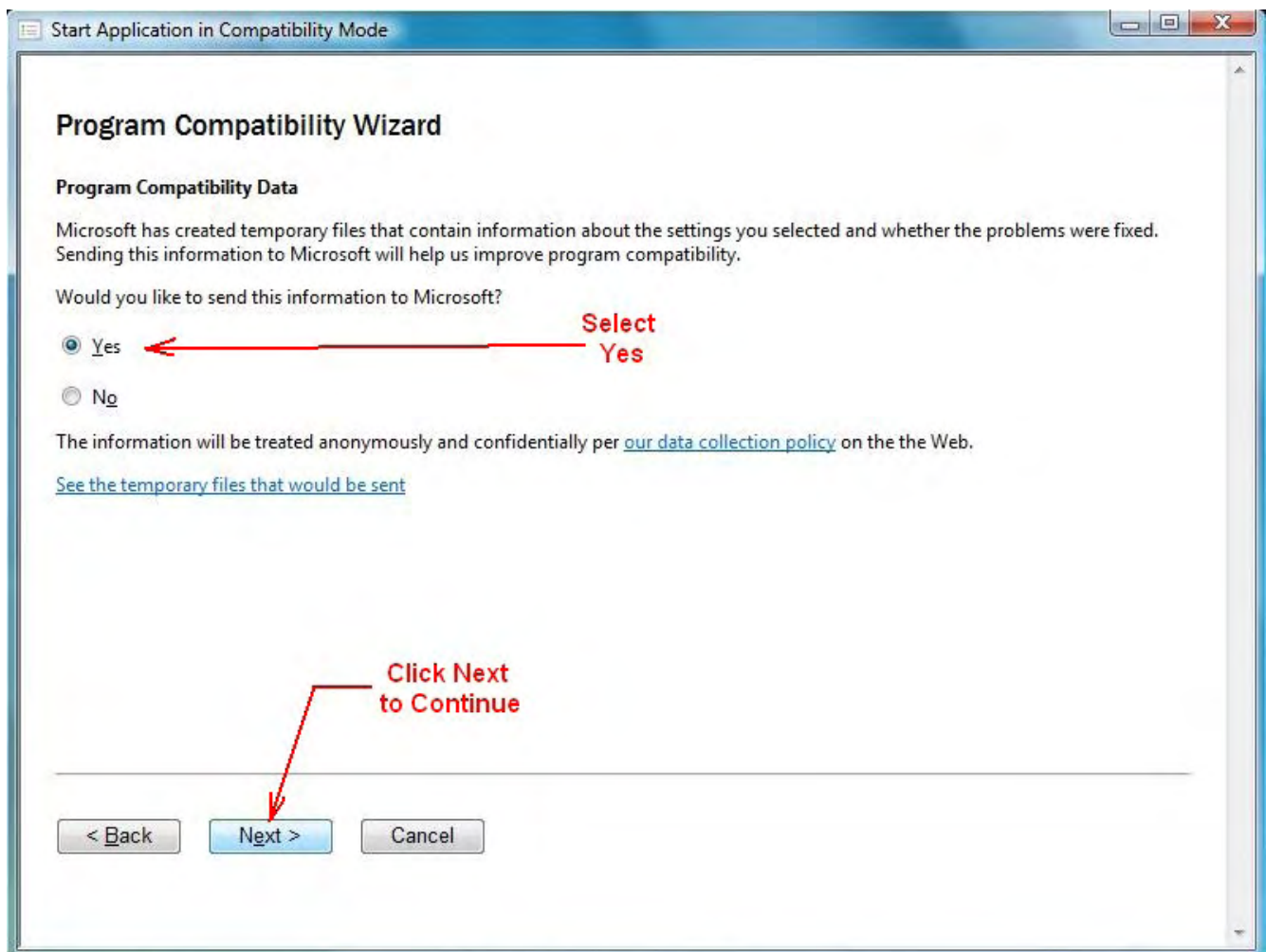
Step 11 Test the functionality of the application and **Save** a file to any location on the computer, and close the program. You will then return to the **Program Compatibility Wizard** to complete changes.



Step 12 Did the program work correctly? If **No**, try different compatibility settings. If **Yes**, set this program to always use these compatibility settings. Click **Next** to continue. **Vista** will gather information regarding the program.



Step 13 You will be asked, **Would you like to send this information to Microsoft?** Select **Yes**, click **Next** to continue.



Step 14 Click **Finish** for **Completing the Program Compatibility Wizard**. Repeat this process for all **BobCAD-CAM** applications and modules. **Note:** Follow these steps to run any application in **Compatibility Mode**.

